

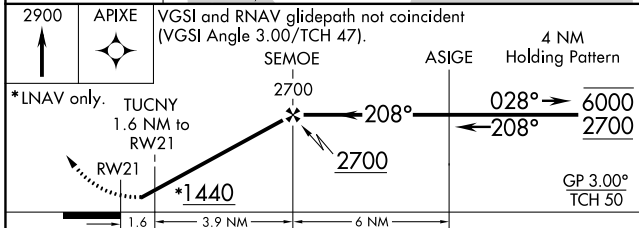
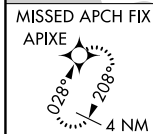
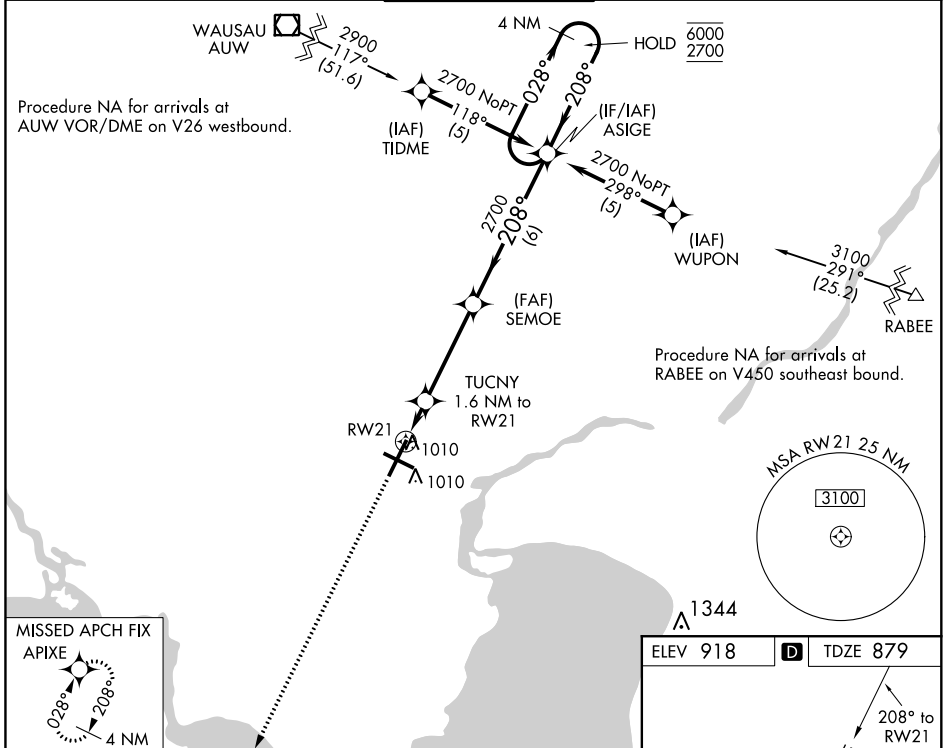
WAAS CH <b>93517</b> <b>W21A</b>	APP CRS <b>208°</b>	Rwy Idg TDZE Apt Elev	<b>8002</b> <b>879</b> <b>918</b>
--	------------------------	-----------------------------	---

# RNAV (GPS) RWY 21

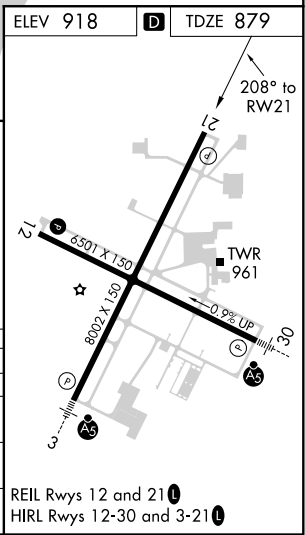
APPLETON INTL (ATW)

RNP APCH.			MISSED APPROACH: Climb to 2900 direct APIXE and hold.
<p><b>▼</b> Rwy 21 helicopter visibility reduction below 1 SM NA. For uncompensated Baro-VNAV systems, LNAV/VNAV NA below -16°C or above 47°C.</p>			

ATIS <b>127.15</b>	GREEN BAY APP CON* <b>126.3 338.2</b>	APPLETON TOWER* <b>119.6(CTAF) 0</b>	GND CON <b>121.7</b>	UNICOM <b>122.95</b>
-----------------------	--	---	-------------------------	-------------------------



CATEGORY	A	B	C	D
LPV DA		1129-1	250 (300-1)	
LNAV/VNAV DA		1261-1¼	382 (400-1)	
LNAV MDA	1280-1	401 (400-1)	1280-1¼	401 (400-1¼)
CIRCLING	1340-1 422 (500-1)	1380-1 462 (500-1)	1400-1½ 482 (500-1½)	1480-2 562 (600-2)



EC-3, 25 FEB 2021 to 25 MAR 2021

EC-3, 25 FEB 2021 to 25 MAR 2021