

WAAS CH 82305 W17A	APP CRS 174°	Rwy Idg TDZE Apt Elev	6893 1740 1749
--	------------------------	-----------------------------	---

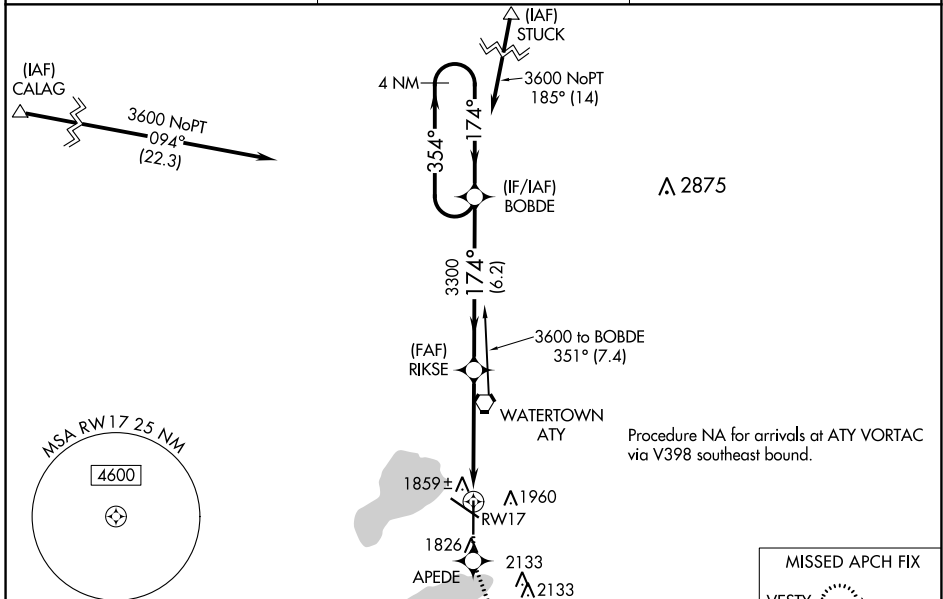
RNAV (GPS) RWY 17

WATERTOWN RGNL (ATY)

⚠ Baro-VNAV NA when using Brookings altimeter setting. DME/DME RNP-0.3 NA.
⚠ For uncompensated Baro-VNAV systems, LNAV/VNAV NA below -18°C (0°F) or above 45°C (113°F). VDP NA when using Brookings altimeter setting. When local altimeter setting not received, use Brookings altimeter setting and increase all DAs 105 feet and all MDAs 120 feet; increase Circling Cat C and D visibility ¼ SM.

MISSED APPROACH: Climb to 4000 direct APEDE and via 154° track to VESTY and hold.

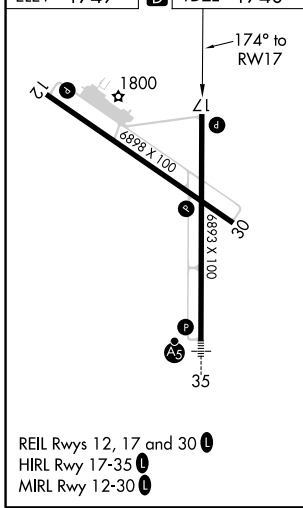
ASOS 126.625	MINNEAPOLIS CENTER 128.5 306.2	UNICOM 123.05 (CTAF) 📻
------------------------	--	---



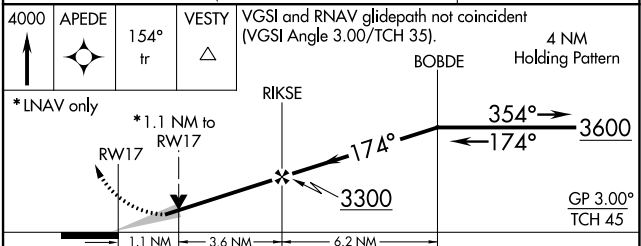
NC-1, 25 FEB 2021 to 25 MAR 2021

NC-1, 25 FEB 2021 to 25 MAR 2021

ELEV 1749	D	TDZE 1740
-----------	----------	-----------



4000	APEDE	154° tr	VESTY	VGSI and RNAV glidepath not coincident (VGSI Angle 3.00/TCH 35).	4 NM Holding Pattern
------	-------	---------	-------	--	----------------------



CATEGORY	A	B	C	D
LPV DA	2054-1		314 (400-1)	
LNAV/VNAV DA	2129-1¼		389 (400-1¼)	
LNAV MDA	2120-1 380 (400-1)		2120-1¼ 380 (400-1¼)	
C CIRCLING	2260-1 511 (600-1)		2500-2¼ 751 (800-2¼)	