

WAAS CH 50305 W30A	APP CRS 299°	Rwy Idg TDZE Apt Elev	6898 1736 1749
--	------------------------	-----------------------------	---

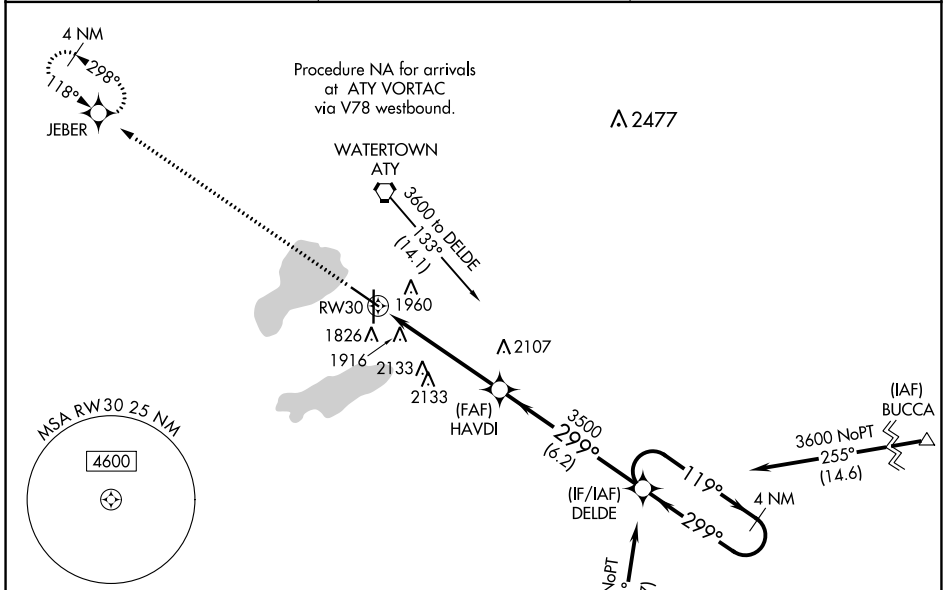
RNAV (GPS) RWY 30

WATERTOWN RGNL (ATY)

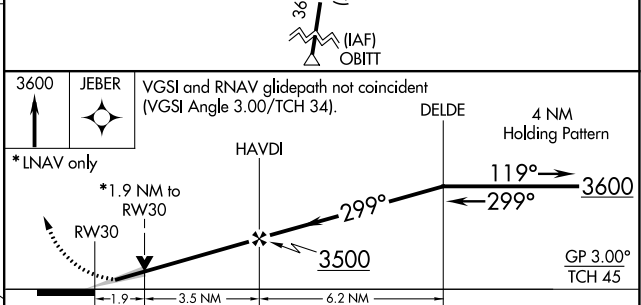
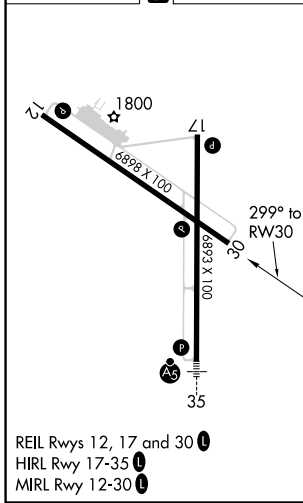
⚠ For uncompensated Baro-VNAV systems, LNAV/VNAV NA below -18°C (0°F) or above 45°C (113°F). DME/DME RNP-0.3 NA. When local altimeter setting not received, use Brookings altimeter setting and increase all DAs 105 feet and all MDAs 120 feet, increase LPV and LNAV/VNAV all Cats visibility ¼ SM, LNAV Cat B visibility ¼ SM, and Cat C/D visibility ½ SM, increase Circling Cats B/C/D visibility ¼ SM. VDP NA when using Brookings altimeter setting. Baro-VNAV NA when using Brookings altimeter setting.

MISSED APPROACH: Climb to 3600 direct JEBER and hold.

ASOS 126.625	MINNEAPOLIS CENTER 128.5 306.2	UNICOM 123.05 (CTAF) 0
------------------------	--	----------------------------------



ELEV 1749	D	TDZE 1736
-----------	----------	-----------



CATEGORY	A	B	C	D
LPV DA	1990-1 254 (300-1)			
LNAV/VNAV DA	2208-1¾ 472 (500-1¾)			
LNAV MDA	2360-1 624 (700-1)	2360-1¾ 624 (700-1¾)	2360-2 624 (700-2)	2360-2 624 (700-2)
C CIRCLING	2360-1 611 (700-1)	2500-2¼ 751 (800-2¼)	2500-2½ 751 (800-2½)	2500-2½ 751 (800-2½)

NC-1, 25 FEB 2021 to 25 MAR 2021

NC-1, 25 FEB 2021 to 25 MAR 2021