

LOC I-AUM 110.55	APP CRS 351°	Rwy Idg TDZE Apt Elev	5800 1231 1234
----------------------------	------------------------	-----------------------------	---

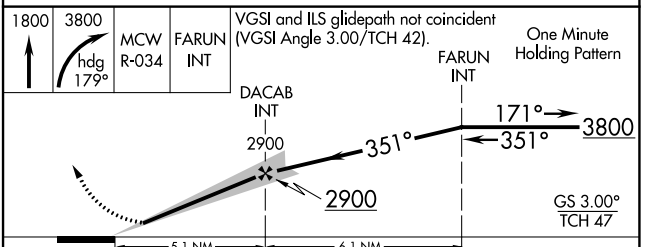
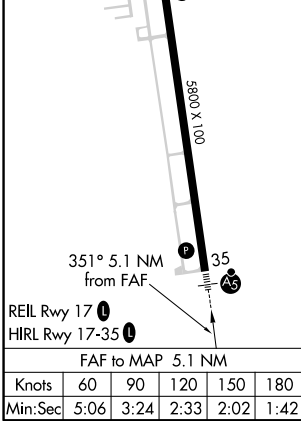
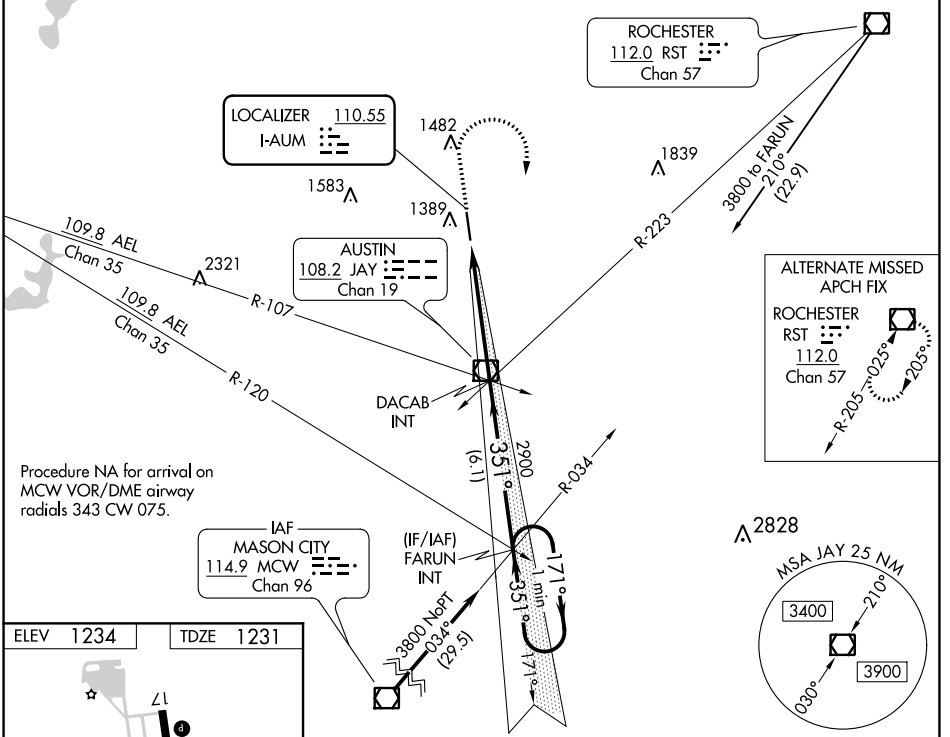
ILS or LOC RWY 35

AUSTIN MUNI (AUM)

NA When local altimeter setting not received, use Albert Lea altimeter setting and increase all DA 48 feet and all MDA 60 feet; increase Circling Cat C/D visibility ¼ SM. For inoperative MALS/R, increase S-LOC 35 Cats C and D visibility to 1 ½ mile.

MALS/R MISSED APPROACH: Climb to 1800 then climbing right turn to 3800 on heading 179° and MCW VOR/DME R-034 to FARUN INT and hold.

AWOS-3 119.025	ROCHESTER APP CON* 119.8 251.125	UNICOM 122.7 (CTAF)
--------------------------	--	-------------------------------



CATEGORY	A	B	C	D
S-ILS 35	1431-½		200 (200-½)	
S-LOC 35	1700-½	469 (500-½)	1700-1	469 (500-1)
C CIRCLING	1740-1	506 (600-1)	1800-1½	1880-2
			566 (600-1½)	646 (700-2)

NC-1, 25 FEB 2021 to 25 MAR 2021

NC-1, 25 FEB 2021 to 25 MAR 2021