

VOR/DME JAY 108.2 Chan 19	APP CRS 173°	Rwy Idg TDZE Apt Elev	5800 1234 1234
---	------------------------	-----------------------------	---

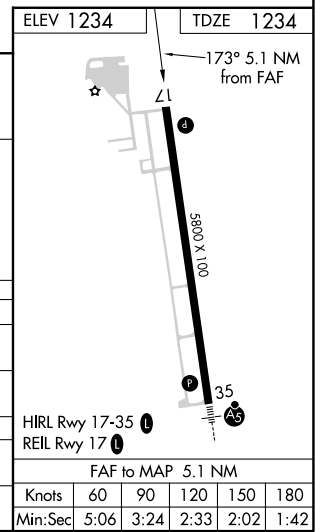
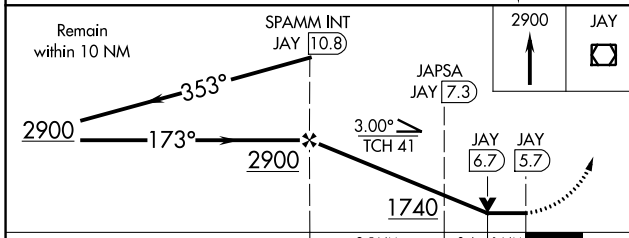
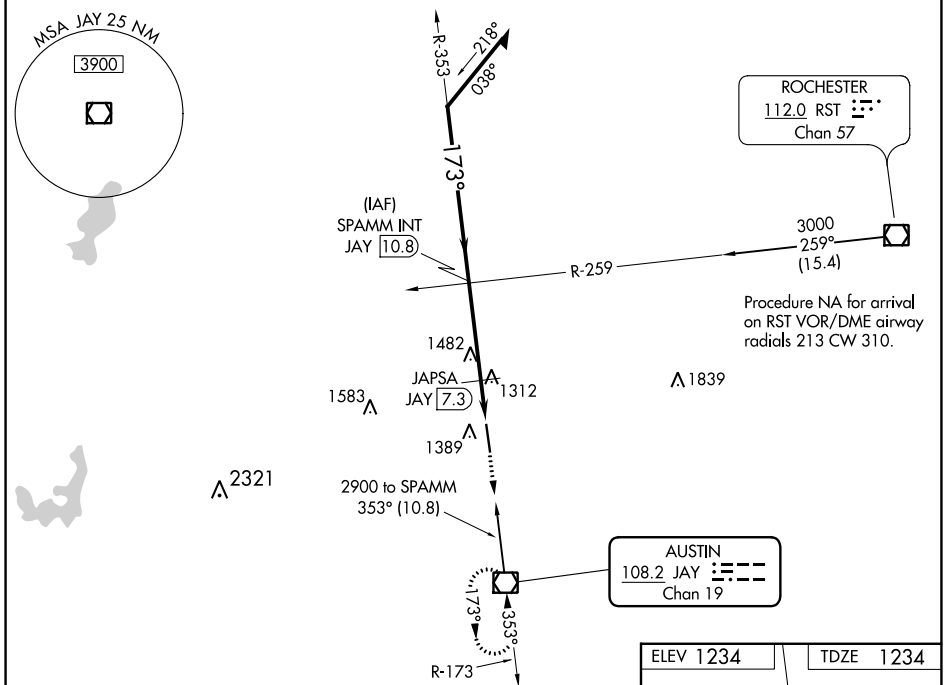
VOR RWY 17

AUSTIN MUNI (AUM)

NA Helicopter visibility reduction below 3/4 SM NA.

MISSED APPROACH: Climb to 2900 direct JAY VOR/DME and hold.

AWOS-3 119.025	ROCHESTER APP CON * 119.8 251.125	UNICOM 122.7 (CTAF)
--------------------------	---	-------------------------------



CATEGORY	A	B	C	D
S-17	1740-1	506 (600-1)	1740-1 3/8	506 (600-1 3/8)
C CIRCLING	1740-1	506 (600-1)	1800-1 1/2	1880-2
JAPSA DME FIX MINIMUMS				
S-17	1600-1 366 (400-1)		1800-1 1/2	1880-2
C CIRCLING	1700-1	466 (500-1)	566 (600-1 1/2)	646 (700-2)

NC-1, 25 FEB 2021 to 25 MAR 2021

NC-1, 25 FEB 2021 to 25 MAR 2021