

LOC/DME I-VNK <b>110.5</b> Chan 42	APP CRS <b>175°</b>	Rwy Idg TDZE Apt Elev	<b>9000</b> <b>492</b> <b>542</b>
--	------------------------	-----------------------------	---

# ILS RWY 17L (CAT II & III)

## AUSTIN-BERGSTROM INTL (AUS)

RNAV 1- GPS or RADAR required for procedure entry.  
DME required.  
From HOUKM, JEDYE: RNAV 1- GPS required.

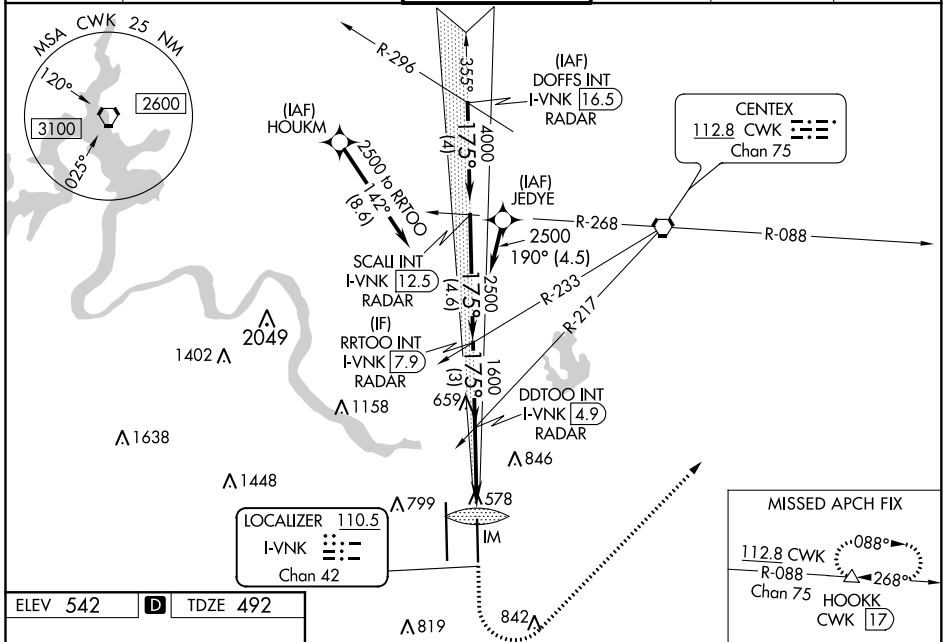
ALSF-2



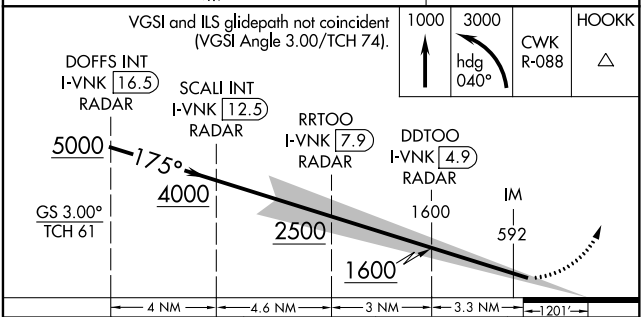
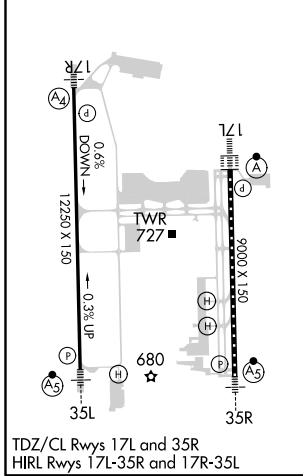
MISSED APPROACH: Climb to 1000, then climbing left turn to 3000 heading 040° and CWK VORTAC R-088 to HOOKK/CWK 17 DME and hold.

Simultaneous approach authorized.

D-ATIS <b>124.4</b>	AUSTIN APP CON <b>127.225 317.65</b> (EAST) <b>120.875 270.25</b> (SOUTH) <b>119.0 370.85</b> (WEST)	AUSTIN TOWER <b>121.0 281.5</b>	GND CON <b>121.9 348.6</b>	CLNC DEL <b>125.5 263.0</b>	CPDLC
------------------------	---	------------------------------------	-------------------------------	--------------------------------	-------



ELEV 542	<b>D</b>	TDZE 492
----------	----------	----------



CATEGORY	A	B	C	D
S-ILS 17L	CAT II RA 105/12 100 DA 592			
S-ILS 17L	CAT III RVR 06			

### CATEGORY II & III ILS - SPECIAL AIRCREW & AIRCRAFT CERTIFICATION REQUIRED

SC-3, 25 FEB 2021 to 25 MAR 2021

SC-3, 25 FEB 2021 to 25 MAR 2021