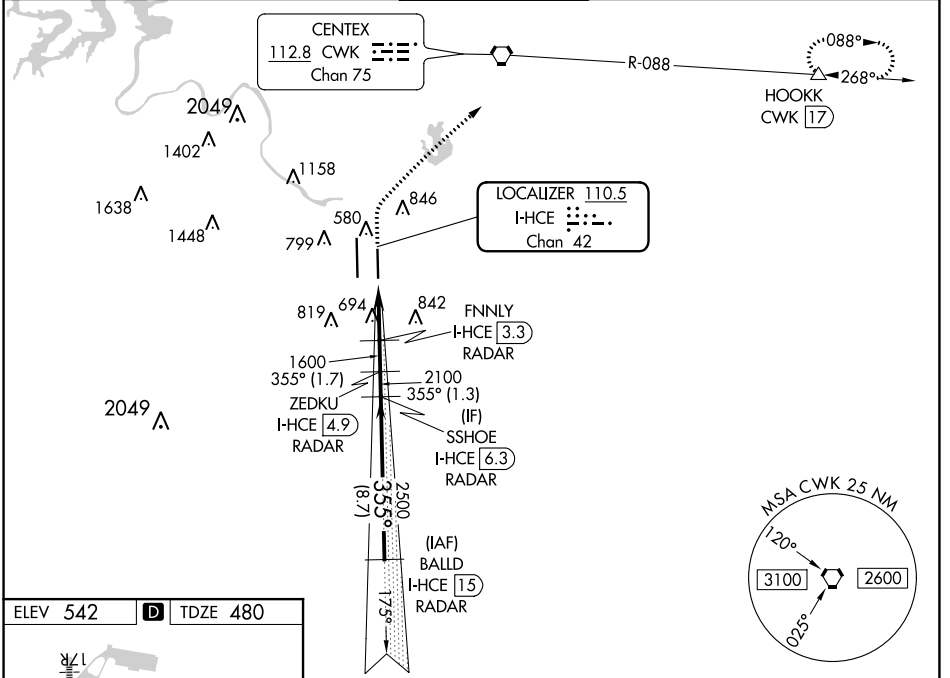


LOC/DME I-HCE 110.5 Chan 42	APP CRS 355°	Rwy Idg 9000 TDZE 480 Apt Elev 542
---	------------------------	---

ILS RWY 35R (SA CAT I & II)

AUSTIN-BERGSTROM INTL (AUS)

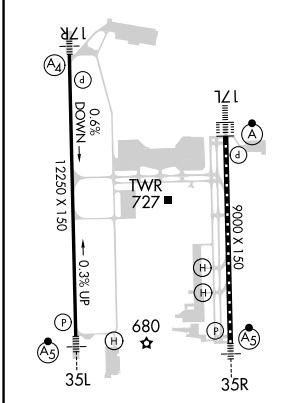
DME required. RADAR required for procedure entry.		MALSR	MISSED APPROACH: Climb to 1000 then climbing right turn to 3000 on heading 030° and CWK VORTAC R-088 to HOOKK/CWK 17 DME and hold.		
<p>Simultaneous approach authorized. SA CAT I: Requires specific OPSPEC, MSPEC or LOA approval and use of HUD to DH. SA CAT II: Reduced lighting: Requires specific OPSPEC, MSPEC or LOA approval and use of AUTOLAND or HUD to touchdown.</p>	<p>AUSTIN APP CON 127.225 317.65 (EAST) 120.875 270.25 (SOUTH) 119.0 370.85 (WEST)</p>	<p>AUSTIN TOWER 121.0 281.5</p>	<p>GND CON 121.9 348.6</p>	<p>CLNC DEL 125.5 263.0</p>	<p>CPDLC</p>



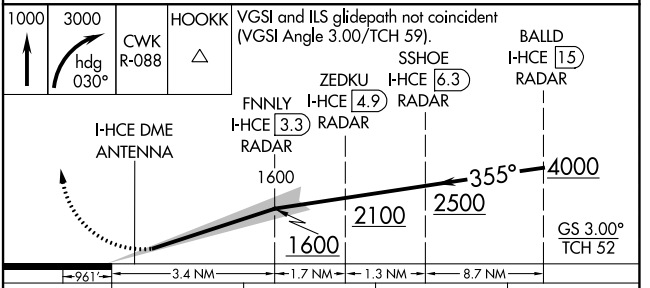
SC-3, 25 FEB 2021 to 25 MAR 2021

SC-3, 25 FEB 2021 to 25 MAR 2021

ELEV 542	D	TDZE 480
-----------------	----------	-----------------



HIRL Rwy 17R-35L and 17L-35R
TDZ/CL Rwy 17L and 35R



CATEGORY	A	B	C	D
S-ILS 35R	SA CAT I RA 185/14 150 DA 630			
S-ILS 35R	SA CAT II RA 110/12 100 DA 580			

SA CATEGORY I & II ILS - SPECIAL AIRCREW & AIRCRAFT CERTIFICATION REQUIRED