

LOC/DME I-GFQ <b>110.95</b> Chan <b>46(Y)</b>	APP CRS <b>175°</b>	Rwy Idg <b>12250</b> TDZE <b>542</b> Apt Elev <b>542</b>
---	------------------------	--

# ILS or LOC RWY 17R

AUSTIN-BERGSTROM INTL (AUS)

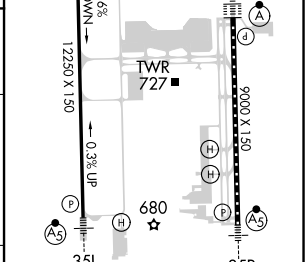
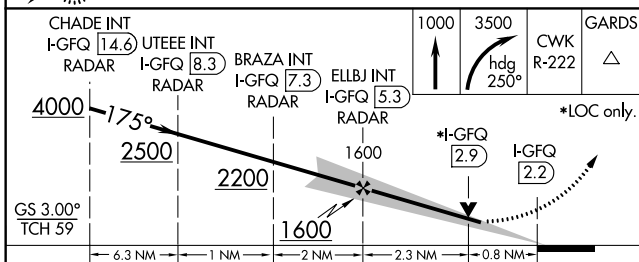
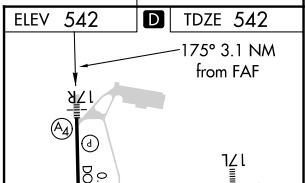
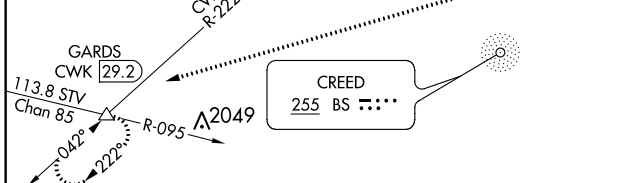
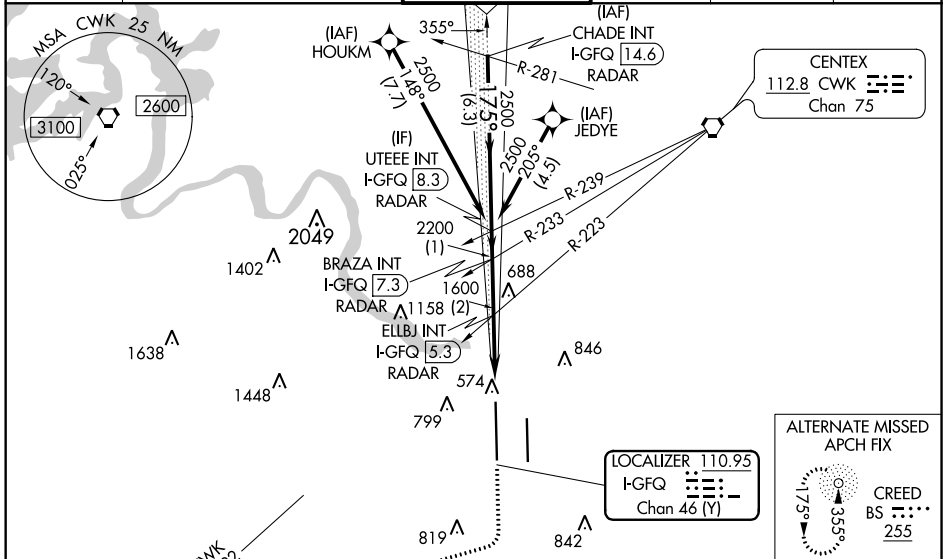
RNAV 1 - GPS or RADAR required for procedure entry.  
From HOUKM, JEDYE: RNAV 1 - GPS required.

Simultaneous approach authorized. For inop ALS, increase S-LOC 17R Cats C/D/E visibility to RVR 4500.

MALS  $\text{A} \text{---} \text{---} \text{---}$

MISSED APPROACH: Climb to 1000 then climbing right turn to 3500 on heading 250° and CWK VORTAC R-222 to GARDS INT/CWK 29.2 DME and hold.

D-ATIS <b>124.4</b>	AUSTIN APP CON <b>127.225 317.65 (EAST)</b> <b>120.875 270.25 (SOUTH)</b> <b>119.0 370.85 (WEST)</b>	AUSTIN TOWER <b>121.0 281.5</b>	GND CON <b>121.9 348.6</b>	CLNC DEL <b>125.5 263.0</b>	CPDLC
------------------------	---	------------------------------------	-------------------------------	--------------------------------	-------



CATEGORY	A	B	C	D	E
S-ILS 17R		742/40	200 (200-¾)		
S-LOC 17R		860/40	318 (400-¾)		

TDZ/CL Rwy 17L and 35R	60	90	120	150	180
HIRL Rwy 17L-35R and 17R-35L	3:06	2:04	1:33	1:14	1:02
FAF to MAP 3.1 NM					

SC-3, 25 FEB 2021 to 25 MAR 2021

SC-3, 25 FEB 2021 to 25 MAR 2021