

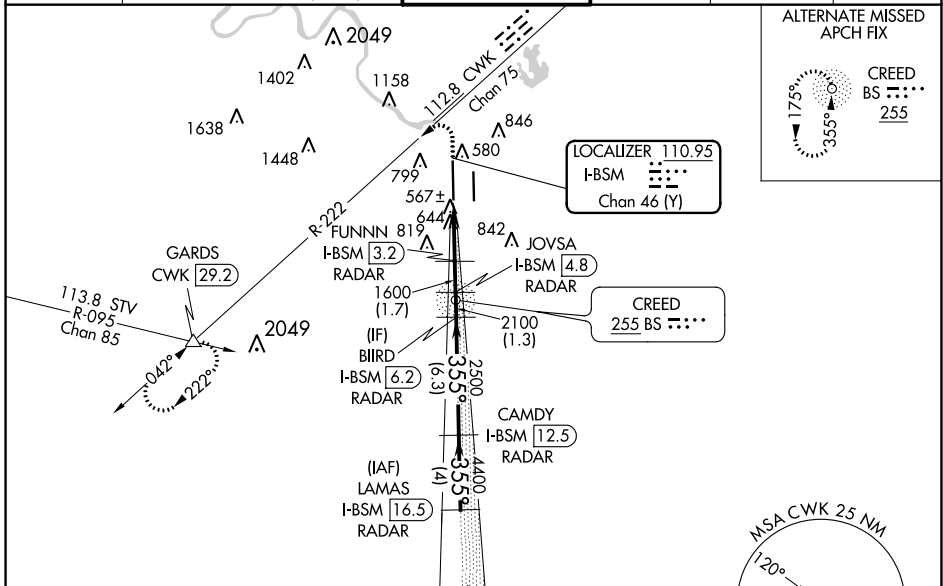
LOC/DME I-BSM 110.95 Chan 46 (Y)	APP CRS 355°	Rwy Idg TDZE 496 Apt Elev 542	12250
--	------------------------	---	--------------

ILS or LOC RWY 35L

AUSTIN-BERGSTROM INTL (AUS)

DME or RADAR required.	MALSR 	MISSED APPROACH: Climb to 1000 then climbing left turn to 3500 on heading 250° and CWK VORTAC R-222 to GARDS INTL/CWK 29.2 DME and hold.
<p>▼ Simultaneous approach authorized. For inop ALS, increase S-ILS 35L Cat E visibility to RVR 4000, S-LOC 35L Cats C/D/E visibility to RVR 6000. Rwy 35L helicopter visibility reduction below 3/4 SM NA.</p> <p>▲ **RVR 1800 authorized with use of FD or AP or HUD to DA.</p>		

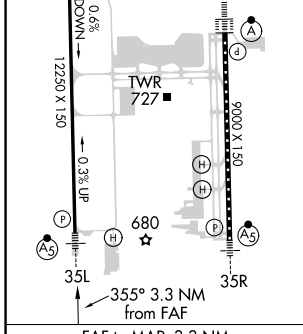
D-ATIS 124.4	AUSTIN APP CON 127.225 317.65 (EAST) 120.875 270.25 (SOUTH) 119.0 370.85 (WEST)	AUSTIN TOWER 121.0 281.5	GND CON 121.9 348.6	CLNC DEL 125.5 263.0	CPDLC
------------------------	---	------------------------------------	-------------------------------	--------------------------------	-------



SC-3, 25 FEB 2021 to 25 MAR 2021

SC-3, 25 FEB 2021 to 25 MAR 2021

ELEV 542	D TDZE 496
HIRL Rwy 17L-35R and 17R-35L TDZ/CL Rwy 17L and 35R	



1000	3500	CWK R-222	GARDS	VGSI and ILS glidepath not coincident (VGSI Angle 3.00/TCH 60).	LAMAS
hdg 250°			JOVSA I-BSM 4.8	CAMDY I-BSM 12.5	LAMAS I-BSM 16.5
*LOC only. I-BSM DME ANTENNA I-BSM 0.2					
FUNNN I-BSM 3.2					
BIIRD I-BSM 6.2					
355° 5000					
1600 2100 2500 4400					
GS 3.00° TCH 54					
-1.1 NM -2.2 -1.7 -1.3 NM -6.3 NM -4 NM					

FAF to MAP 3.3 NM					
Knots	60	90	120	150	180
Min:Sec	3:18	2:12	1:39	1:19	1:06

CATEGORY	A	B	C	D	E
S-ILS 35L**	696/24 200 (200-1/2)				
S-LOC 35L	900/24	404 (400-1/2)	900/40 404 (400-3/4)		