


# RNAV (RNP) Z RWY 17L

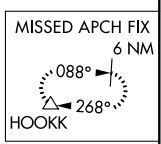
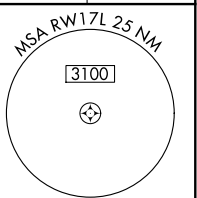
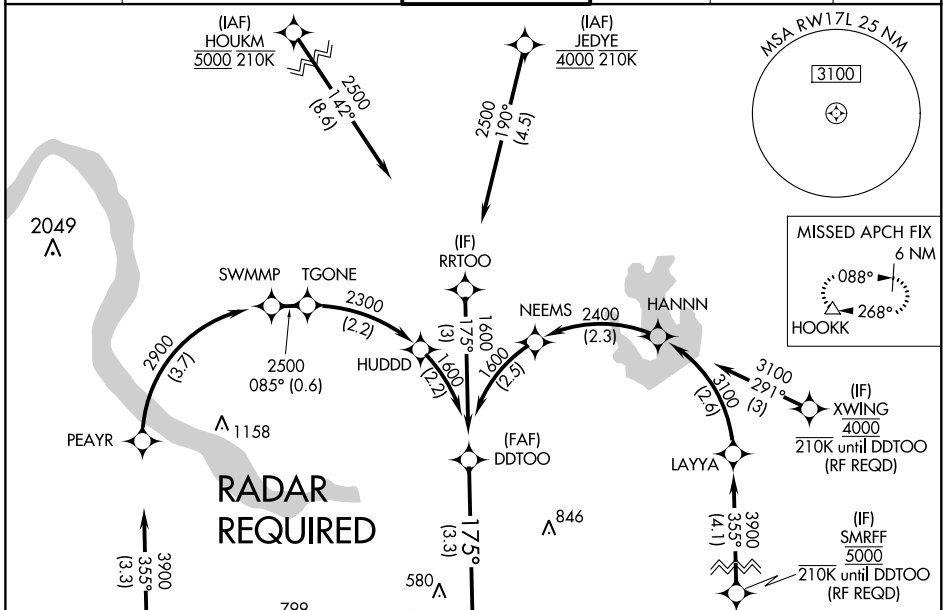
AUSTIN-BERGSTROM INTL (AUS)

APP CRS	Rwy Idg	<b>9000</b>
<b>175°</b>	TDZE	<b>492</b>
	Apt Elev	<b>542</b>

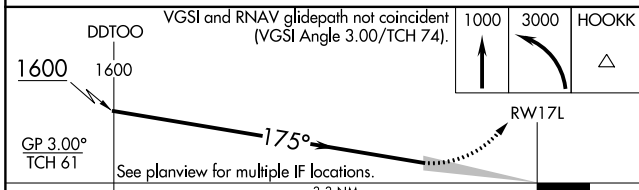
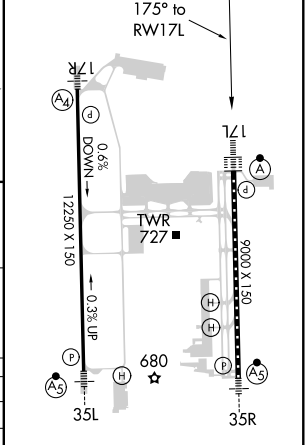
▼ For uncompensated Baro-VNAV systems, procedure NA below -6°C (22°F) or above 54°C (130°F). Simultaneous approach authorized. GPS required. For inop ALS, increase RNP 0.30 all Cats visibility to 1 1/4 SM.

ALSF-2  MISSED APPROACH: Climb to 1000 then climbing left turn to 3000 direct HOOKK and hold.

D-ATIS	AUSTIN APP CON	AUSTIN TOWER	GND CON	CLNC DEL	CPDLC
<b>124.4</b>	<b>127.225 317.65 (EAST)</b> <b>120.875 270.25 (SOUTH)</b> <b>119.0 370.85 (WEST)</b>	<b>121.0 281.5</b>	<b>121.9 348.6</b>	<b>125.5 263.0</b>	



ELEV 542	<b>D</b> TDZE 492
----------	-------------------



CATEGORY	A	B	C	D
RNP 0.24 DA		830/30	338 (300-3/4)	
RNP 0.30 DA		890/45	398 (400-3/4)	

## AUTHORIZATION REQUIRED

HIRL Rwy 17L-35R and 17R-35L  
TDZ/CL Rwy 17L and 35R

SC-3, 25 FEB 2021 to 25 MAR 2021

SC-3, 25 FEB 2021 to 25 MAR 2021