

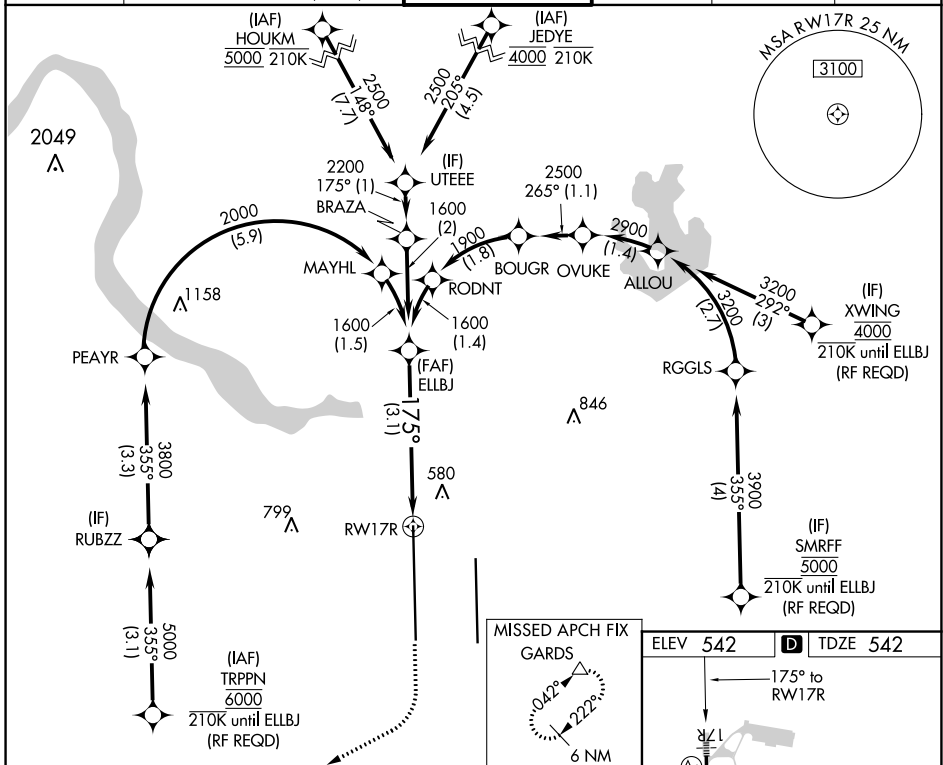
APP CRS	Rwy Idg	12250
175°	TDZE	542
	Apt Elev	542

RNAV (RNP) Z RWY 17R

AUSTIN-BERGSTROM INTL (AUS)

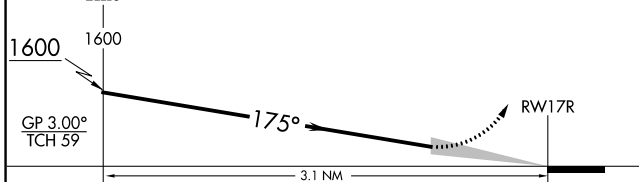
RNP AR APCH. RF required. RADAR required.	MALS	MISSED APPROACH: Climb to 1000 then climbing right turn to 3500 direct GARDS and hold.
Simultaneous approach authorized. For uncompensated Baro-VNAV systems, procedure NA below -5°C or above 54°C.		

D-ATIS	AUSTIN APP CON	AUSTIN TOWER	GND CON	CLNC DEL	CPDLC
124.4	127.225 317.65 (EAST) 120.875 270.25 (SOUTH) 119.0 370.85 (WEST)	121.0 281.5	121.9 348.6	125.5 263.0	

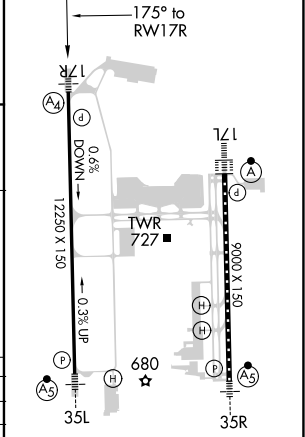


See planview for multiple IF locations.

1000	3500	GARDS



ELEV 542		TDZE 542
----------	--	----------



CATEGORY	A	B	C	D
RNP 0.30 DA		883/40	341 (400-3/4)	

AUTHORIZATION REQUIRED

TDZ/CL Rws 17L and 35R
HIRL Rws 17L-35R and 17R-35L

SC-3, 25 FEB 2021 to 25 MAR 2021

SC-3, 25 FEB 2021 to 25 MAR 2021