

WAAS CH 62829 W17A	APP CRS 175°	Rwy Idg TDZE Apt Elev	9000 492 542
--	------------------------	-----------------------------	---

RNAV (GPS) Y RWY 17L

AUSTIN-BERGSTROM INTL (AUS)

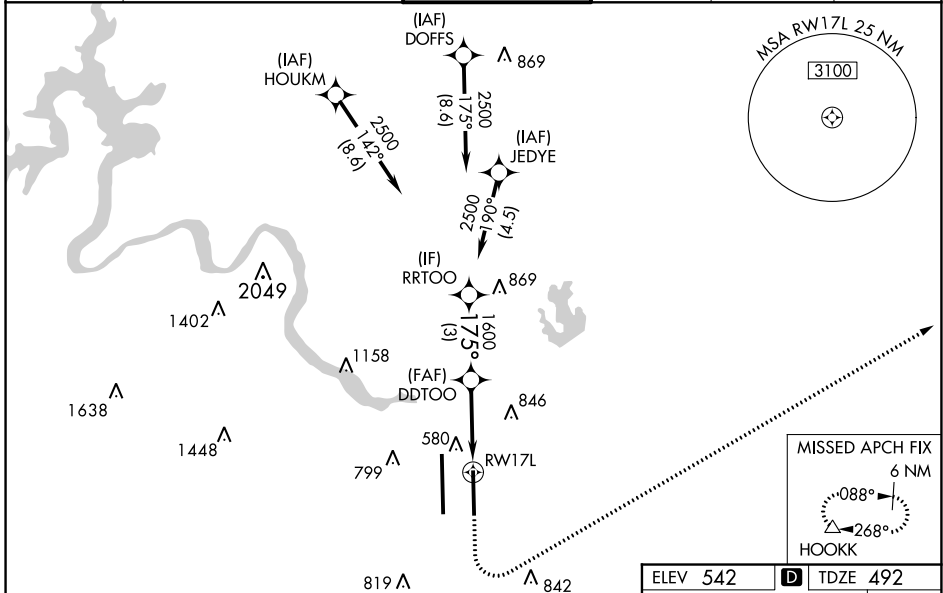
RNP APCH.

⚠ For uncompensated Baro-VNAV systems, LNAV/VNAV NA below -6°C or above 54°C.
⚠ Simultaneous approach authorized. LNAV procedure NA during simultaneous operations.
 Use of FD or AP providing RNAV track guidance required during simultaneous operations.
 For inop ALS, increase visibility LPV Cat E to RVR 4000, LNAV/VNAV Cat E to 1½ SM and LNAV Cats C/D/E to 1½ SM.



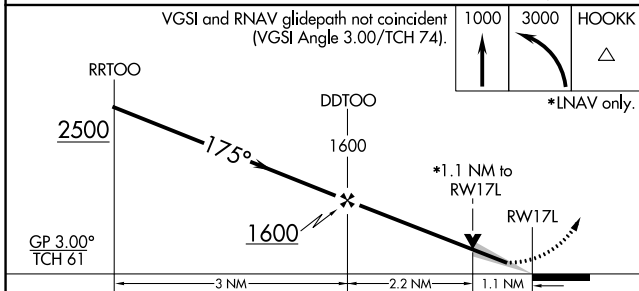
MISSED APPROACH:
 Climb to 1000 then climbing left turn to 3000 direct HOOKK and hold.

D-ATIS 124.4	AUSTIN APP CON 127.225 317.65 (EAST) 120.875 270.25 (SOUTH) 119.0 370.85 (WEST)	AUSTIN TOWER 121.0 281.5	GND CON 121.9 348.6	CLNC DEL 125.5 263.0	CPDLC
------------------------	---	------------------------------------	-------------------------------	--------------------------------	-------



SC-3, 25 FEB 2021 to 25 MAR 2021

SC-3, 25 FEB 2021 to 25 MAR 2021



ELEV 542	D TDZE 492
----------	-------------------

CATEGORY	A	B	C	D	E
LPV DA	692/18		200 (200-½)		
LNAV/VNAV DA	906/45		414 (400-¾)		
LNAV MDA	900/24	408 (400-½)	900/40		408 (400-¾)
C CIRCLING	1040-1 498 (500-1)	1100-1 558 (600-1)	1200-1¾ 658 (700-1¾)	1200-2 658 (700-2)	1520-3 978 (1000-3)

