

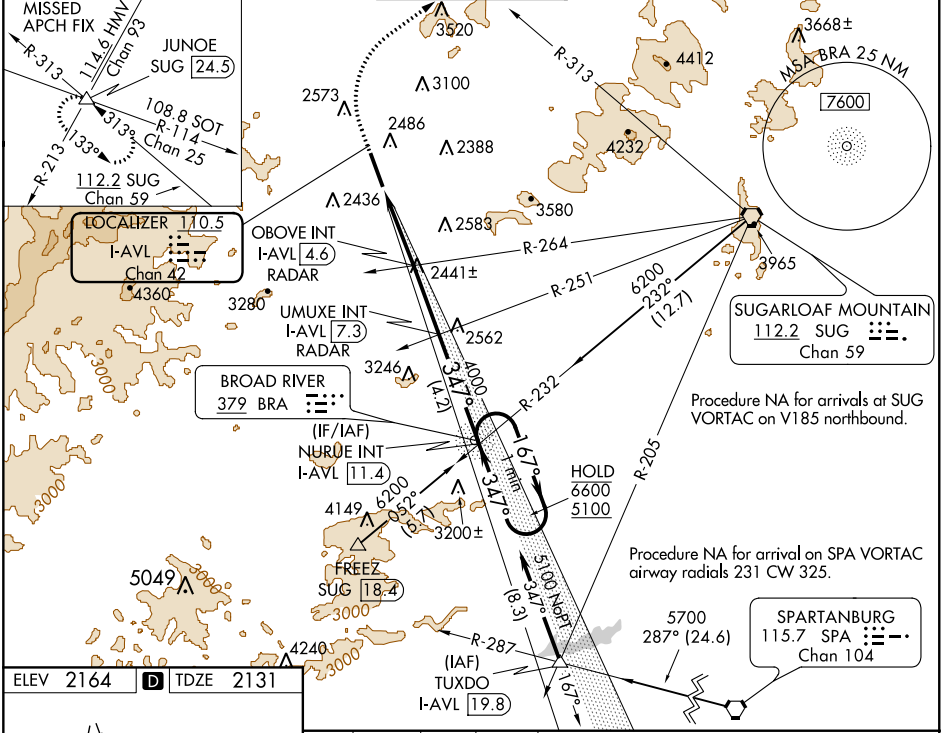
LOC/DME I-AVL 110.5 Chan 42	APP CRS 347°	Rwy Idg TDZE Apt Elev	8001 2131 2164
--	------------------------	-----------------------------	---

ILS or LOC RWY 35

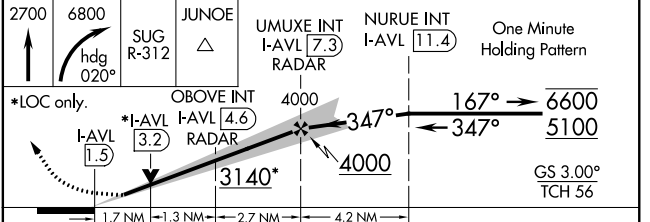
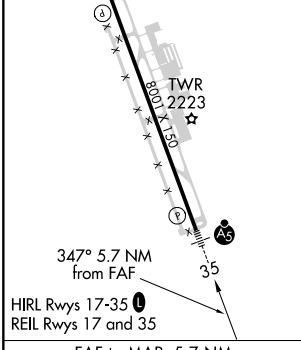
ASHEVILLE RGNL (AVL)

⚠ Circling NA west of Rwy 17-35. For inop ALS, increase S-LOC 35 ABOVE fix minimums Cat C/D visibility to 1½ SM. **MALSR** MISSED APPROACH: Climb to 2700 then climbing right turn to 6800 on heading 020° and SUG VORTAC R-312 to JUNOE INT/SUG 24.5 DME and hold, continue climb-inhold to 6800.

ATIS 120.2	ASHEVILLE APP CON ★ 124.65 269.575	ASHEVILLE TOWER ★ 121.1 (CTAF) 0 257.8	GND CON 121.9	UNICOM 122.95
----------------------	--	--	-------------------------	-------------------------



ELEV 2164	D	TDZE 2131
-----------	----------	-----------



CATEGORY	A	B	C	D
S-ILS 35	2334/24		203 (200-½)	
S-LOC 35	3140/40 1009 (1000-¾)	3140/55 1009 (1000-1)	3140-2½	1009 (1000-2½)
C CIRCLING	3140-1¼ 976 (1000-1¼)	3140-1½ 976 (1000-1½)	3460-3 1296 (1300-3)	3720-3 1556 (1600-3)
OBOVE FIX MINIMUMS (DUAL VOR RECEIVERS OR DME OR RADAR REQUIRED)				
S-LOC 35	2700/24	569 (600-½)	2700-1¼	569 (600-1¼)
C CIRCLING	2800-1 636 (700-1)	2880-1 716 (800-1)	3460-3 1296 (1300-3)	3720-3 1556 (1600-3)

SE-2, 25 FEB 2021 to 25 MAR 2021

SE-2, 25 FEB 2021 to 25 MAR 2021