

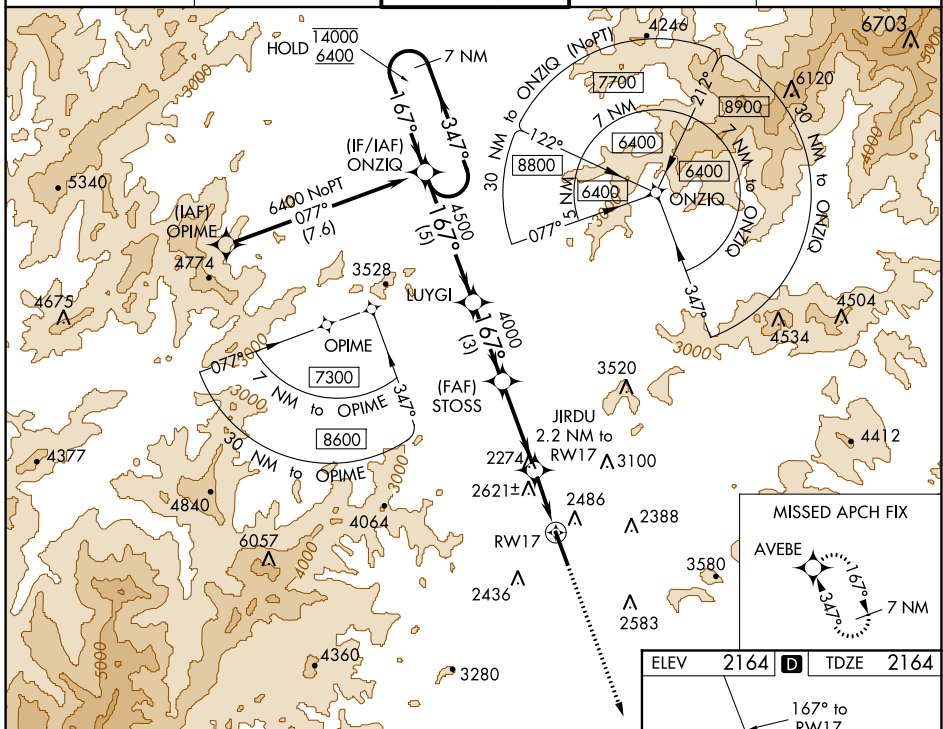
WAAS CH 93641 W17A	APP CRS 167°	Rwy ldg TDZE Apt Elev	8001 2164 2164
--	------------------------	-----------------------------	---

RNAV (GPS) RWY 17

ASHEVILLE RGNL (AVL)

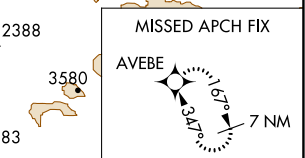
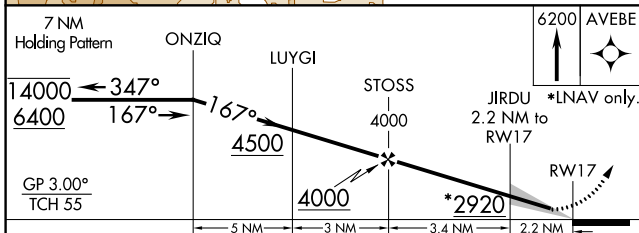
RNP APCH.	MALSR	MISSED APPROACH: Climb to 6200 direct AVEBE and hold, continue climb-in-hold to 6200.
<p>▼ Circling NA west of Rwy 17-35. For uncompensated Baro-VNAV systems, LNAV/VNAV NA below -13°C or above 54°C. For inop ALS, increase LNAV/VNAV all Cats visibility to 2½ SM and increase LNAV Cats C/D visibility to 2 SM.</p>		

ATIS 120.2	ASHEVILLE APP CON* 124.65 269.575	ASHEVILLE TOWER* 121.1 (CTAF) 0 257.8	GND CON 121.9	UNICOM 122.95
----------------------	---	---	-------------------------	-------------------------

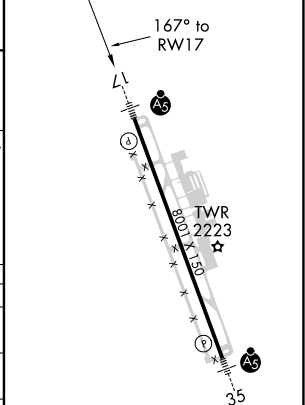


SE-2, 25 FEB 2021 to 25 MAR 2021

SE-2, 25 FEB 2021 to 25 MAR 2021



ELEV	2164	TDZE	2164
------	------	------	------



CATEGORY	A	B	C	D
LPV DA		2364-½	200 (200-½)	
LNAV/VNAV DA		2960-1¾	796 (800-1¾)	
LNAV MDA	2880-½	716 (800-½)	2880-1⅝	716 (800-1⅝)
C CIRCLING	2880-1	716 (800-1)	3460-3 1296 (1300-3)	3720-3 1556 (1600-3)

HIRL Rwsy 17-35	0
REIL Rwsy 17 and 35	