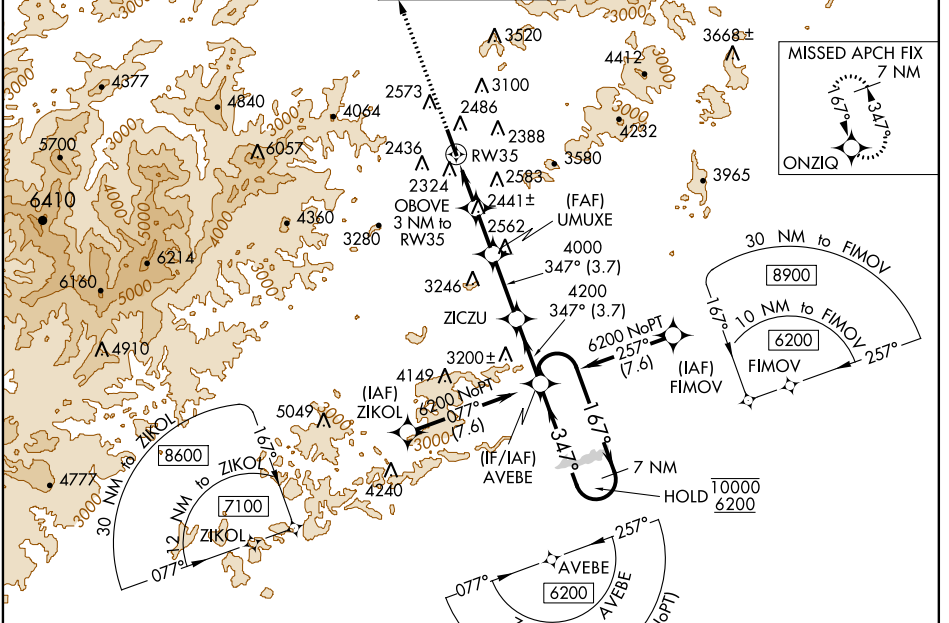


WAAS CH <b>48941</b> <b>W35A</b>	APP CRS <b>347°</b>	Rwy ldg TDZE Apt Elev	<b>8001</b> <b>2141</b> <b>2164</b>
--	------------------------	-----------------------------	---

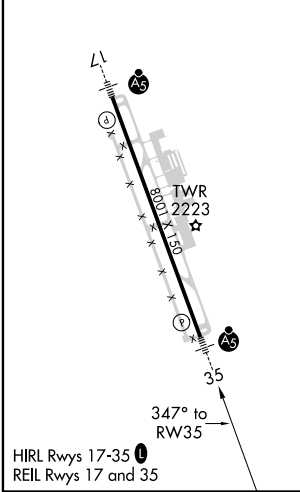
# RNAV (GPS) RWY 35

ASHEVILLE RGNL (AVL)

RNP APCH.		MALSR	MISSED APPROACH: Climb to 6800 direct ONZIQ and hold, continue climb-in-hold to 6800.	
ATIS <b>120.2</b>	ASHEVILLE APP CON* <b>124.65 269.575</b>	ASHEVILLE TOWER* <b>121.1 (CTAF) 0 257.8</b>	GND CON <b>121.9</b>	UNICOM <b>122.95</b>



ELEV 2164	<b>D</b>	TDZE 2141
-----------	----------	-----------



6800	ONZIQ	7 NM Holding Pattern		
*LNAV only.				
RW35	OBOVE 3 NM to RW35	UMUXE 4000	ZICZU	AVEBE
1.5 NM	1.5 NM	2.7 NM	3.7 NM	3.7 NM
<p>3140*      4000      4200      10000      6200</p> <p>167°      347°      347°</p> <p>GP 3.00° TCH 56</p>				
CATEGORY	A	B	C	D
LPV DA	2342/24		201 (200-½)	
LNAV/VNAV DA	2577/40		436 (500-¾)	
LNAV MDA	2660/24	519 (500-½)	2660/55	519 (500-1)
<b>CIRCLING</b>	2800-1 636 (700-1)	2880-1 716 (800-1)	3460-3 1296 (1300-3)	3720-3 1556 (1600-3)

SE-2, 25 FEB 2021 to 25 MAR 2021

SE-2, 25 FEB 2021 to 25 MAR 2021