

|  |                        |   |
|--|------------------------|---|
| WAAS<br>CH <b>69213</b><br><b>W22A</b> | APP CRS<br><b>224°</b> | Rwy Idg <b>7501</b><br>TDZE <b>933</b><br>Apt Elev <b>962</b> |
|--|------------------------|---|

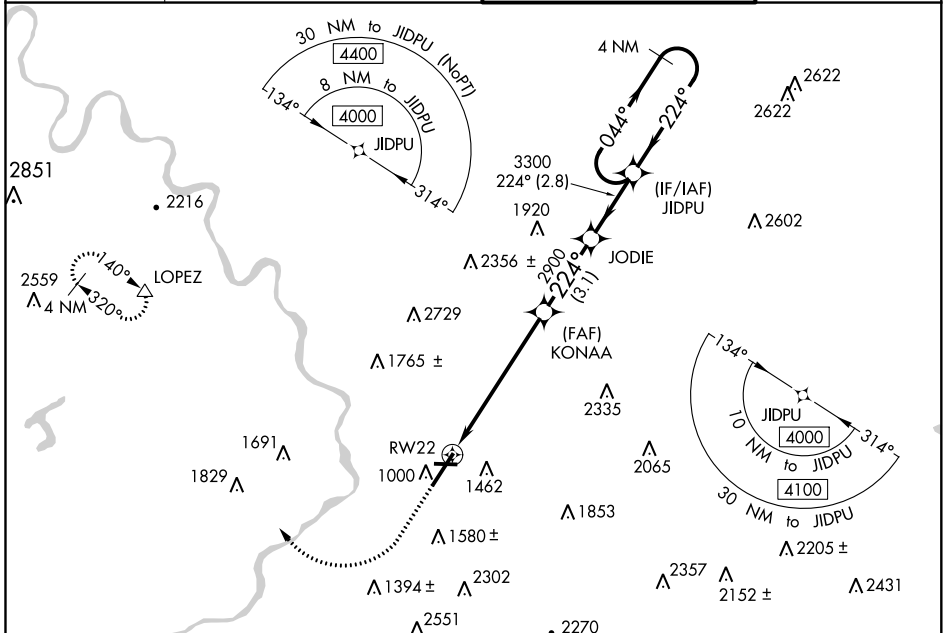
# RNAV (GPS) RWY 22

WILKES-BARRE/SCRANTON INTL (AVP)

**⚠** Night landing: Rwy 10, 28 NA. For uncompensated Baro-VNAV systems, LNAV/VNAV NA below -17°C (2°F) or above 54°C (130°F). When local altimeter setting not received, procedure NA. Circling NA for Cats C and D southeast of Rwy 4-22. DME/DME RNP-0.3 NA.

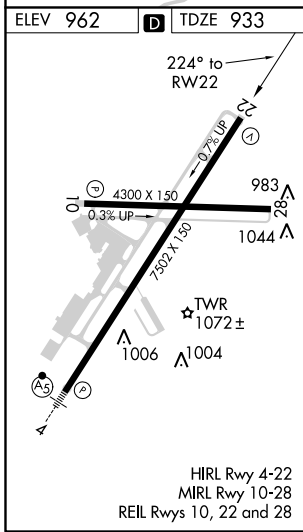
**⚠** MISSED APPROACH: Climb to 1900 then climbing right turn to 4000 direct LOPEZ and hold.

|                      |   |  |                         |
|----------------------|---|--|-------------------------|
| ATIS<br><b>111.6</b> | WILKES-BARRE APP CON<br><b>120.95 256.7</b> (280°-100°)<br><b>126.3 256.7</b> (101°-279°) | WILKES-BARRE TOWER<br><b>120.1 257.8</b> | GND CON<br><b>121.9</b> |
|----------------------|---|--|-------------------------|



NE-4, 25 FEB 2021 to 25 MAR 2021

NE-4, 25 FEB 2021 to 25 MAR 2021



|                   |                         |                           |  |                         |
|-------------------|-------------------------|---------------------------|--|-------------------------|
| 1900              | 4000                    | LOPEZ                     | VGSI and RNAV glidepath not coincident (VGSI Angle 3.00/TCH 54). | 4 NM Holding Pattern    |
| *LNAV only.       |                         | KONAA 2900                | JODIE  | JIDPU                   |
| *1.8 NM to RWY 22 |                         | 2900                      | 3300   | 4000                    |
| 1.8 NM            |                         | 4.3 NM                    | 3.1 NM   | 2.8 NM                  |
| CATEGORY          | A                       | B                         | C  | D                       |
| LPV DA            |                         | 1178/40                   | 245 (200-¾)  |                         |
| LNAV/VNAV DA      |                         | 1392-1½                   | 459 (500-1½)   |                         |
| LNAV MDA          | 1500/55                 | 567 (600-1)               | 1500-¾   | 567 (600-1¾)            |
| <b>C</b> CIRCLING | 1840-1¼<br>878 (900-1¼) | 1980-1½<br>1018 (1100-1½) | 1980-3<br>1018 (1100-3)  | 2280-3<br>1318 (1400-3) |