

WAAS CH 45816 W18A	APP CRS 184°	Rwy Idg TDZE 752 Apt Elev 754	4000
--	------------------------	---	-------------

RNAV (GPS) RWY 18

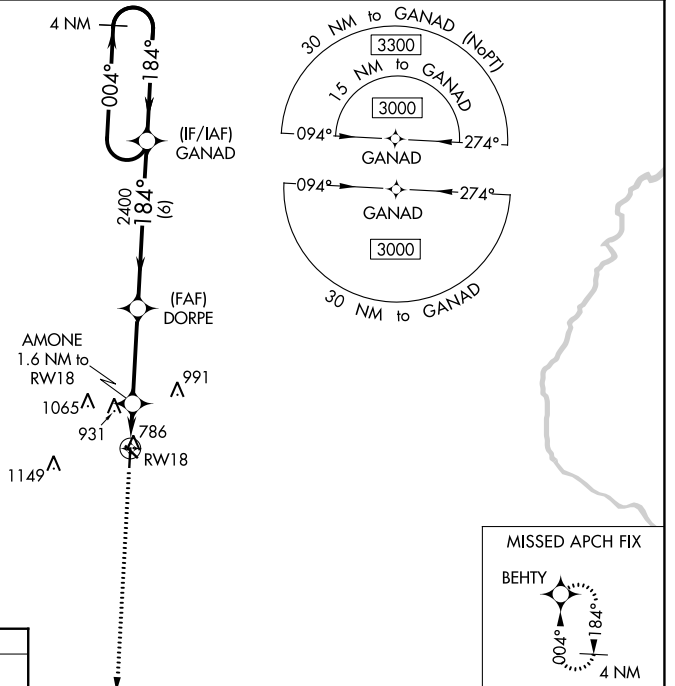
WASHINGTON MUNI (A WG)

RNP APCH.

▼ For uncompensated Baro-VNAV systems, LNAV/VNAV NA below -6°C (22°F) or above 54°C (130°F).
 ▲ Baro-VNAV NA when using Iowa City altimeter setting. When local altimeter setting not received, use Iowa City altimeter setting: increase LPV DA to 1064 feet, LNAV/VNAV DA to 1116 feet; increase all MDAs 80 feet and visibility LNAV and Circling Cat C ¼ SM.

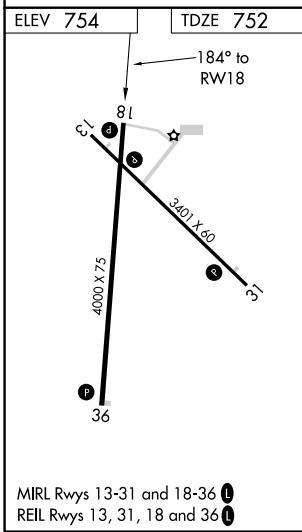
MISSED APPROACH:
 Climb to 3000 direct
 BEHTY and hold.

AWOS-3 127.825	CHICAGO CENTER 135.6 370.95	UNICOM 122.7 (CTAF) 0
--------------------------	---------------------------------------	---------------------------------



NC-3, 25 FEB 2021 to 25 MAR 2021

NC-3, 25 FEB 2021 to 25 MAR 2021



3000	BEHTY	VGSi and RNAV glidepath not coincident (VGSi Angle 3.00/TCH 20).		GANAD	4 NM Holding Pattern
*LNAV only.	AMONE 1.6 NM to RW18	DORPE 2400	184°	184°	3000
	RW18	*1300	2400		GP 3.00° TCH 45
	1.6 NM	3.4 NM	6 NM		
CATEGORY	A	B	C	D	
LPV DA		1002-1 250 (300-1)		NA	
LNAV/VNAV DA		1054-1 302 (300-1)		NA	
LNAV MDA	1160-1	408 (500-1)	1160-1½ 408 (500-1½)	NA	
CIRCLING	1200-1 446 (500-1)	1260-1 506 (600-1)	1500-2¼ 746 (800-2¼)	NA	