

VOR/DME IOW <b>116.2</b> Chan <b>109</b>	APP CRS <b>006°</b>	Rwy Idg <b>4000</b> TDZE <b>752</b> Apt Elev <b>754</b>
--	------------------------	---

# VOR RWY 36

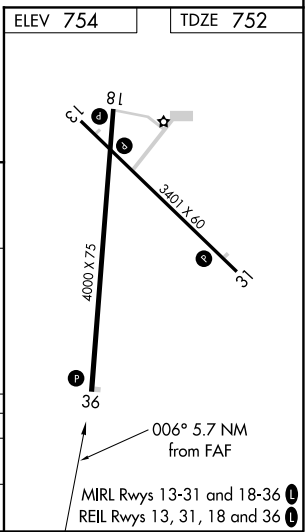
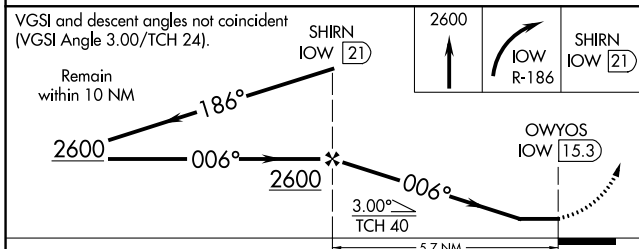
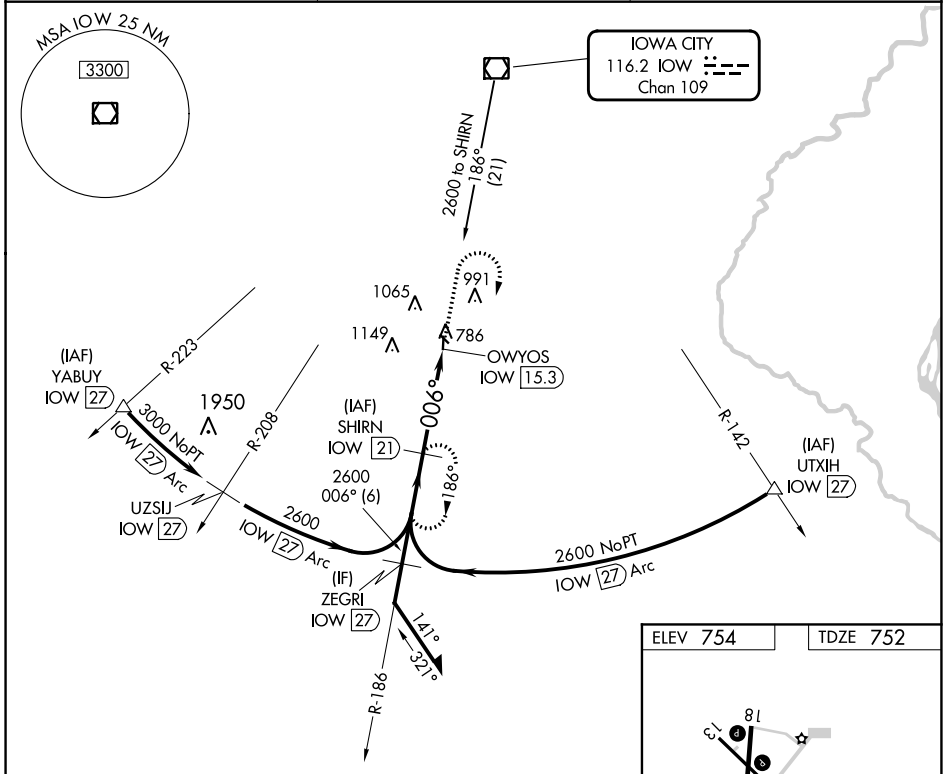
WASHINGTON MUNI (AWG)

DME Required.

**⚠** When local altimeter setting not received, use Iowa City altimeter setting and increase all MDAs 80 feet and visibility S-36 Cat C and Circling Cat C ¼ SM.

MISSED APPROACH: Climb to 2600 then right turn on IOW VOR/DME R-186 to SHRN/21 DME and hold.

AWOS-3 <b>127.825</b>	CHICAGO CENTER <b>135.6 370.95</b>	UNICOM <b>122.7 (CTAF) 0</b>
--------------------------	---------------------------------------	---------------------------------



CATEGORY	A	B	C	D
S-36	1240-1	488 (500-1)	1240-1 3/8 488 (500-1 3/8)	NA
<b>C</b> CIRCLING	1240-1 486 (500-1)	1260-1 506 (600-1)	1500-2 1/4 746 (800-2 1/4)	NA

NC-3, 25 FEB 2021 to 25 MAR 2021

NC-3, 25 FEB 2021 to 25 MAR 2021