

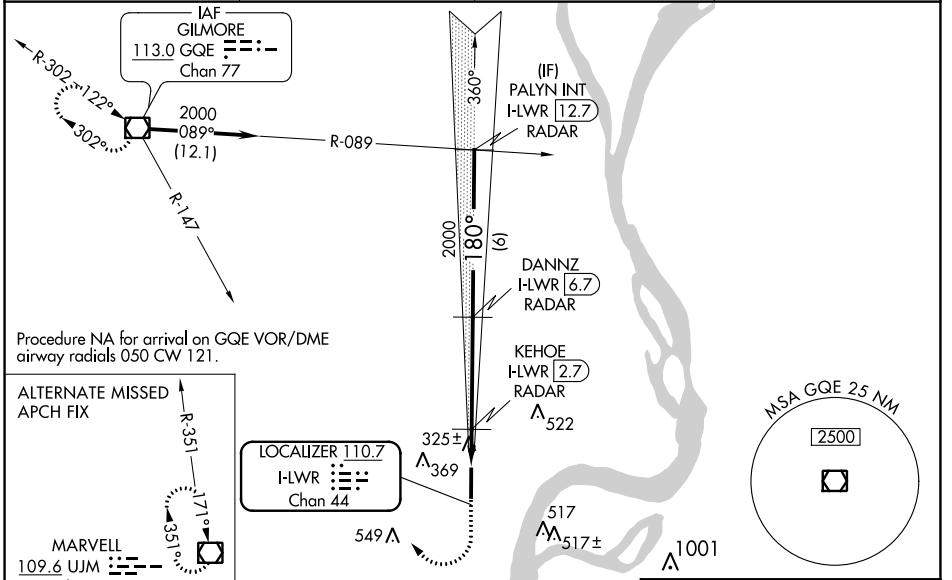
LOC/DME I-LWR 110.7 Chan 44	APP CRS 180°	Rwy Idg 6003 TDZE 213 Apt Elev 213
---	------------------------	---

ILS or LOC RWY 17

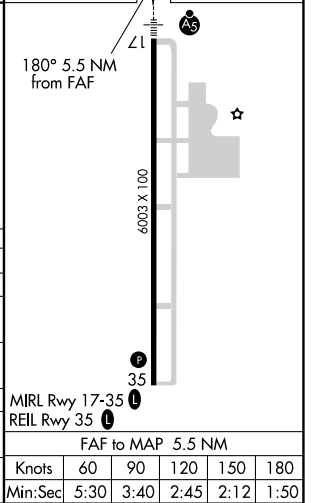
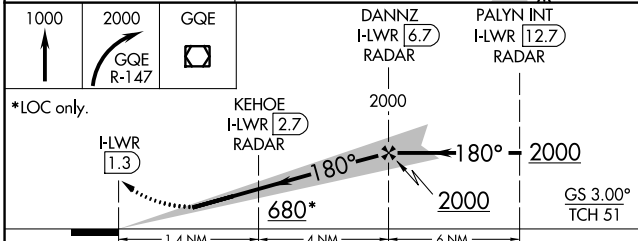
WEST MEMPHIS MUNI (A W M)

DME or RADAR required.	MALSR	MISSED APPROACH: Climb to 1000 then climbing right turn to 2000 on GQE VOR/DME R-147 to GQE VOR/DME and hold.
<p>NA For inop ALS, increase S-LOC 17 Cat C/D visibility to 1½ SM and KEHOE FIX MINIMUMS S-LOC 17 Cats C/D visibility to 1 SM.</p>		

ASOS 118.175	MEMPHIS APP CON 119.1 291.6	CLNC DEL 121.7	UNICOM 123.05 (CTAF) 1
------------------------	---------------------------------------	--------------------------	---



ELEV 213	TDZE 213
----------	----------



CATEGORY	A	B	C	D
S-ILS 17	413-½ 200 (200-½)			
S-LOC 17	680-½ 467 (500-½)	680-1 467 (500-1)		
CIRCLING	680-1 467 (500-1)	680-1½ 467 (500-1½)	780-2 567 (600-2)	
KEHOE FIX MINIMUMS				
S-LOC 17	580-½ 367 (400-½)	580-⅝ 367 (400-⅝)		
CIRCLING	640-1 427 (500-1)	680-1 467 (500-1)	680-1½ 467 (500-1½)	780-2 567 (600-2)

MIRL Rwy 17-35 1	
REL Rwy 35 1	
FAF to MAP 5.5 NM	
Knots	60 90 120 150 180
Min:Sec	5:30 3:40 2:45 2:12 1:50

SC-1, 25 FEB 2021 to 25 MAR 2021

SC-1, 25 FEB 2021 to 25 MAR 2021