

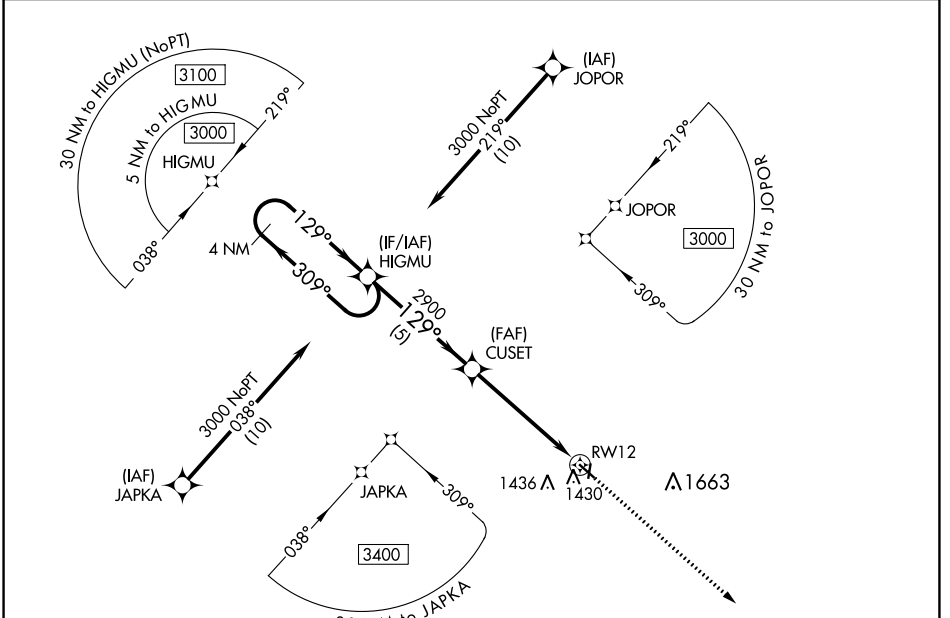
APP CRS	Rwy Idg	<b>3960</b>
<b>129°</b>	TDZE	<b>1215</b>
	Apt Elev	<b>1216</b>

# RNAV (GPS) RWY 12

ALGONA MUNI (A.X.A)

RNP APCH.	<p>When local altimeter setting not received, use Forest City altimeter setting and increase all MDA 80 feet. Procedure NA at night. Rwy 12 helicopter visibility reduction below 1 SM NA.</p>	<p>MISSED APPROACH: Climb to 3000 direct IFOLA and hold.</p>

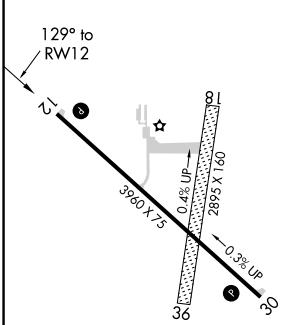
AWOS-3 <b>118.475</b>	MINNEAPOLIS CENTER <b>134.0 288.3</b>	UNICOM <b>122.8 (CTAF) 0</b>
--------------------------	--	---------------------------------



NC-3, 25 FEB 2021 to 25 MAR 2021

NC-3, 25 FEB 2021 to 25 MAR 2021

ELEV 1216	TDZE 1215
-----------	-----------



4 NM Holding Pattern	HIGMU	CUSET	RWY 12
3000	309°	129°	2900
	129°		3.00' TCH 40'
	5 NM	5.2 NM	
CATEGORY	A	B	C
LNAV MDA	1680-1	465 (500-1)	NA

MIRL Rwy 12-30 0  
 REIL Rwy 12 and 30 0

ALGONA, IOWA  
 Orig-E 07NOV19

43°05'N-94°16'W

# ALGONA MUNI (A.X.A)

## RNAV (GPS) RWY 12