

WAAS CH 65918 W31A	APP CRS 307°	Rwy Idg TDZE Apt Elev	4202 1394 1402
--	------------------------	-----------------------------	---

RNAV (GPS) RWY 31

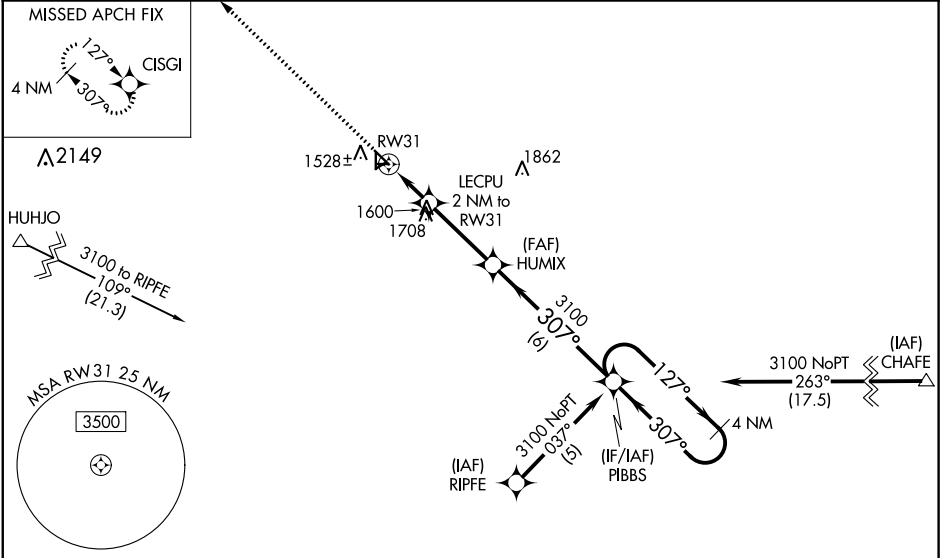
BARNES COUNTY MUNI (BAC)

RNP APCH.

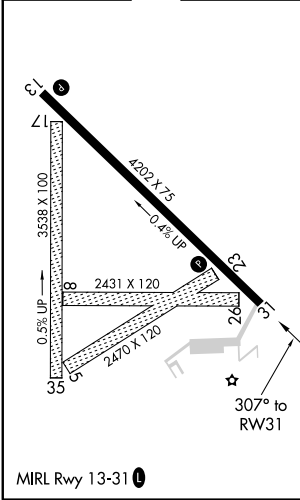
⚠ Baro-VNAV NA when using Jamestown altimeter setting. For uncompensated Baro-VNAV systems, LNAV/VNAV NA below -17°C or above 54°C. When local altimeter setting not received, use Jamestown altimeter setting and increase LPV DA 77 feet and LNAV/VNAV DA 227 feet, and all MDA 80 feet; increase LPV all Cats visibility ½ mile, LNAV/VNAV all Cats visibility ¾ mile and increase Circling Cat C visibility ½ mile. Circling NA to Rwy 5, 8, 17, 23, 26, and 35. Rwy 31 helicopter visibility reduction below ¾ SM NA.

MISSED APPROACH: Climb to 3000 direct CISGI and hold.

AWOS-3 118.725	MINNEAPOLIS CENTER 124.2 270.3	UNICOM 122.8 (CTAF)
--------------------------	--	-------------------------------



ELEV 1402	TDZE 1394
------------------	------------------



3000	CISGI	VGSi and RNAV glidepath not coincident (VGSi Angle 3.00/TCH 28).			
*LNAV only	LEPCU 2 NM to RW31	HUMIX 3100	PIBBS	4 NM Holding Pattern	
	RW31	2040*	3100	3100	GP 3.00° TCH 40
	2 NM	3.2 NM	6 NM		
CATEGORY	A	B	C	D	
LPV DA	1644-1		250 (300-1)	NA	
LNAV/VNAV DA	1717-1¼		323 (400-1¼)	NA	
LNAV MDA	1900-1	506 (500-1)	1900-1½ 506 (500-1½)	NA	
CIRCLING	1920-1 518 (600-1)	2000-1 598 (600-1)	2000-1½ 598 (600-1½)	NA	

NC-1, 25 FEB 2021 to 25 MAR 2021

NC-1, 25 FEB 2021 to 25 MAR 2021