

HI-ILS or LOC W RWY 15

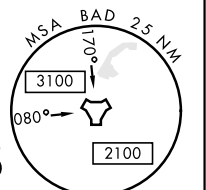
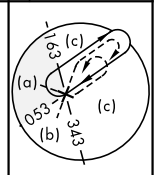
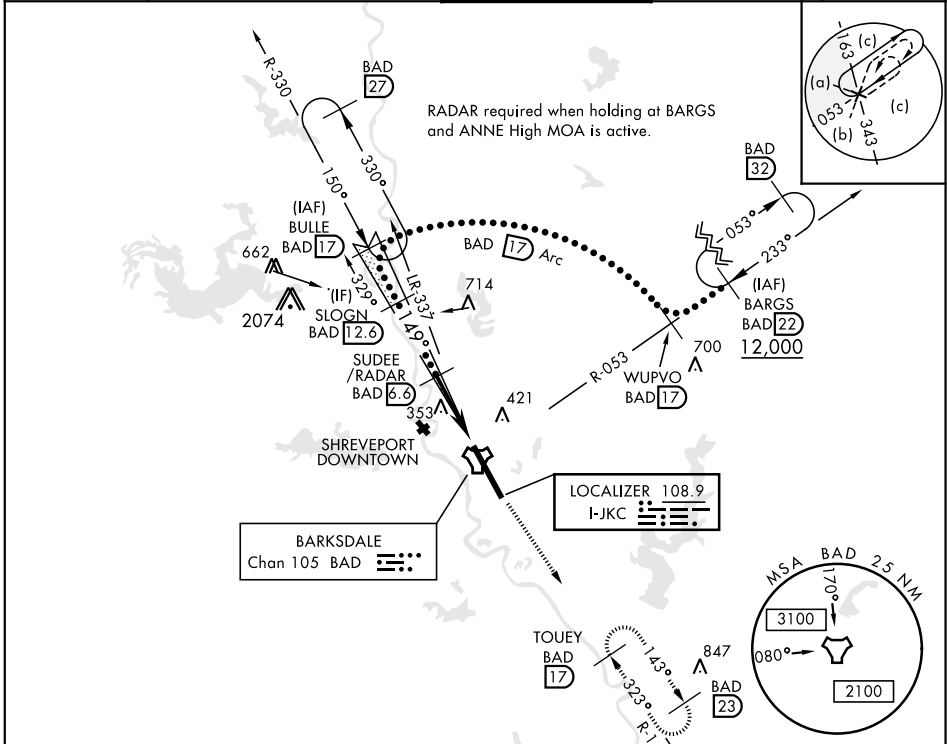
LOC I-JKC 108.9	APCH CRS 149°	Rwy Idg 11,758 THRE 163 Arprt Elev 165	JAL-391 [USAF]	BARKSDALE AFB (KBAD)
---------------------------	-------------------------	---	----------------	----------------------

* When ALS inop, increase CAT CDE RVR to 40 and vis to ¾ mile.
 ** When ALS inop, increase CAT CDE vis to 1¾ miles.
 *** Circling not authorized W of Rwy.



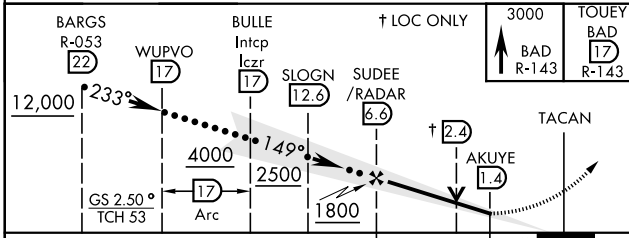
MISSED APPROACH: Climb to 3000 via BAD R-143 direct TOUEY and hold.

ATIS 307.025	SHREVEPORT APP CON 320°-152° 123.75 360.725 153°-319° 119.9 335.55	BARKSDALE TOWER 128.25 278.3	GND CON 121.8 253.5	ASR
------------------------	--	--	-------------------------------	-----

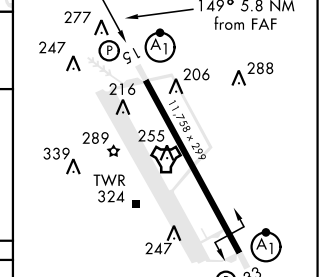


RADAR or DME REQUIRED

EMERG SAFE ALT 100 NM 3300



ELEV 165	THRE 163
----------	----------



CATEGORY	C	D	E
S-ILS 15*	363/24	200	(200-½)
S-LOC 15**	640/50	477	(500-1)
*** CIRCLING	NOT AUTHORIZED	760-2 595 (600-2)	780-2¼ 615 (700-2¼)

HIRL Rwy 15-33					
FAF to MAP 5.2 NM					
Knots	120	140	160	180	200
Min:Sec	2:36	2:14	1:57	1:44	1:34

HI-ILS or LOC W RWY 15

SC-4, 25 FEB 2021 to 25 MAR 2021

SC-4, 25 FEB 2021 to 25 MAR 2021