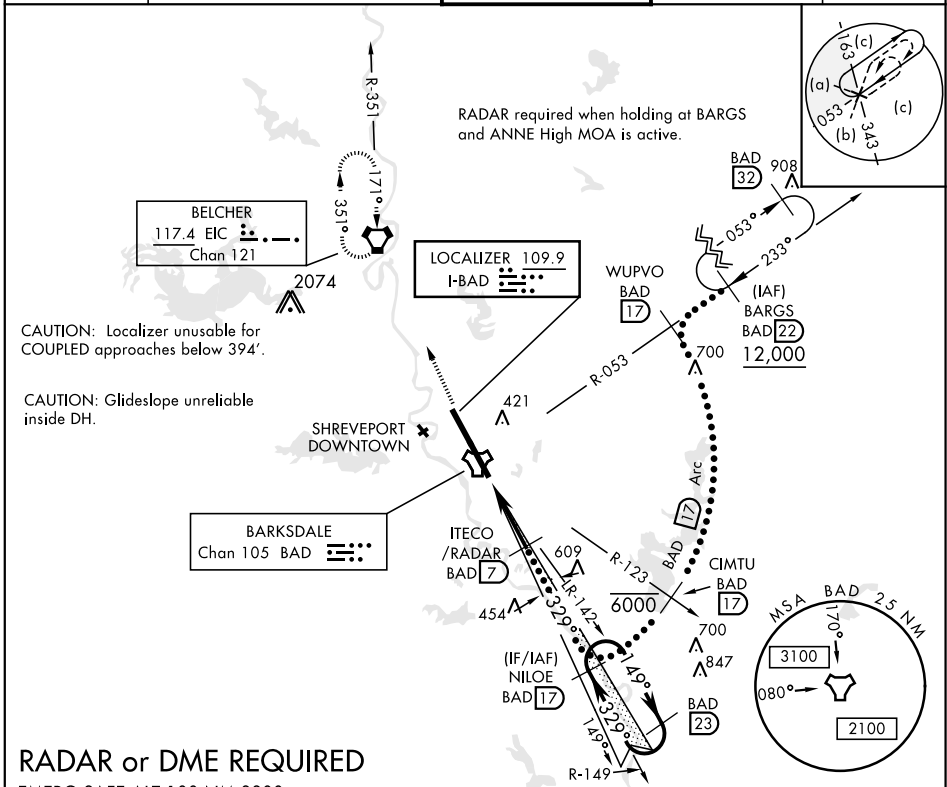


HI-ILS or LOC Z RWY 33

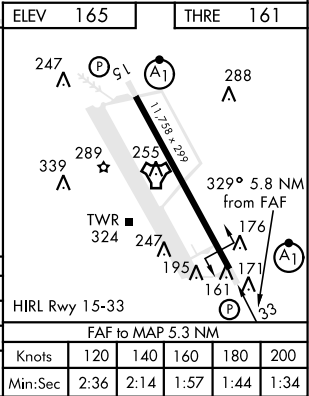
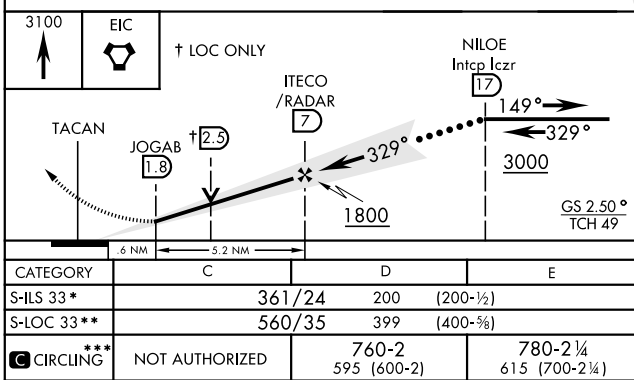
LOC I-BAD 109.9	APCH CRS 329°	Rwy Idg 11,758 THRE 161 Arprt Elev 165	JAL-391 [USAF]	BARKSDALE AFB (KBAD)
* When ALS inop, increase CAT CDE RVR to 40 and vis to 3/4 mile. ** When ALS inop, increase CAT CDE RVR to 60 and vis to 1 1/8 miles. *** Circling not authorized W of Rwy.			ALS F-1 	MISSED APPROACH: Climb to 3100 direct to EIC VORTAC and hold.

ATIS 307.025	SHREVEPORT APP CON 320°-152° 123.75 360.725 153°-319° 119.9 335.55	BARKSDALE TOWER 128.25 278.3	GND CON 121.8 253.5	ASR
------------------------	--	--	-------------------------------	-----



RADAR or DME REQUIRED

EMERG SAFE ALT 100 NM 3300



HI-ILS or LOC Z RWY 33

SC-4, 25 FEB 2021 to 25 MAR 2021

SC-4, 25 FEB 2021 to 25 MAR 2021