

# ILS or LOC W RWY 33

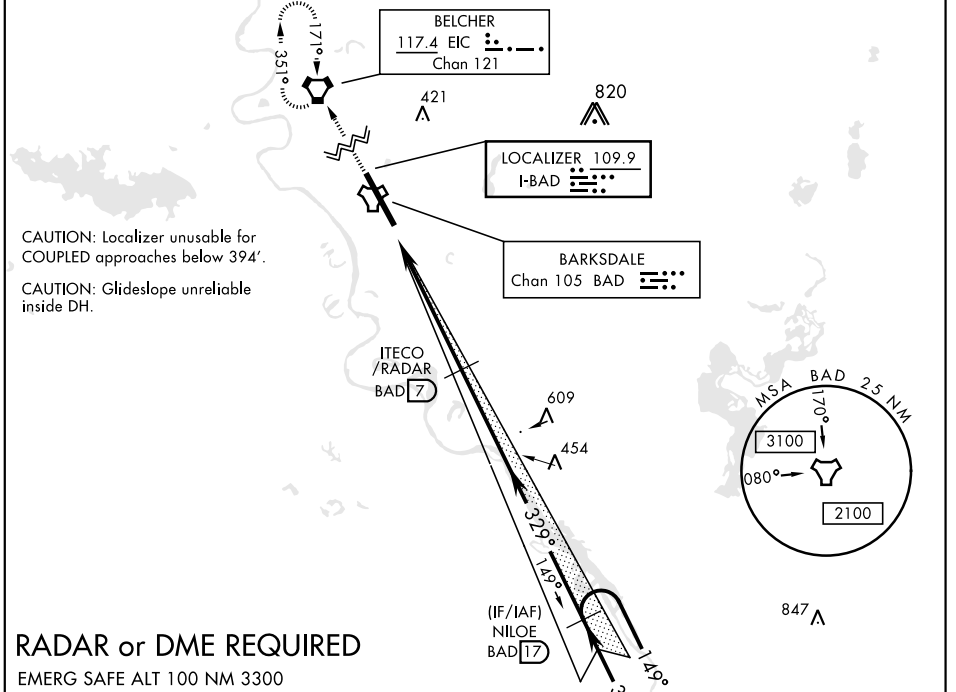
LOC I-BAD <b>109.9</b>	APCH CRS <b>329°</b>	Rwy ldg <b>11,758</b> THRE <b>161</b> Arprt Elev <b>165</b>	AL-391 [USAF]	BARKSDALE AFB (KBAD)
---------------------------	-------------------------	---	---------------	----------------------

\* When ALS inop, increase RVR to 40 and vis to ¼ mile.  
 \*\* When ALS inop, increase CAT AB RVR to 55 and vis to 1 mile,  
 CAT CDE RVR to 60 and vis to 1 ½ miles.  
 \*\*\* Circling not authorized W of Rwy.



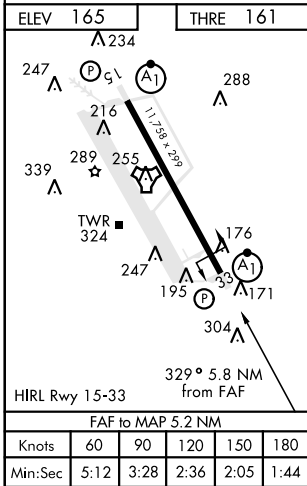
MISSED APPROACH: Climb to 3100 direct EIC VORTAC and hold.

ATIS <b>307.025</b>	SHREVEPORT APP CON 320°-152° <b>123.75 360.725</b> 153°-319° <b>119.9 335.55</b>	BARKSDALE TOWER <b>128.25 278.3</b>	GND CON <b>121.8 253.5</b>	ASR
------------------------	--	--	-------------------------------	-----



## RADAR or DME REQUIRED

EMERG SAFE ALT 100 NM 3300



ELEV 165	THRE 161					
3100	EIC	↑ LOC ONLY	NILOE			
		TACAN	JOGAB	ITECO /RADAR	NILOE	
			1.8	2.5	17	
			6 NM	5.2 NM		
CATEGORY	A	B	C	D	E	
S-ILS 33 *	361/24		200	(200-½)		
S-LOC 33 **	560/24	399 (400-½)	560/35	399	(400-¾)	
Ⓢ CIRCLING ***	NOT AUTHORIZED			760-2 595 (600-2)	780-2 ¼ 615 (700-2 ¼)	

# ILS or LOC W RWY 33

SC-4, 25 FEB 2021 to 25 MAR 2021

SC-4, 25 FEB 2021 to 25 MAR 2021