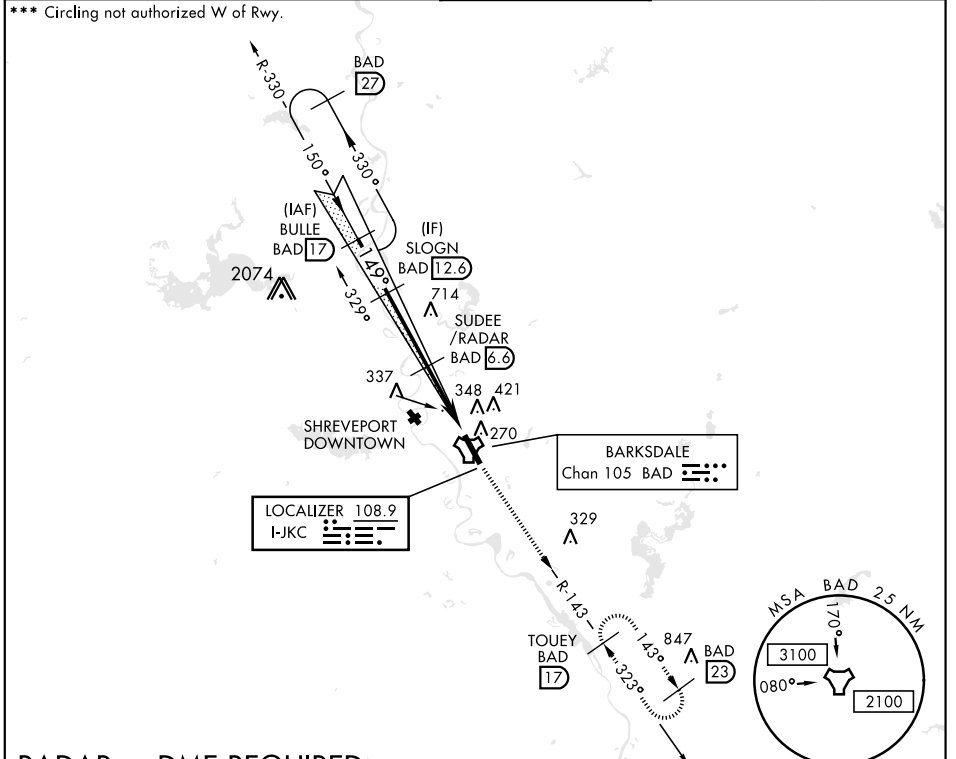


ILS or LOC Z RWY 15

LOC I-JKC 108.9	APCH CRS 149°	Rwy Ldg 11,758 THRE 163 Arprt Elev 165	AL-391 [USAF]	BARKSDALE AFB (KBAD)
* When ALS inop, increase RVR to 40 and vis to 3/4 mile. ** When ALS inop, increase CAT AB RVR to 55 and vis to 1 mile, CAT CDE vis to 1 1/2 miles.			ALSF-1 	MISSED APPROACH: Climb to 3000 via BAD R-143 direct TOUEY and hold.
ATIS 307.025	SHREVEPORT APP CON 320°-152° 123.75 360.725 153°-319° 119.9 335.55	BARKSDALE TOWER 128.25 278.3	GND CON 121.8 253.5	ASR



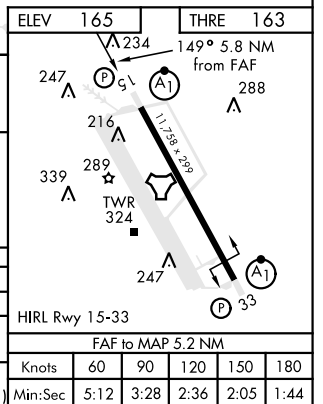
SC-4, 25 FEB 2021 to 25 MAR 2021

SC-4, 25 FEB 2021 to 25 MAR 2021

RADAR or DME REQUIRED

EMERG SAFE ALT 100 NM 3300

BULLE R-330 17	SLOGN 12.6	SUDEE /RADAR 6.6	↑ LOC ONLY	3000 BAD R-143	TOUEY BAD R-143 17
4000	2500	1800	149°	5.2 NM	6 NM
GS 2.50° TCH 53					
CATEGORY	A	B	C	D	E
S-ILS 15*	363/24		200	(200-1/2)	
S-LOC 15**	640/24	477 (500-1/2)	640/50	477 (500-1)	
*** CIRCLING	NOT AUTHORIZED			760-2 595 (600-2)	780-2 1/4 615 (700-2 1/4)



ILS or LOC Z RWY 15