

TACAN Y RWY 15

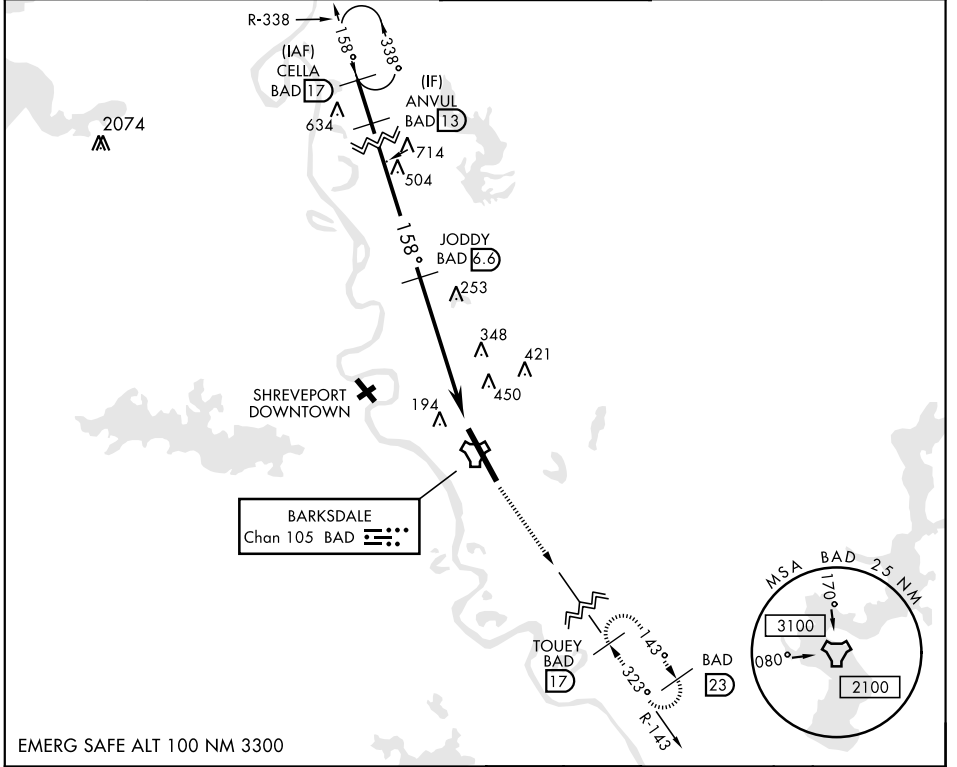
TACAN BAD Chan 105	APCH CRS 158°	Rwy Ldg 11,758 THRE 163 Arprt Elev 165	AL-391 [USAF]	BARKSDALE AFB (KBAD)
------------------------------	-------------------------	---	---------------	----------------------

* When ALS inop, increase CAT AB RVR to 55 and vis to 1 mile
CAT CDE vis to 1 3/8 miles
** Circling not authorized W of Rwy.

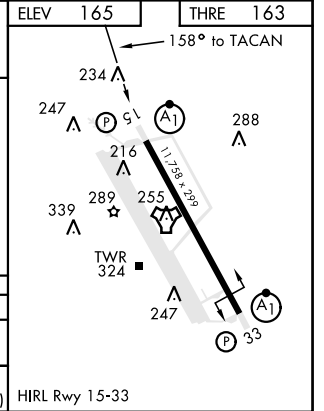
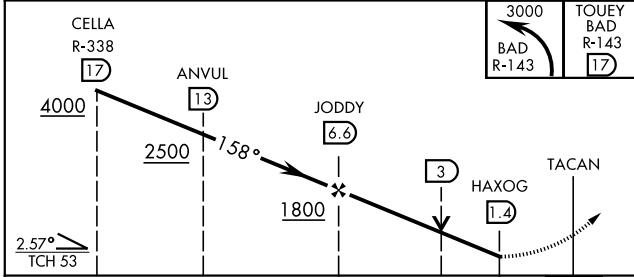


MISSED APPROACH: Climb to 3000 via
BAD R-143 direct TOUEY and hold.

ATIS 307.025	SHREVEPORT APP CON 320°-152° 123.75 360.725 153°-319° 119.9 335.55	BARKSDALE TOWER 128.25 278.3	GND CON 121.8 253.5	ASR
------------------------	--	--	-------------------------------	-----



EMERG SAFE ALT 100 NM 3300



ELEV 165	THRE 163
158° to TACAN	
TWR 324	
HIRL Rwy 15-33	

CATEGORY	A	B	C	D	E
S-15 *	800/24	637 (700-1/2)	800-1 3/8	637 (700-1 3/8)	
CIRCLING **	NOT AUTHORIZED		800-2 635 (700-2)	800-2 1/4 635 (700-2 1/4)	

TACAN Y RWY 15

SC-4, 25 FEB 2021 to 25 MAR 2021

SC-4, 25 FEB 2021 to 25 MAR 2021