

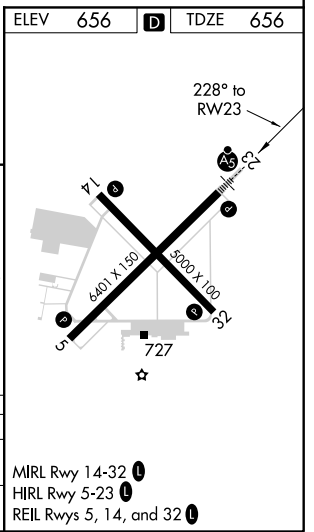
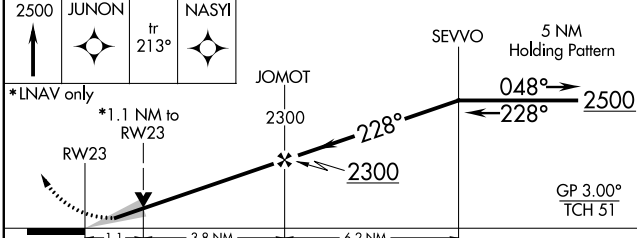
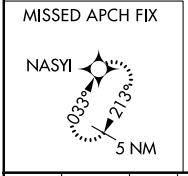
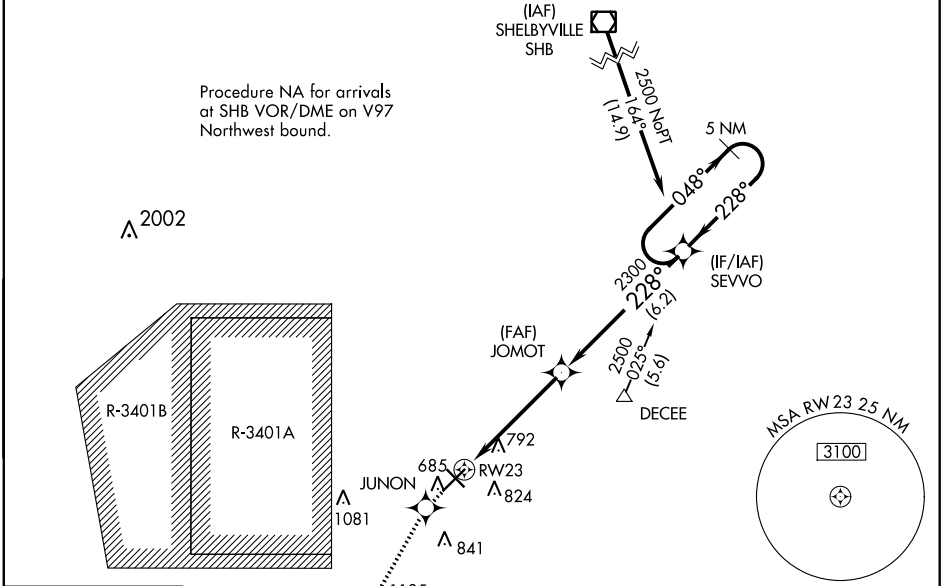
WAAS CH <b>90399</b> <b>W23A</b>	APP CRS <b>228°</b>	Rwy Idg TDZE <b>656</b> Apt Elev <b>656</b>	<b>6401</b>
--	------------------------	---	-------------

# RNAV (GPS) RWY 23

COLUMBUS MUNI (BAK)

RNP APCH.	MALSR 	MISSED APPROACH: Climb to 2500 direct JUNON and on track 213° to NASYI and hold.
<p> VDP NA when using Indianapolis Intl altimeter setting. If local altimeter setting not received, use Indianapolis Intl altimeter setting and increase all DA's/MDA's 100 feet. For inoperative MALSR, increase LPV all Cats visibility to 3/4 and LNAV Cat D visibility to 1 1/4.</p>		

AWOS-3 <b>119.75</b>	INDIANAPOLIS APP CON <b>134.85 317.8</b>	COLUMBUS TOWER ★ <b>118.6 (CTAF) 0</b>	GND CON <b>121.6</b>	CLNC DEL <b>134.85</b>	UNICOM <b>122.95</b>
-------------------------	---	---	-------------------------	---------------------------	-------------------------



CATEGORY	A	B	C	D
LPV DA	906-1/2 250 (300-1/2)			
LNAV MDA	1060-1/2 404 (500-1/2)	1060-3/4 404 (500-3/4)	1060-1 404 (500-1)	

- MIRL Rwy 14-32
- HIRL Rwy 5-23
- REIL Rws 5, 14, and 32

EC-2, 25 FEB 2021 to 25 MAR 2021

EC-2, 25 FEB 2021 to 25 MAR 2021