

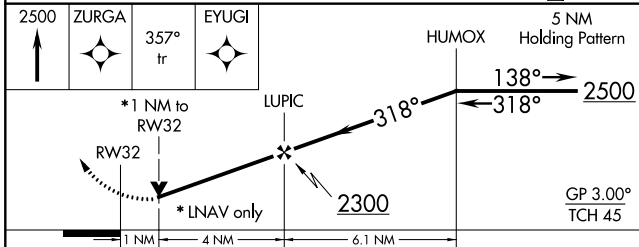
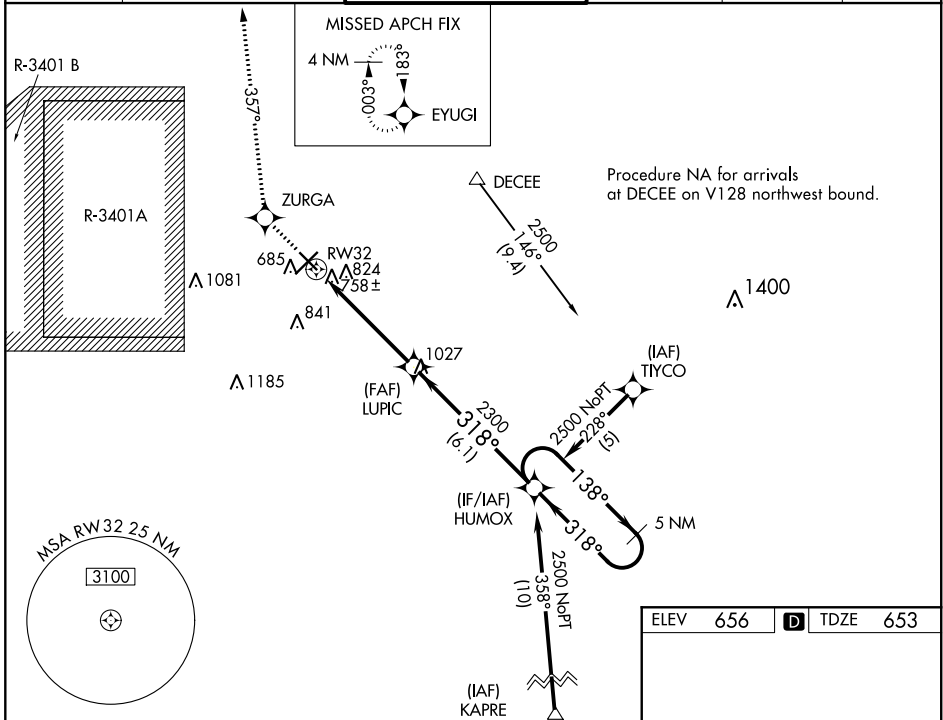
WAAS CH <b>50399</b> <b>W32A</b>	APP CRS <b>318°</b>	Rwy Idg TDZE Apt Elev	<b>5000</b> <b>653</b> <b>656</b>
--	------------------------	-----------------------------	---

# RNAV (GPS) RWY 32

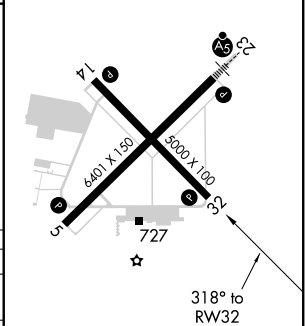
COLUMBUS MUNI (BAK)

RNP APCH.	<p><b>⚠</b> If local altimeter setting not received, use Indianapolis Intl altimeter setting and increase all DAs/MDAs 100 feet. Baro-VNAV and VDP NA when using Indianapolis Intl altimeter setting. Baro-VNAV NA below -16°C (4°F). Rwy 32 helicopter visibility reduction below ¼ SM NA.</p>	<p>MISSED APPROACH: Climb to 2500 direct ZURGA and on 357° track to EYUGI and hold.</p>
-----------	---	---

AWOS-3 <b>119.75</b>	INDIANAPOLIS APP CON <b>134.85 317.8</b>	COLUMBUS TOWER ★ <b>118.6 (CTAF) 0</b>	GND CON <b>121.6</b>	CLNC DEL <b>134.85</b>	UNICOM <b>122.95</b>
-------------------------	---	---	-------------------------	---------------------------	-------------------------



ELEV 656	<b>D</b> TDZE 653
----------	-------------------



CATEGORY	A	B	C	D
LPV DA	1016-1¼		363 (400-1¼)	
LNAV/VNAV DA	1057-1½		404 (500-1½)	
LNAV MDA	1080-1	427 (500-1)	1080-1¼	427 (500-1¼)

MIRL Rwy 14-32  
HIRL Rwy 5-23  
REIL Rws 5, 14, and 32

EC-2, 25 FEB 2021 to 25 MAR 2021

EC-2, 25 FEB 2021 to 25 MAR 2021