

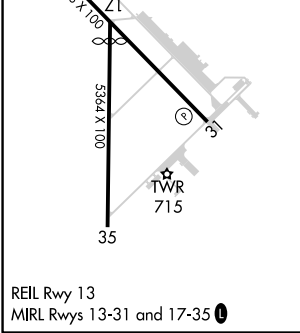
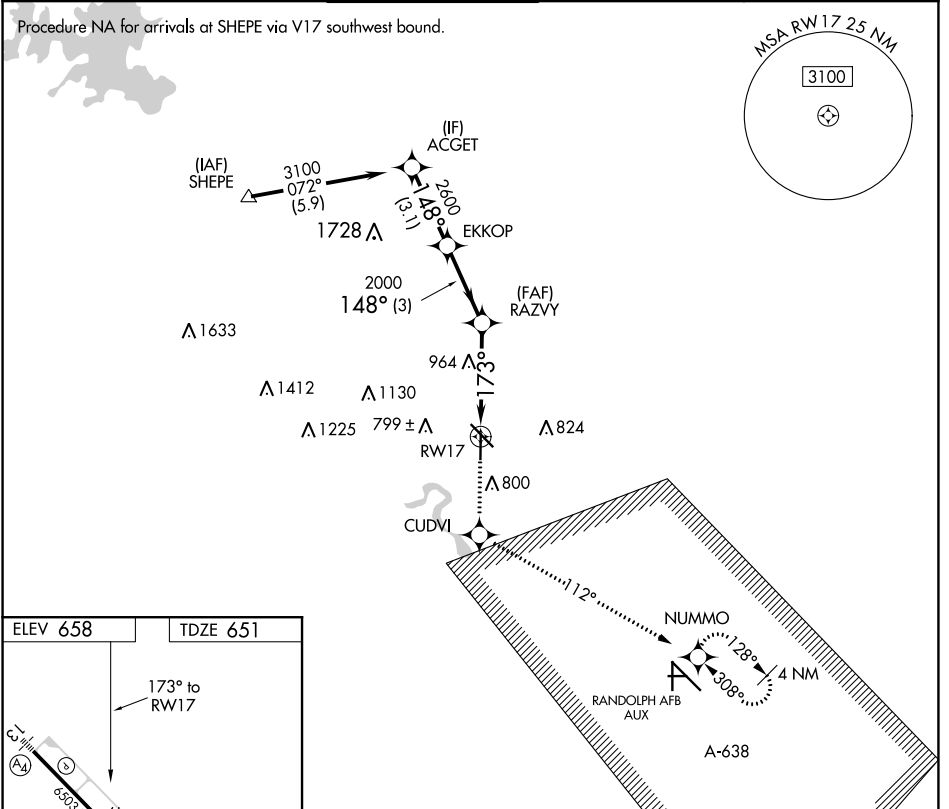
APP CRS	Rwy Idg	4842
173°	TDZE	651
	Apt Elev	658

RNAV (GPS) RWY 17

NEW BRAUNFELS RGNL (BAZ)

RNP APCH.	MISSED APPROACH: Climb to 3500 direct CUDVI and via 112° track to NUMMO and hold, continue climb-in-hold to 3500.
<p>▼ When local altimeter setting not received, use San Marcos Rgnl altimeter setting and increase all MDAs 60 feet and visibility Cat C ¼ SM. VDP NA when using San Marcos Rgnl altimeter setting.</p>	

ATIS 119.325	SAN ANTONIO APP CON 124.45 335.625	NEW BRAUNFELS TOWER ★ 127.05 285.4	GND CON 120.175	CLNC DEL 134.75	UNICOM 122.7	CTAF 127.05 ①
------------------------	----------------------------------------------	----------------------------------------------	---------------------------	---------------------------	------------------------	-------------------------



3500	CUDVI	NUMMO	ACGET
↑	✧	✧	
	Ir 112°		
		RAZVY	EKKOP
	1.6 NM to RWY 17	2000	3100
	3.03° TCH 45	173°	148°
	1.6 NM	2.5 NM	3 NM
			3.1 NM
CATEGORY	A	B	C
LNAV MDA	1220-1	569 (600-1)	1220-1½ 569 (600-1½)
			1220-1¾ 569 (600-1¾)

SC-3, 25 FEB 2021 to 25 MAR 2021

SC-3, 25 FEB 2021 to 25 MAR 2021