

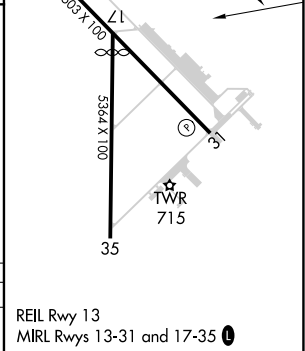
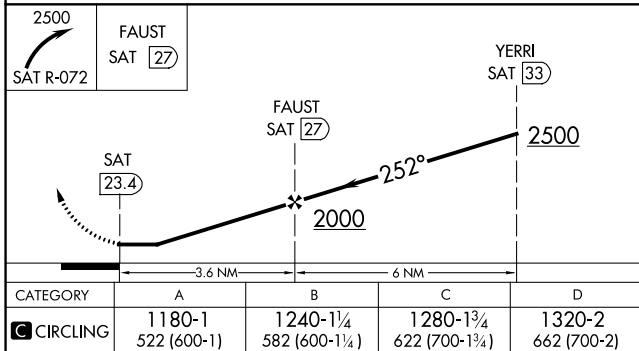
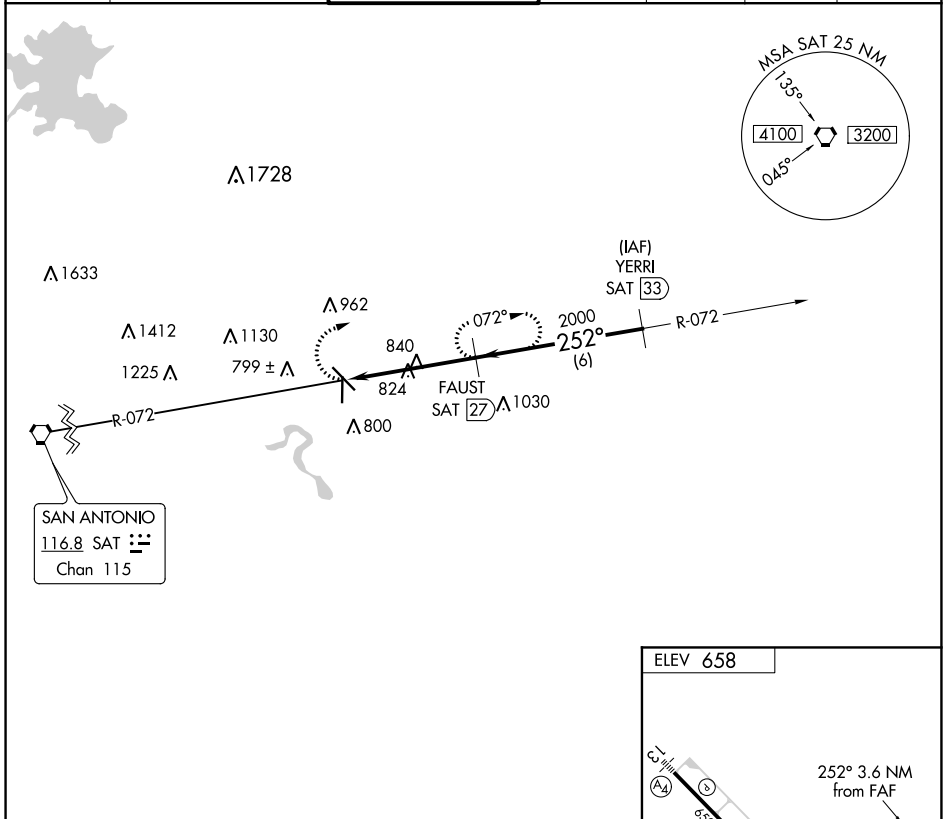
VORTAC SAT <b>116.8</b> Chan <b>115</b>	APP CRS <b>252°</b>	Rwy Idg TDZE Apt Elev <b>N/A</b> <b>N/A</b> <b>658</b>
---	------------------------	---

**VOR/DME-A**  
NEW BRAUNFELS RGNL (B.A.Z)

RADAR required for procedure entry.

MISSED APPROACH: Climbing right turn to 2500 on SAT R-072 to FAUST/27 DME and hold.

ATIS <b>119.325</b>	SAN ANTONIO APP CON <b>124.45 335.625</b>	NEW BRAUNFELS TOWER * <b>127.05 285.4</b>	GND CON <b>120.175</b>	CLNC DEL <b>134.75</b>	UNICOM <b>122.7</b>	CTAF <b>127.05</b> <b>0</b>
------------------------	--	--	---------------------------	---------------------------	------------------------	--------------------------------



CATEGORY	A	B	C	D
<b>CIRCLING</b>	1180-1 522 (600-1)	1240-1¼ 582 (600-1¼)	1280-1¾ 622 (700-1¾)	1320-2 662 (700-2)

NEW BRAUNFELS, TEXAS  
Orig-A 08NOV18

29°42'N-98°02'W

NEW BRAUNFELS RGNL (B.A.Z)  
**VOR/DME-A**

SC-3, 25 FEB 2021 to 25 MAR 2021

SC-3, 25 FEB 2021 to 25 MAR 2021