

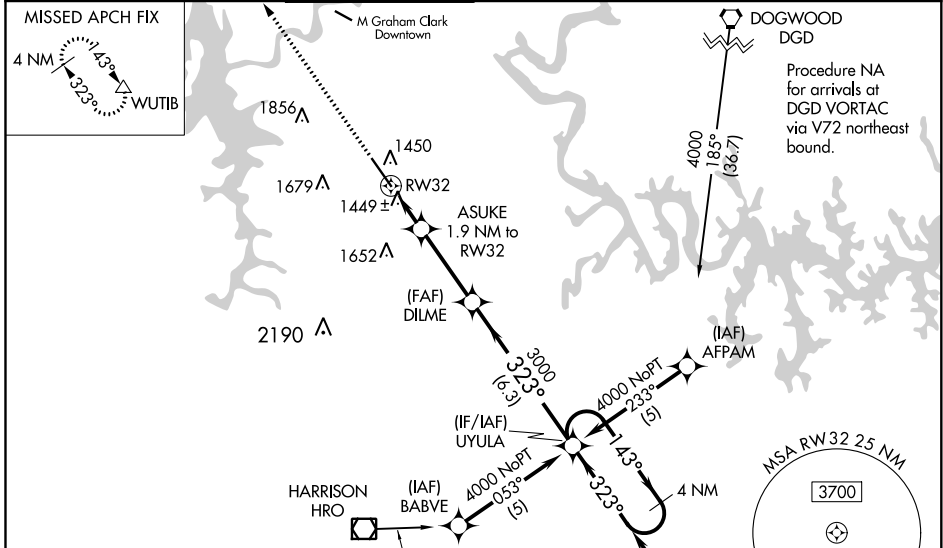
WAAS CH <b>93911</b> <b>W32A</b>	APP CRS <b>323°</b>	Rwy Idg <b>7140</b> TDZE <b>1302</b> Apt Elev <b>1303</b>
--	------------------------	---

# RNAV (GPS) RWY 32

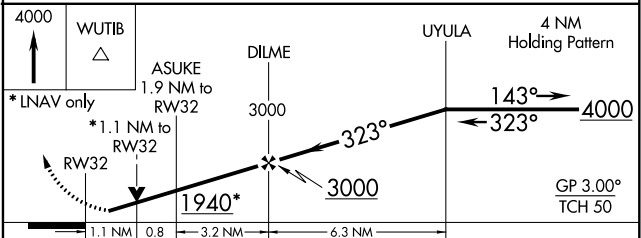
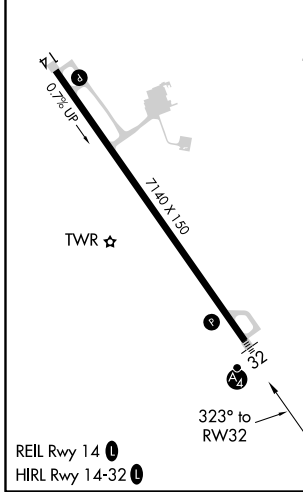
BRANSON (BBG)

<p><b>⚠</b> DME/DME RNP-0.3 NA. When local altimeter setting not received, use Harrison altimeter setting and increase all DA 47 feet and all MDA 60 feet. Increase LNAV/VNAV all Cats visibility ¼ mile, LNAV Cat C visibility ½ mile, Cat D visibility ¼ mile, and Circling Cat D visibility ¼ mile. VDP and Baro-VNAV NA when using Harrison altimeter setting. For uncompensated Baro-VNAV systems, LNAV/VNAV NA below -17°C (2°F) or above 46°C (114°F). Inoperative table does not apply.</p>	<p>MALSF</p>	<p>MISSED APPROACH: Climb to 4000 direct WUTIB and hold.</p>
	<p><b>⚠</b></p>	

ATIS <b>124.625</b>	SPRINGFIELD APP CON <b>126.35</b>	BRANSON TOWER * <b>128.15 (CTAF) 0</b>	GND CON <b>118.4</b>	CLNC DEL <b>118.4</b>	SPRINGFIELD CLNC DEL <b>126.35</b> (When tower closed)	UNICOM <b>122.95</b>
------------------------	--------------------------------------	---	-------------------------	--------------------------	--	-------------------------



ELEV 1303	<b>D</b>	TDZE 1302
-----------	----------	-----------



CATEGORY	A	B	C	D
LPV DA	1502-1		200 (200-1)	
LNAV/VNAV DA	1757-1½		455 (500-1½)	
LNAV MDA	1700-1		398 (400-1)	
CIRCLING	1760-1 457 (500-1)	1780-1 477 (500-1)	1780-1½ 477 (500-1½)	1700-1¼ 398 (400-1¼)
				2000-2¼ 697 (700-2¼)

NC-3, 25 FEB 2021 to 25 MAR 2021

NC-3, 25 FEB 2021 to 25 MAR 2021