

# TUXXI THREE ARRIVAL

WEST PALM BEACH, FLORIDA

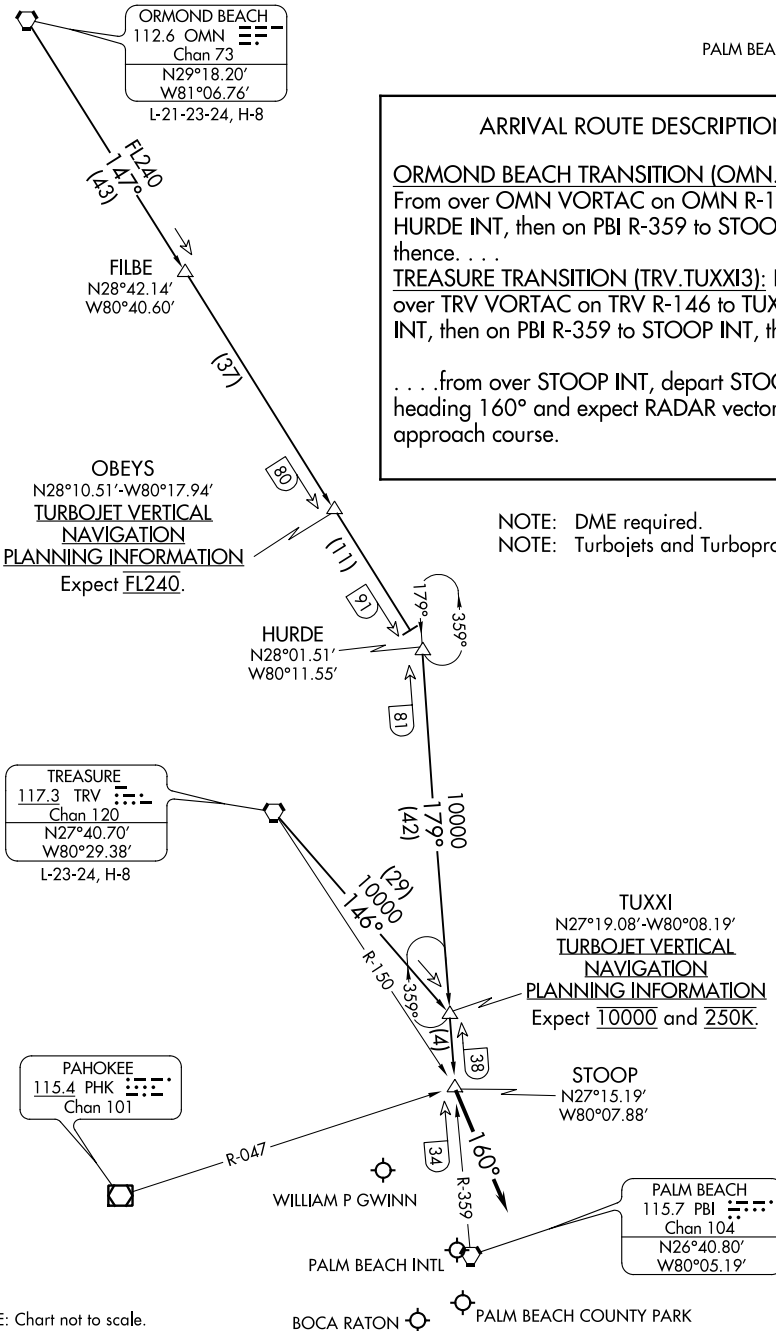
PBI D-ATIS  
123.75  
PALM BEACH APP CON  
128.3 317.4

**ARRIVAL ROUTE DESCRIPTION**

ORMOND BEACH TRANSITION (OMN.TUXXI3):  
From over OMN VORTAC on OMN R-147 to HURDE INT, then on PBI R-359 to STOOP INT, thence. . . .

TREASURE TRANSITION (TRV.TUXXI3):  
From over TRV VORTAC on TRV R-146 to TUXXI INT, then on PBI R-359 to STOOP INT, thence. . . .

. . . .from over STOOP INT, depart STOOP INT heading 160° and expect RADAR vectors to final approach course.



**TURBOJET VERTICAL NAVIGATION**  
PLANNING INFORMATION  
Expect FL240.

NOTE: DME required.  
NOTE: Turbojets and Turboprops only.

**TURBOJET VERTICAL NAVIGATION**  
PLANNING INFORMATION  
Expect 10000 and 250K.

NOTE: Chart not to scale.

SE-3, 25 FEB 2021 to 25 MAR 2021

SE-3, 25 FEB 2021 to 25 MAR 2021

# TUXXI THREE ARRIVAL

WEST PALM BEACH, FLORIDA