

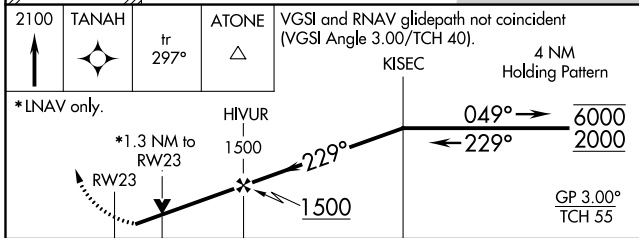
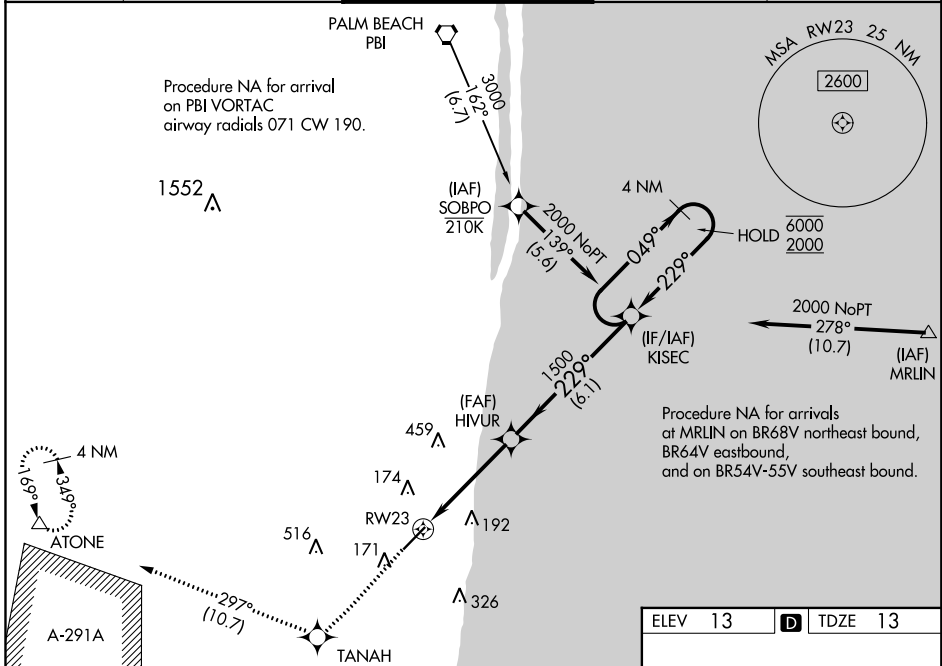
WAAS CH 42801 W23A	APP CRS 229°	Rwy Idg TDZE Apt Elev	5898 13 13
--	------------------------	-----------------------------	---------------------------------------

RNAV (GPS) Y RWY 23

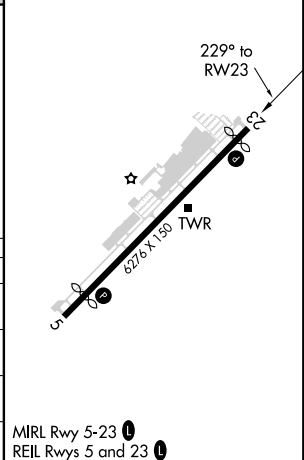
BOCA RATON (BCT)

RNP APCH.	MISSED APPROACH: Climb to 2100 direct TANAH and on track 297° to ATONE and hold.
<p>▼ Rwy 23 helicopter visibility reduction below ¾ SM NA. For uncompensated Baro-VNAV systems, procedure NA below -15°C or above 54°C. In minimum visibility conditions, bright lights on highway ¼ mile north of airport may be mistaken as runway lights.</p>	

AWOS-3 121.125	PALM BEACH APP CON 125.2 343.6	BOCA RATON TOWER ★ 118.425 (CTAF) 0	GND CON 121.8	CLNC DEL 121.8
--------------------------	--	---	-------------------------	--------------------------



ELEV 13	D TDZE 13
---------	------------------



CATEGORY	A	B	C	D
LPV DA	263-7/8 250 (300-7/8)			
LNAV/DA	357-1 1/8 344 (400-1 1/8)			
LNAV MDA	480-1 467 (500-1)	480-1 3/8 467 (500-1 3/8)		
C CIRCLING	680-1 667 (700-1)	680-1 3/4 667 (700-1 3/4)	880-2 3/4 867 (900-2 3/4)	

SE-3, 25 FEB 2021 to 25 MAR 2021

SE-3, 25 FEB 2021 to 25 MAR 2021