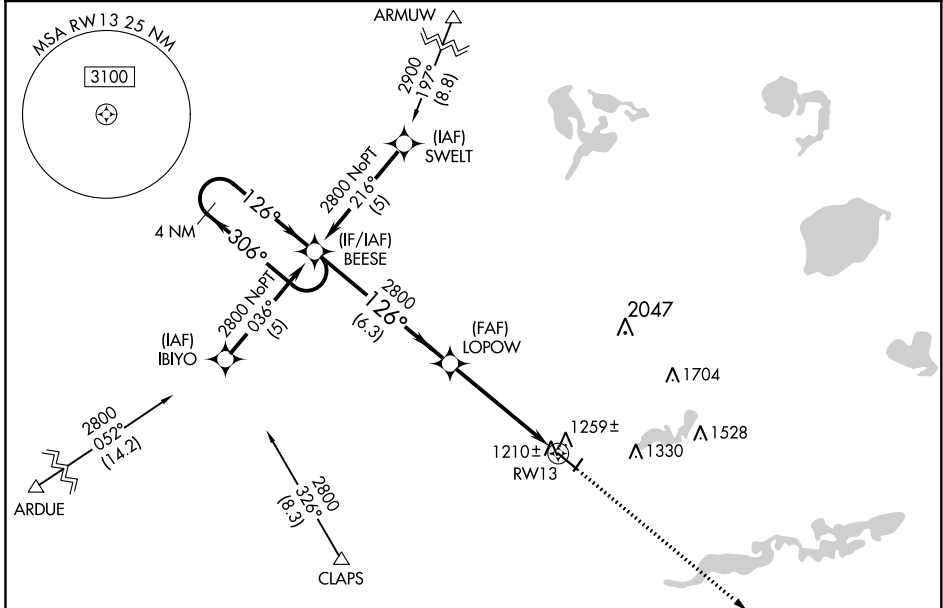


WAAS CH <b>93902</b> <b>W13A</b>	APP CRS <b>126°</b>	Rwy Idg TDZE <b>1124</b> Apt Elev <b>1126</b>	<b>5500</b>
--	------------------------	---	-------------

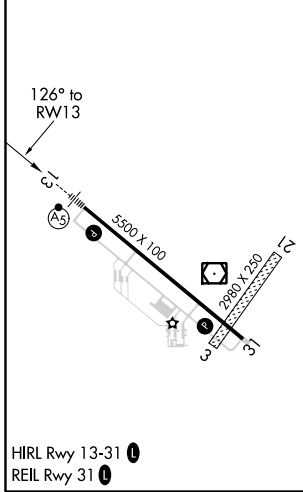
**RNAV (GPS) RWY 13**  
WILLMAR MUNI-JOHN L RICE FIELD (BDH)

RNP APCH.	MALSR 	MISSED APPROACH: Climb to 2800 direct HEPIV and hold.
 If local altimeter setting not received, use Olivia Rgnl altimeter setting and increase all DAs/MDAs 60 feet. For uncompensated Baro-VNAV systems, LNAV/VNAV NA below -17°C or above 46°C. Baro-VNAV and VDP NA when using Olivia Rgnl altimeter setting. Circling Rwy 3, 21 NA.		

AWOS-3 <b>113.7</b>	MINNEAPOLIS CENTER <b>125.5 323.1</b>	UNICOM <b>122.8 (CTAF) 0</b>
------------------------	--	---------------------------------



ELEV 1126	TDZE 1124
-----------	-----------



4 NM Holding Pattern	BEESE	LOPOW	2800 HEPIV	
	← 306°	→ 126°	↑ 2800	
2800	← 126°	→ 2800	*1.4 NM to RWY 13	
GP 3.00°	6.3 NM		*LNAV only	
TCH 52	3.6 NM	1.4 NM	RWY 13	
CATEGORY	A	B	C	D
LPV DA	1387-1		263 (300-1)	
LNAV/VNAV DA	1480-1¼		356 (400-1¼)	
LNAV MDA	1620-1	496 (500-1)	1620-1¼	1620-1½
			496 (500-1¼)	496 (500-1½)
CIRCLING	1620-1	494 (500-1)	1620-1½	1680-2
			494 (500-1½)	554 (600-2)

NC-1, 25 FEB 2021 to 25 MAR 2021

NC-1, 25 FEB 2021 to 25 MAR 2021