

APP CRS	Rwy Idg	4000
267°	TDZE	320
	Apt Elev	321

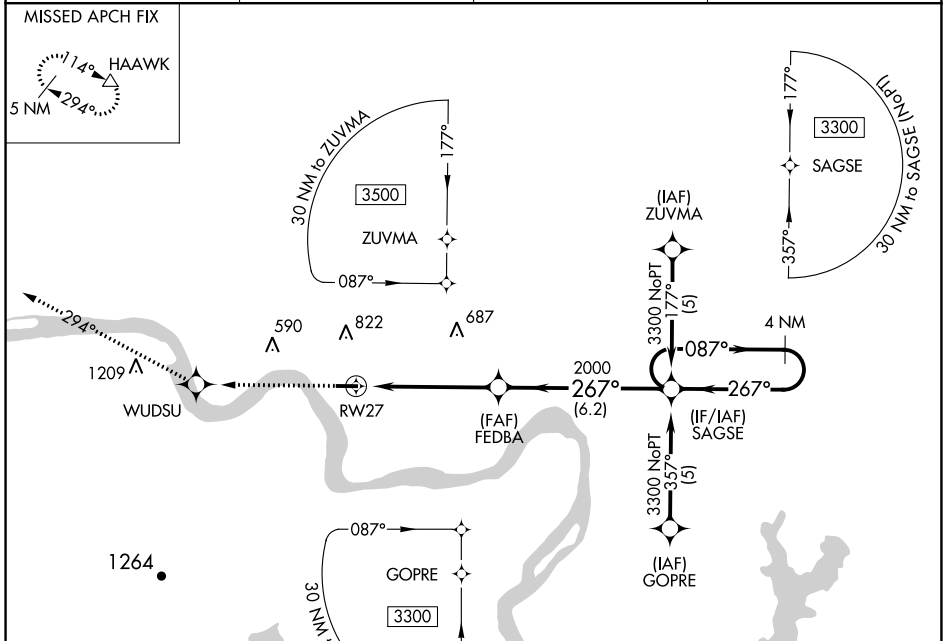
RNAV (GPS) RWY 27

MORRILTON MUNI (BDQ)

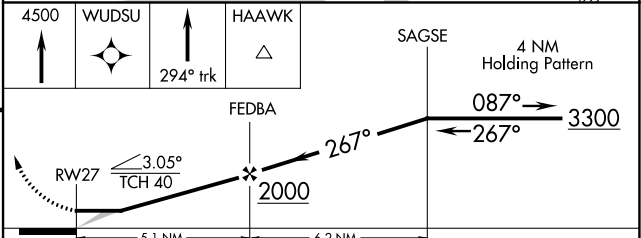
▽ DME/DME RNP-0.3 NA. Use Russellville altimeter setting, when not received, use Little Rock altimeter setting.

△ NA MISSED APPROACH: Climb to 4500 direct WUDSU and via 294° track to HAAWK and hold.

RUE AWOS 132.475	MEMPHIS CENTER 128.475 377.15	UNICOM 122.8 (CTAF)	122.9 0
----------------------------	---	-------------------------------	-----------------------



ELEV 321	TDZE 320
----------	----------



CATEGORY	A	B	C	D
LNAV MDA	1060-1	740 (800-1)	NA	
CIRCLING	1060-1 739 (800-1)	1200-1¼ 879 (900-1¼)	NA	

SC-1, 25 FEB 2021 to 25 MAR 2021

SC-1, 25 FEB 2021 to 25 MAR 2021