

APP CRS	Rwy Idg	<b>4887</b>
<b>175°</b>	TDZE	<b>707</b>
	Apt Elev	<b>719</b>

# RNAV (GPS) RWY 17

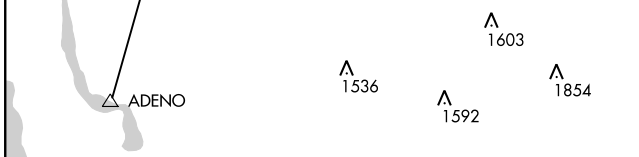
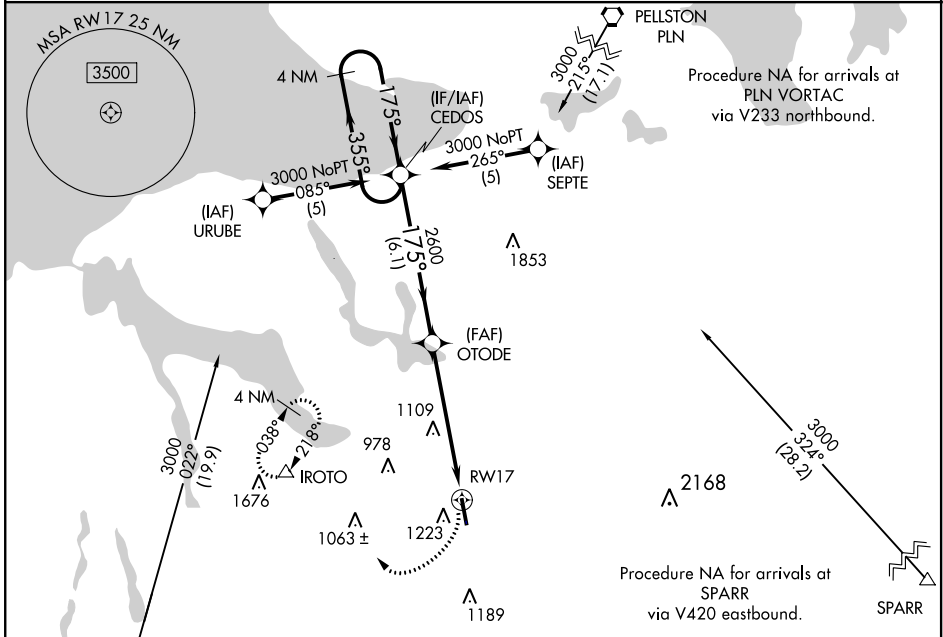
BOYNE MOUNTAIN (BFA)

RNP APCH

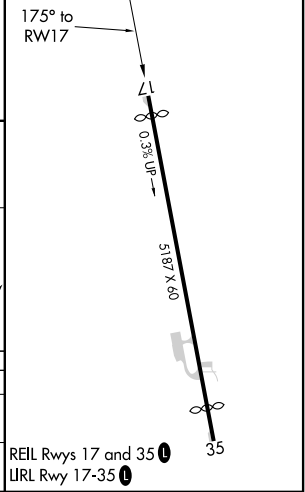
⚠️ NA Circling NA west of Rwy 17-35. Use Bellaire altimeter setting; when not received, use Pellston altimeter setting and increase all MDAs 20 feet and increase LNAV Cats A, C, and D visibility ¼ mile, and Circling Cats A and C ¼ mile. Rwy 17 helicopter visibility reduction below 1 SM NA. Procedure NA at night.

MISSED APPROACH: Climbing right turn to 3000 direct IROTO and hold.

MINNEAPOLIS CENTER <b>134.6 354.05</b>	UNICOM <b>122.8 (CTAF)</b>	<b>122.85</b>
---	-------------------------------	---------------



ELEV 719	TDZE 707
----------	----------



4 NM Holding Pattern	CEDOS	3000	IROTO
3000	175°	175°	OTODE
		2600	RWY 17
	6.1 NM	5.7 NM	
		3.05°	TCH 40

CATEGORY	A	B	C	D
LNAV MDA	1580 - 1 873 (900-1)	1580 - 1¼ 873 (900-1¼)	1580 - 2½ 873 (900-2½)	1580 - 2¾ 873 (900-2¾)
CIRCLING	1580 - 1 861 (900-1)	1580 - 1¼ 861 (900-1¼)	1580 - 2½ 861 (900-2½)	1640 - 3 921 (1000-3)

REL Rwy 17 and 35   
URL Rwy 17-35

EC-1, 25 FEB 2021 to 25 MAR 2021

EC-1, 25 FEB 2021 to 25 MAR 2021