

WAAS CH <b>72919</b> <b>W14A</b>	APP CRS <b>145°</b>	Rwy Idg TDZE Apt Elev	<b>6306</b> <b>2119</b> <b>2143</b>
--	------------------------	-----------------------------	---

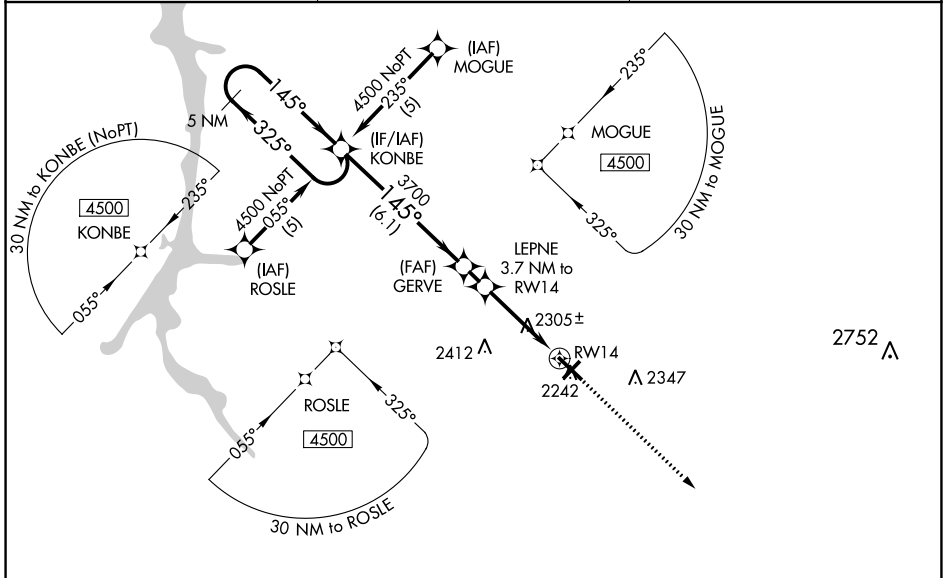
# RNAV (GPS) RWY 14

BRADFORD RGNL (BFD)

**⚠** For uncompensated Baro-VNAV systems, LNAV/VNAV NA below -19°C (-2°F) or above 53°C (129°F). Baro-VNAV and VDP NA when using St. Marys altimeter setting. DME/DME RNP-0.3 NA. Helicopter visibility reduction below 3/4 SM NA. When local altimeter setting not received, use St. Marys altimeter setting; increase LPV DA to 2454 feet and LNAV/VNAV DA to 2602 feet and all MDA 100 feet; increase LPV all Cats visibility 1/8 mile and LNAV/VNAV all Cats visibility and LNAV Cats C/D visibility 1/4 mile; increase Circling Cat C visibility 1/8 mile.

**MISSED APPROACH:**  
Climb to 4500 direct NIMEE and hold.

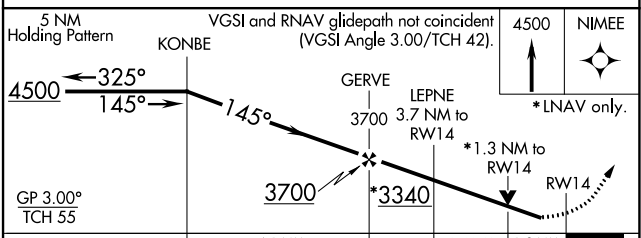
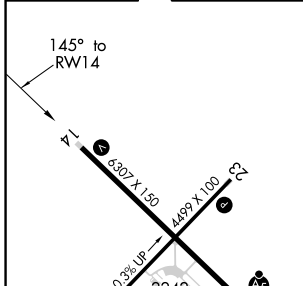
ASOS <b>133.825</b>	CLEVELAND CENTER <b>124.325 353.85</b>	UNICOM <b>123.075 (CTAF) 0</b>
------------------------	---	-----------------------------------



NE-4, 25 FEB 2021 to 25 MAR 2021

NE-4, 25 FEB 2021 to 25 MAR 2021

ELEV 2143	<b>D</b>	TDZE 2119
-----------	----------	-----------



CATEGORY	A	B	C	D
LPV DA		2369-1	250 (300-1)	
LNAV/ VNAV DA		2517-1 <sup>3</sup> / <sub>8</sub>	398 (400-1 <sup>3</sup> / <sub>8</sub> )	
LNAV MDA	2560-1	441 (500-1)	2560-1 <sup>3</sup> / <sub>8</sub>	441 (500-1 <sup>3</sup> / <sub>8</sub> )
CIRCLING	2620-1	477 (500-1)	2620-1 <sup>1</sup> / <sub>2</sub>	2700-2
			477 (500-1 <sup>1</sup> / <sub>2</sub> )	557 (600-2)