

VORTAC BFF <b>112.6</b> Chan <b>73</b>	APP CRS <b>245°</b>	Rwy Idg TDZE Apt Elev	<b>8002</b> <b>3967</b> <b>3967</b>
--	------------------------	-----------------------------	---

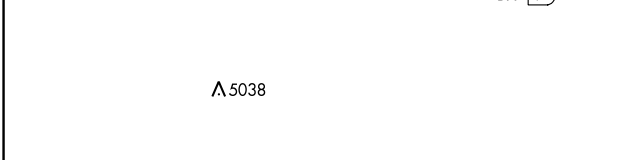
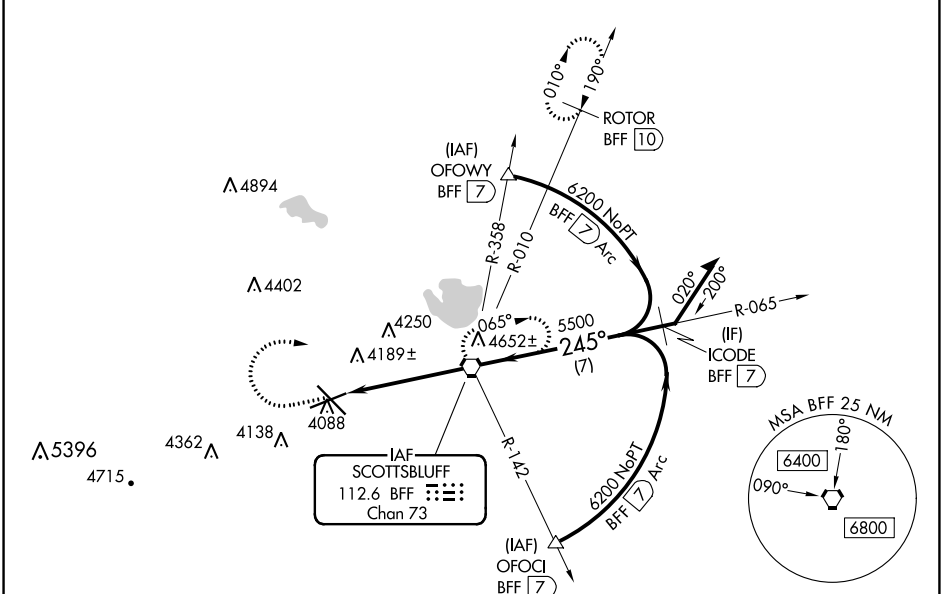
# VOR or TACAN RWY 23

WESTERN NEBRASKA RGNL/WILLIAM B HEILIG FIELD (BFF)

**⚠** When local altimeter setting not received, use Alliance altimeter setting: increase all MDAs 100 feet and visibility Cats C and D ½ SM. VDP NA when using Alliance altimeter setting. Visibility reduction by helicopters NA.

**MISSED APPROACH:** Climb to 5000 then climbing right turn to 6500 direct BFF VORTAC and hold (TACAN aircraft continue climb to 7300 via BFF R-010 to ROTOR 10 DME and hold north, right turn 190° inbound).

ASOS <b>121.025</b>	DENVER CENTER <b>127.95 338.2</b>	UNICOM <b>123.0 (CTAF) 0</b>
------------------------	--------------------------------------	---------------------------------



ELEV 3967	<b>D</b> TDZE 3967
-----------	--------------------

HIRL Rwy 12-30	<b>0</b>
MIRL Rwy 5-23	<b>0</b>
FAF to MAP 4.7 NM	
Knots	60 90 120 150 180
Min:Sec	4:42 3:08 2:21 1:53 1:34

	5000	6500	BFF	
	↑	↷	⬡	
	BFF VORTAC			
	Remain within 10 NM			
	065°			
	245°			
	6200			
	5500			
	1.5 NM 3.1 NM			
CATEGORY	A	B	C	D
S-23	4500-1	533 (600-1)	4500-1½ 533 (600-1½)	4500-1¾ 533 (600-1¾)
<b>C</b> CIRCLING	4500-1	533 (600-1)	4560-1½ 593 (600-1½)	4740-2½ 773 (800-2½)

# VOR or TACAN RWY 23

NC-2, 25 FEB 2021 to 25 MAR 2021

NC-2, 25 FEB 2021 to 25 MAR 2021