

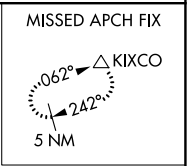
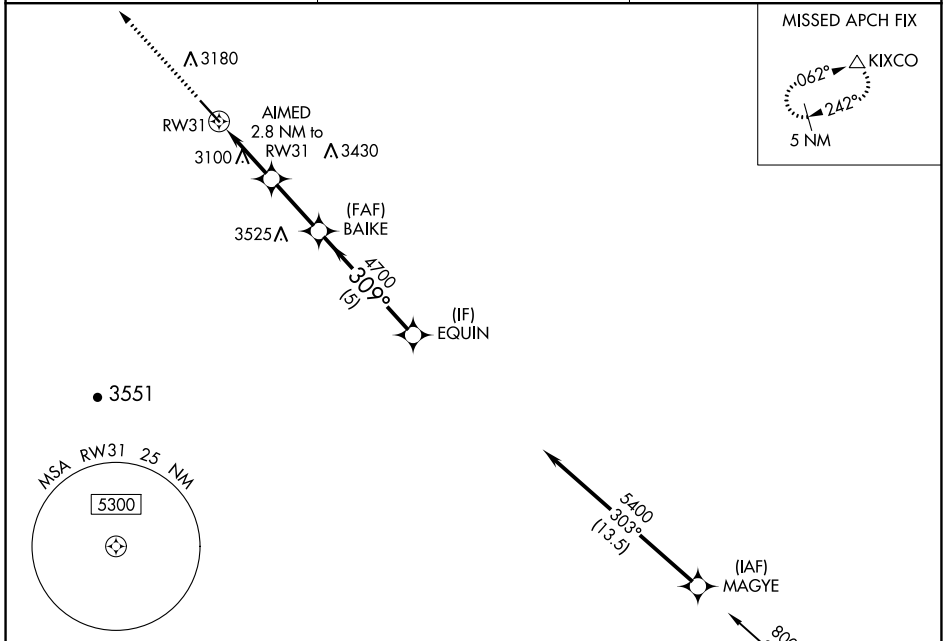
WAAS CH 50138 W31A	APP CRS 309°	Rwy Idg TDZE Apt Elev	5904 2981 2981
--	------------------------	-----------------------------	---

RNAV (GPS) RWY 31

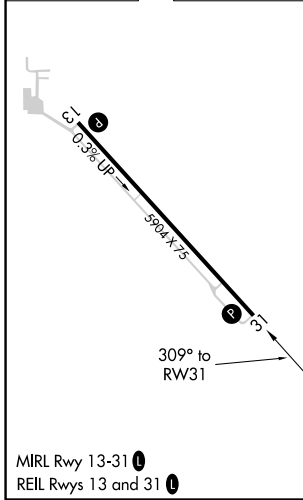
BAKER MUNI (BHK)

RNP APCH.	MISSED APPROACH: Climb to 3500 then climbing right turn 6000 direct KIXCO and hold.
	For uncompensated Baro-VNAV systems, LNAV/VNAV NA below -27°C or above 54°C. When local altimeter setting not received, procedure NA.

ASOS 135.475	SALT LAKE CENTER 126.85 305.2	CTAF 122.9 0
------------------------	---	------------------------

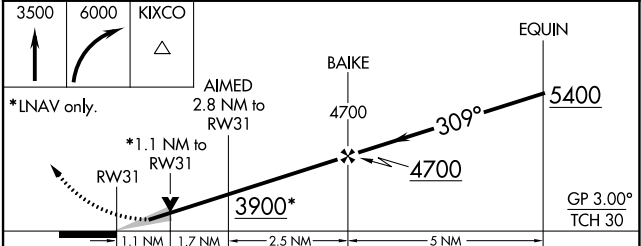


ELEV 2981	TDZE 2981
------------------	------------------



MIRL Rwy 13-31
REL Rwy 13 and 31

Procedure NA for arrivals at DIXLE on V491 southbound and on V120 eastbound.



CATEGORY	A	B	C	D
LPV DA		3231-7/8	250 (300-7/8)	
LNAV/VNAV DA		3267-1	286 (300-1)	
LNAV MDA		3360-1	379 (400-1)	
CIRCLING	3540-1	559 (600-1)	3620-1 3/4 639 (700-1 3/4)	3820-2 3/4 839 (900-2 3/4)

NW-1, 25 FEB 2021 to 25 MAR 2021

NW-1, 25 FEB 2021 to 25 MAR 2021