

LOC/DME I-BXO 111.3 Chan 50	APP CRS 183°	Rwy Idg TDZE 644 Apt Elev 650	7099 644 650
-------------------------------------------------	------------------------	---------------------------------------------------	-----------------------------------------

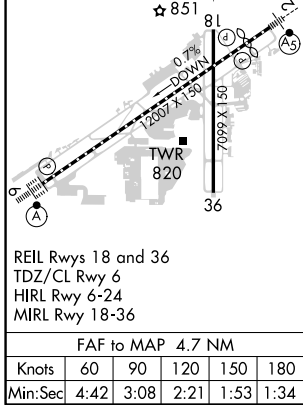
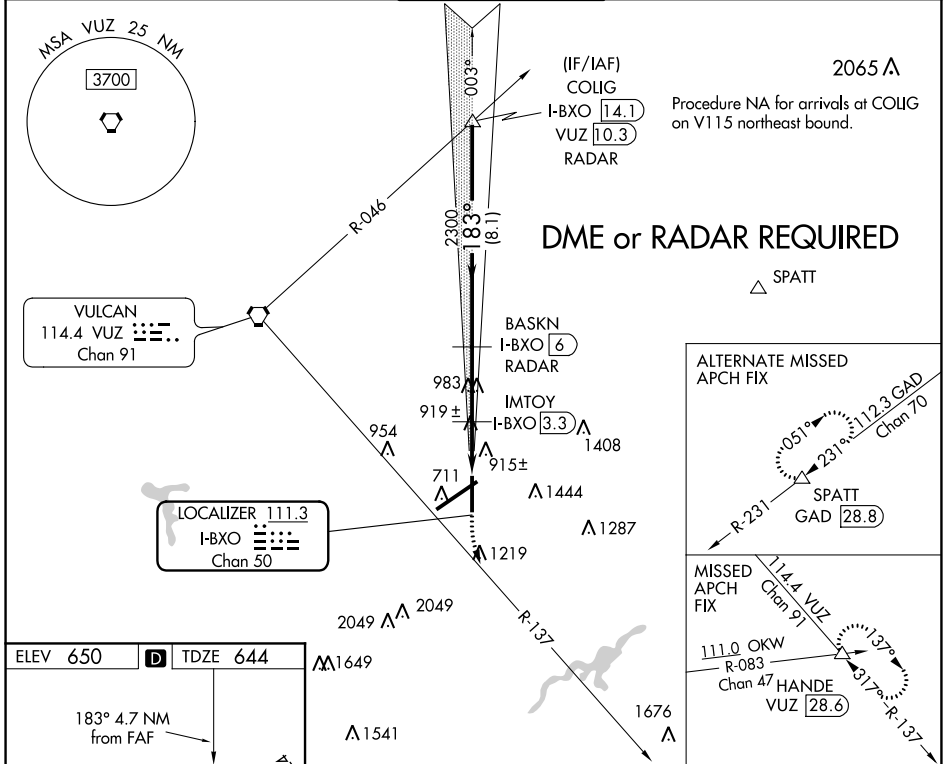
LOC RWY 18

BIRMINGHAM-SHUTTLESWORTH INTL (BHM)

▼ Rwy 18 helicopter visibility reduction below 3/4 SM NA. DME or RADAR required.

MISSED APPROACH: Climb to 1500 then climbing left turn to 3800 on VUZ VORTAC R-137 to HANDE INT/VUZ 28.6 DME and hold.

ATIS 119.4 270.1	BIRMINGHAM APP CON 123.8 256.8	BIRMINGHAM TOWER 119.9 317.725	GND CON 121.7 348.6	CLNC DEL 125.675 305.2
----------------------------	------------------------------------------	------------------------------------------	-------------------------------	----------------------------------



ELEV 650	D	TDZE 644				
183° 4.7 NM from FAF	81	81	1500	3800	HANDE	COLIG I-BXO 14.1 RADAR
0.7% DOWN	1200 x 150	7099 x 150	1500	3800	VUZ R-137	BASKN I-BXO 6 RADAR
TWR 820	36	36	1500	3800	IMTOY I-BXO 3.3	COLIG I-BXO 14.1 RADAR
REIL Rws 18 and 36			1500	3800	I-BXO 2.8	COLIG I-BXO 14.1 RADAR
TDZ/CL Rwy 6			1500	3800	I-BXO 1.3	COLIG I-BXO 14.1 RADAR
HIRL Rwy 6-24			1500	3800	I-BXO 3.3	COLIG I-BXO 14.1 RADAR
MIRL Rwy 18-36			1500	3800	I-BXO 2.8	COLIG I-BXO 14.1 RADAR
FAF to MAP 4.7 NM			1500	3800	I-BXO 1.3	COLIG I-BXO 14.1 RADAR
Knots	60	90	120	150	180	COLIG I-BXO 14.1 RADAR
Min:Sec	4:42	3:08	2:21	1:53	1:34	COLIG I-BXO 14.1 RADAR
CATEGORY						
S-18	1380-1 736 (800-1)		1380-2 736 (800-2)			
IMTOY FIX MINIMUMS (DME REQUIRED)						
S-18	1200-1 556 (600-1)		1200-1½ 556 (600-1½)			

SE-4, 25 FEB 2021 to 25 MAR 2021

SE-4, 25 FEB 2021 to 25 MAR 2021