

APP CRS **058°** Rwy ldg **12007**  
 TDZE **606**  
 Apt Elev **650**

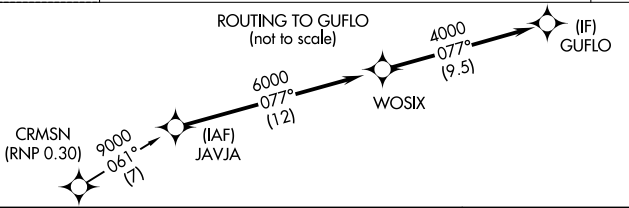
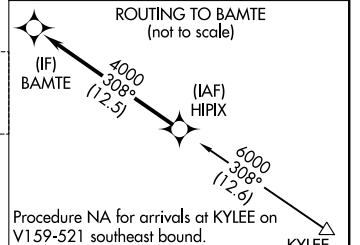
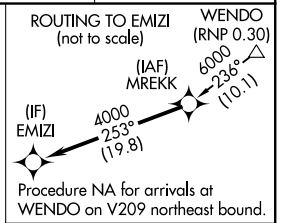
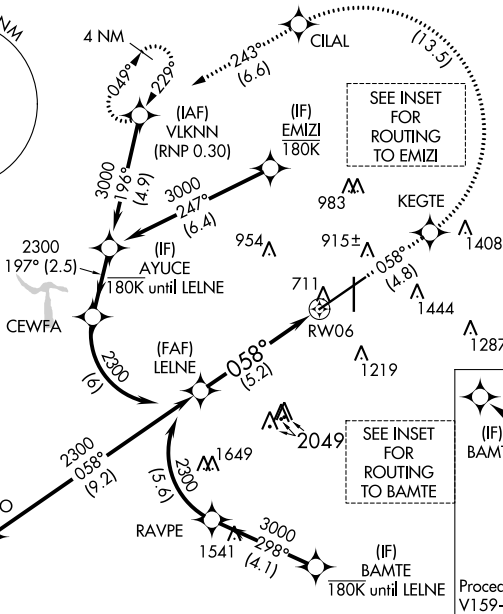
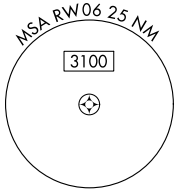
# RNAV (RNP) Z RWY 6

BIRMINGHAM-SHUTTLESWORTH INTL (BHM)

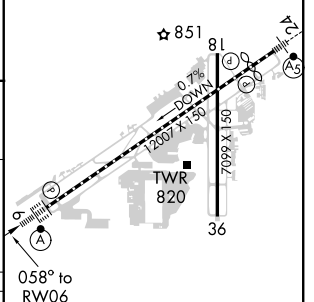
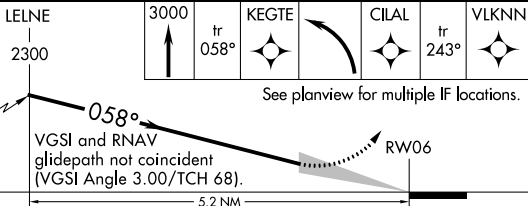
RNP AR APCH. RF required. **ALSF-2**  
 ▼ For uncompensated Baro-VNAV systems, procedure NA below -8°C or above 54°C.

**MISSED APPROACH:** Climb to 3000 on track 058° to KEGTE left turn to CILAL and track 243° to VLKNN and hold.

ATIS <b>119.4 270.1</b>	BIRMINGHAM APP CON <b>123.8 256.8</b>	BIRMINGHAM TOWER <b>119.9 317.725</b>	GND CON <b>121.7 348.6</b>	CLNC DEL <b>125.675 305.2</b>
----------------------------	--	--	-------------------------------	----------------------------------



ELEV 650 **D** TDZE 606



CATEGORY	A	B	C	D
RNP 0.30 DA		1138/55	532 (500-1)	

**AUTHORIZATION REQUIRED**

REIL Rwy 18 and 36  
 TDZ/CL Rwy 6  
 HIRL Rwy 6-24  
 MIRL Rwy 18-36

SE-4, 25 FEB 2021 to 25 MAR 2021

SE-4, 25 FEB 2021 to 25 MAR 2021