

BIRMINGHAM, ALABAMA

AL-50 (FAA)

19227

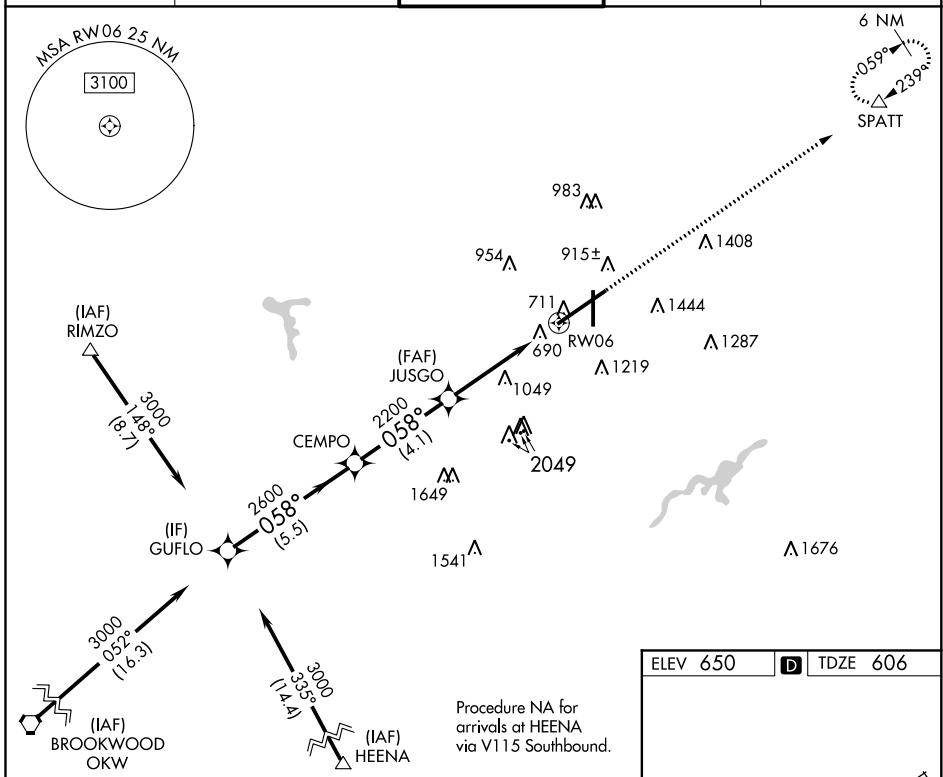
WAAS CH 82014 W06A	APP CRS 058°	Rwy ldg 12007 TDZE 606 Apt Elev 650
--	------------------------	--

RNAV (GPS) Y RWY 6

BIRMINGHAM-SHUTTLESWORTH INTL (BHM)

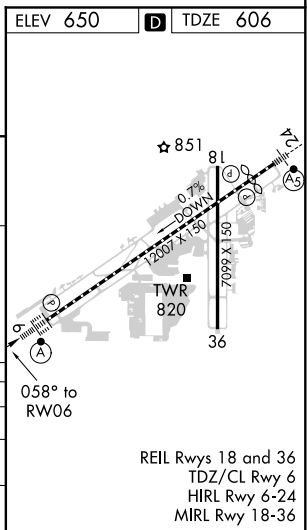
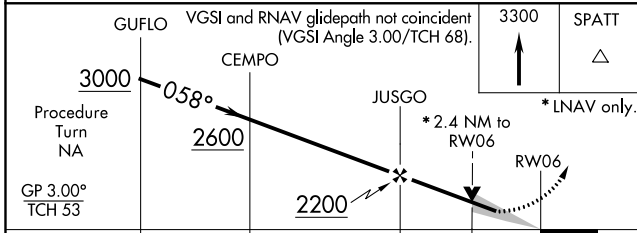
RNP APCH.	ALSF-2	MISSED APPROACH: Climb to 3300 direct SPATT and hold.
▼ For uncompensated Baro-VNAV systems, LNAV/VNAV NA below -16°C (4°F) or above 47°C (116°F).	⚠	

ATIS 119.4 270.1	BIRMINGHAM APP CON 123.8 256.8	BIRMINGHAM TOWER 119.9 317.725	GND CON 121.7 348.6	CLNC DEL 125.675 305.2
----------------------------	--	--	-------------------------------	----------------------------------



SE-4, 25 FEB 2021 to 25 MAR 2021

SE-4, 25 FEB 2021 to 25 MAR 2021



CATEGORY	A	B	C	D
LPV DA		806/18	200 (200-½)	
LNAV/VNAV DA		1120/60	514 (500-1¼)	
LNAV MDA	1440/24 834 (800-½)	1440/40 834 (800-¾)	1440-2 834 (800-2)	1440-2¼ 834 (800-2¼)

BIRMINGHAM, ALABAMA
Amdt 1C 13SEP18

BIRMINGHAM-SHUTTLESWORTH INTL (BHM)

RNAV (GPS) Y RWY 6

33°34'N-86°45'W