

VOR RWY 18

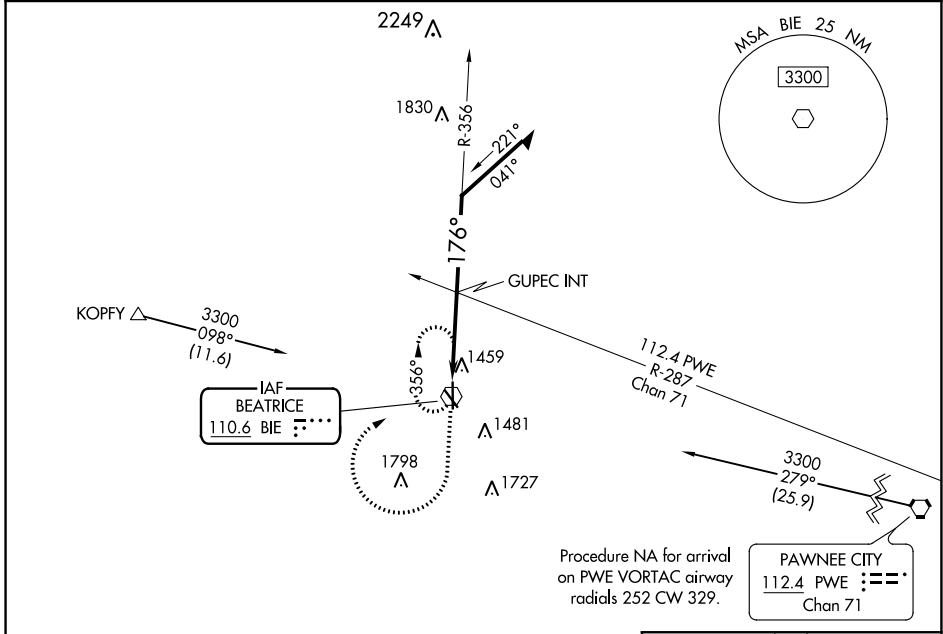
BEATRICE MUNI (BIE)

VOR BIE 110.6	APP CRS 176°	Rwy Idg TDZE Apt Elev	5602 1324 1324
-------------------------	------------------------	-----------------------------	---

⚠ Rwy 18 helicopter visibility reduction below 3/4 SM NA.

⚠ MISSED APPROACH: Climb to 3000 then climbing right turn to 3300 direct BIE VOR and hold.

AWOS-3 125.325	MINNEAPOLIS CENTER 126.4 317.7	UNICOM 122.8 (CTAF)
--------------------------	--	-------------------------------

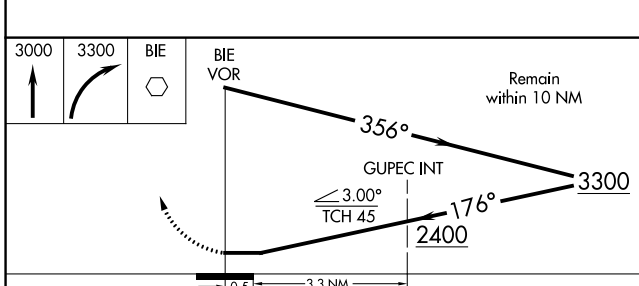


NC-2, 25 FEB 2021 to 25 MAR 2021

NC-2, 25 FEB 2021 to 25 MAR 2021

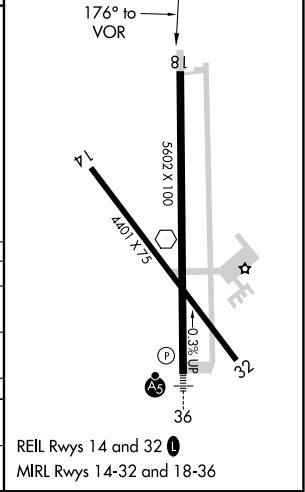
Procedure NA for arrival on PWE VORTAC airway radials 252 CW 329.

PAWNEE CITY
112.4 PWE Chan 71



ELEV 1324 TDZE 1324

CATEGORY	A	B	C	D
S-18	2400-1¼ 1076 (1100-1¼)	2400-1½ 1076 (1100-1½)	2400-3	1076 (1100-3)
C CIRCLING	2400-1¼ 1076 (1100-1¼)	2400-1½ 1076 (1100-1½)	2400-3	1076 (1100-3)
GUPEUC FIX MINIMUMS (DUAL VOR RECEIVERS REQUIRED)				
S-18	1760-1	436 (500-1)	1760-1¼	436 (500-1¼)
C CIRCLING	1820-1	496 (500-1)	2000-2 676 (700-2)	2100-2½ 776 (800-2½)



REIL Rwy 14 and 32
MIRL Rwy 14-32 and 18-36