

WAAS CH 49222 W08A	APP CRS 084°	Rwy Idg TDZE 698 Apt Elev 698
--	------------------------	---

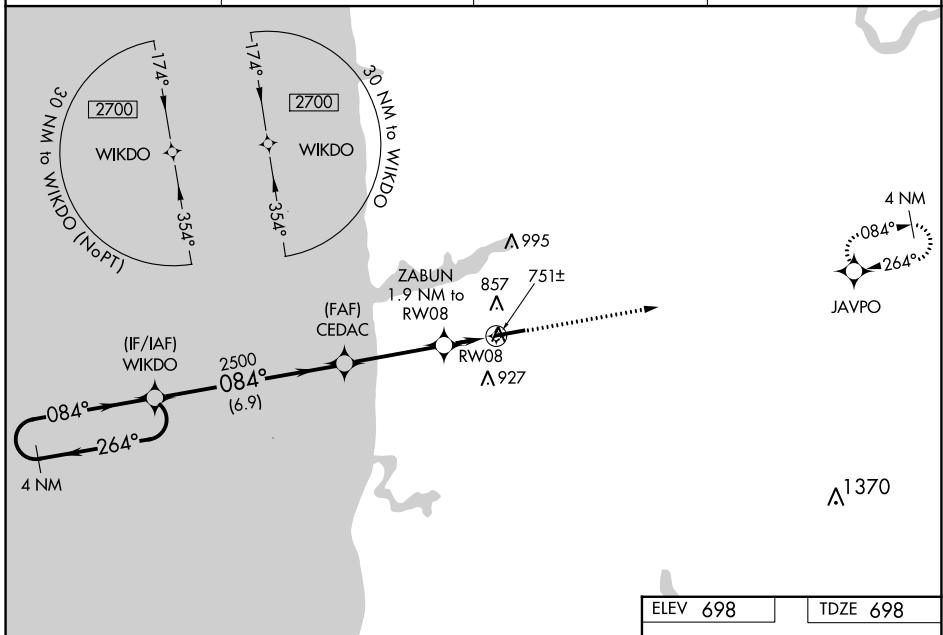
RNAV (GPS) RWY 8

WEST MICHIGAN RGNL (BIV)

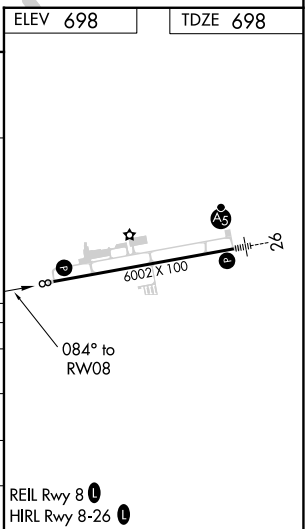
⚠ Baro-VNAV NA when using Muskegon County altimeter setting. For uncompensated Baro-VNAV systems, LNAV/VNAV NA below -1.6°C (4°F) or above 54°C (130°F). When local altimeter setting not received, use Muskegon County altimeter setting and increase LPV DA to 1018, increase LPV all Cats visibility ¼ mile; increase LNAV/VNAV DA to 1050, increase LNAV/VNAV all Cats visibility ⅓ mile; increase all MDA 80 feet, increase LNAV Cat C/D visibility ⅓ mile. DME/DME RNP-0.3 NA. VDP NA when using Muskegon County altimeter setting.

MISSED APPROACH:
Climb to 3000 direct JAVPO and hold.

ASOS 119.025	GREAT LAKES APP CON * 133.825 290.35	CLNC DEL 123.95	UNICOM 123.05 (CTAF) ①
------------------------	--	---------------------------	----------------------------------



4 NM Holding Pattern WIKDO	*LNAV only	3000	JAVPO	
2700 ← 264° / 084° →	CEDAC 2500	ZABUN 1.9 NM to RW08	1 NM to RW08	
GP 3.00° TCH 40	*1340			
6.9 NM	3.6 NM	0.9 NM	1 NM	
CATEGORY	A	B	C	D
LPV DA	948- 7/8		250 (300-7/8)	
LNAV/VNAV DA	980- 7/8		282 (300-7/8)	
LNAV MDA	1060-1		362 (400-1)	
CIRCLING	1200-1	502 (600-1)	1200-1½ 502 (600-1½)	1260-2 562 (600-2)



EC-1, 25 FEB 2021 to 25 MAR 2021

EC-1, 25 FEB 2021 to 25 MAR 2021