

PIKES TWO DEPARTURE

AL-5612 (FAA)

ROCKY MOUNTAIN METROPOLITAN (BJC)
DENVER, COLORADO

ATIS
126.25
CLNC DEL
132.6
DENVER DEP CON
126.1 360.75

**TOP ALTITUDE:
ASSIGNED BY ATC**

DENVER
117.9 DEN
Chan 126
N39°48.75'-W104°39.64'

TAKEOFF MINIMUMS

Rwys 3, 12L/R, 21, 30L/R: Standard.
NOTE: RADAR required.

SOLAR
N39°08.80'
W105°03.55'

ADANE
N38°54.95'
W104°23.94'

HUGO
112.1 HGO
Chan 58

BLACK FOREST
112.5 BRK
Chan 72

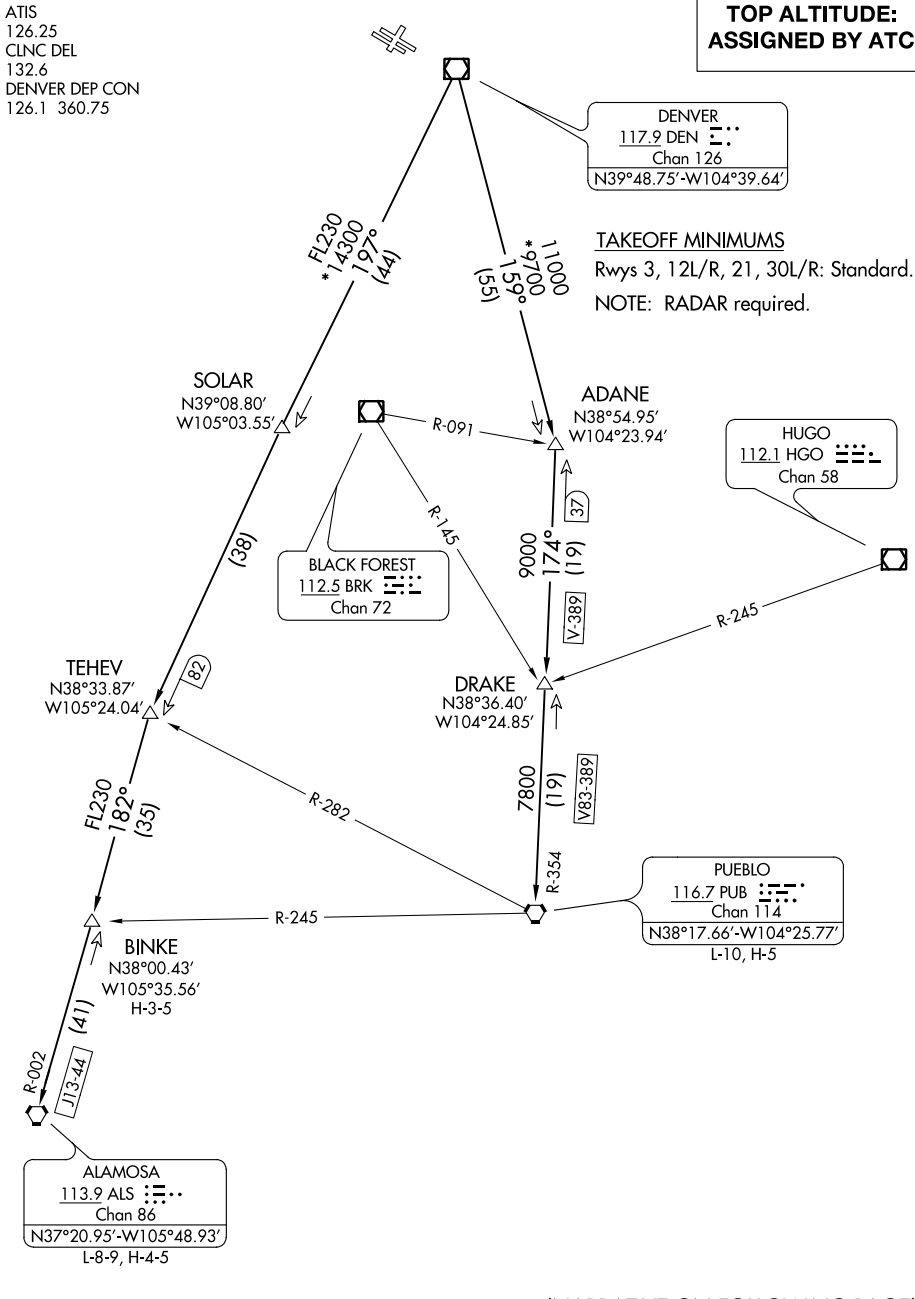
TEHEV
N38°33.87'
W105°24.04'

DRAKE
N38°36.40'
W104°24.85'

PUEBLO
116.7 PUB
Chan 114
L-10, H-5

BINKE
N38°00.43'
W105°35.56'
H-3-5

ALAMOSA
113.9 ALS
Chan 86
N37°20.95'-W105°48.93'
L-8-9, H-4-5



NOTE: Chart not to scale.

(NARRATIVE ON FOLLOWING PAGE)

PIKES TWO DEPARTURE

(PIKES2.DEN) 30JAN20

DENVER, COLORADO
ROCKY MOUNTAIN METROPOLITAN (BJC)

SW-1, 25 FEB 2021 to 25 MAR 2021

SW-1, 25 FEB 2021 to 25 MAR 2021