

WAAS CH 42508 W30A	APP CRS 295°	Rwy ldg 7002 TDZE 5628 Apt Elev 5673
---------------------------------	------------------------	---

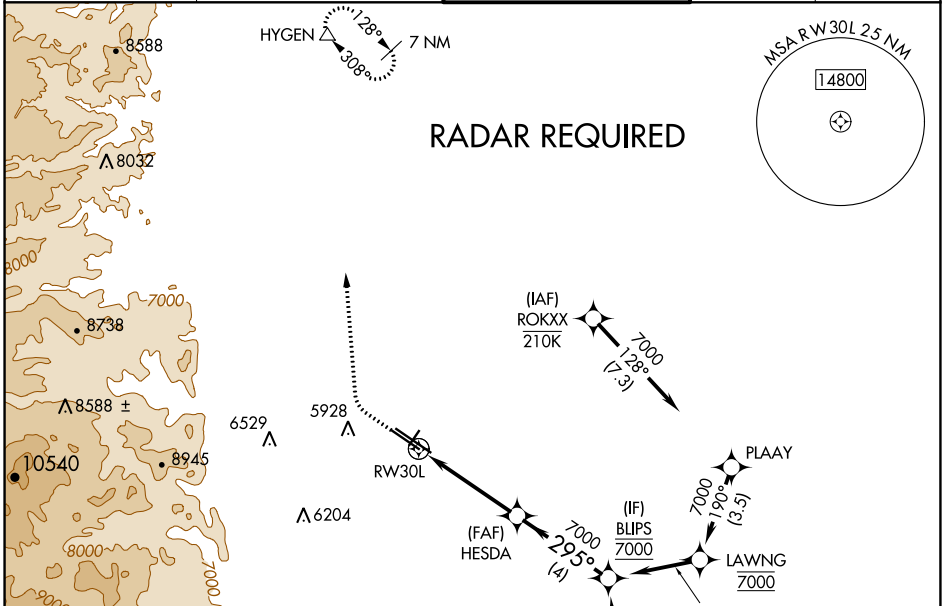
RNAV (GPS) RWY 30L

ROCKY MOUNTAIN METROPOLITAN (B.J.C)

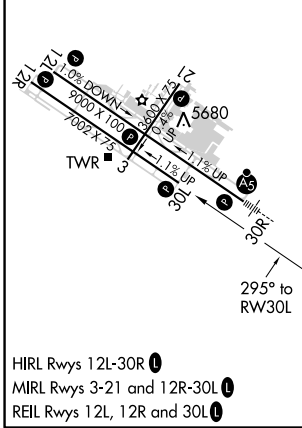
NA Baro-VNAV and VDP NA when using Denver Intl altimeter setting. For uncompensated Baro-VNAV systems, LNAV/VNAV NA below -26°C (-14°F) or above 47°C (116°F). DME/DME RNP-0.3 NA. When local altimeter setting not received, use Denver Intl altimeter setting and increase all DA 82 feet and all MDA 100 feet. Increase LPV all Cats, LNAV/VNAV all Cats, LNAV Cats C/D and Circling Cat C visibility ¼ mile.

MISSED APPROACH: Climb to 6300 then climbing right turn to 10300 direct HYGEM and hold, continue climb-in-hold to 10300.

ATIS 126.25	DENVER APP CON 126.1 360.75	METRO TOWER ★ 118.6 (CTAF) 0 233.7	GND CON 121.7	CLNC DEL 132.6
-----------------------	---------------------------------------	--	-------------------------	--------------------------



ELEV 5673	D	TDZE 5628
-----------	----------	-----------



	6300	10300	HYGEM	HESDA	BLIPS
	↑	↷	△	7000	7000
	*LNAV only.		*1 NM to RWY30L	295°	7000
	RWY30L		1 NM	3.3 NM	4 NM
CATEGORY	A		B	C	D
LPV DA	5828-¾		200 (200-¾)		
LNAV/VNAV DA	5926-1⅞		298 (300-1⅞)		
LNAV MDA	5960-1		332 (300-1)		
C CIRCLING	6180-1 507 (600-1)	6240-1 567 (600-1)	6360-2 687 (700-2)	6860-3 1187 (1200-3)	

GP 3.00°
TCH 41

SW-1, 25 FEB 2021 to 25 MAR 2021

SW-1, 25 FEB 2021 to 25 MAR 2021