

VOR/DME BJC 115.4 Chan 101	APP CRS 284°	Rwy Idg TDZE Apt Elev	30L 7002 5628 5673	30R 9000 5599 5673
-----------------------------------------	------------------------	-----------------------------	--------------------------------------------------	--------------------------------------------------

VOR/DME RWY 30L/R

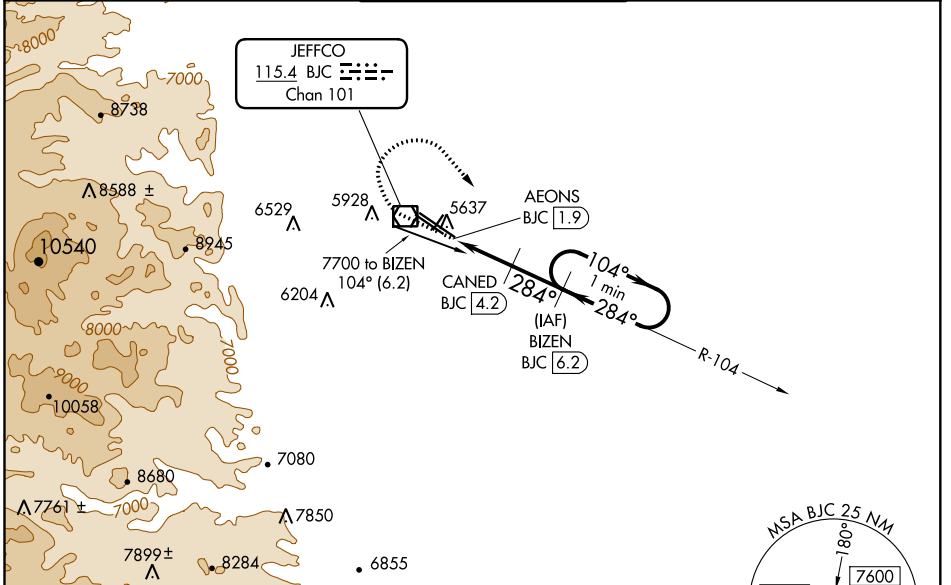
ROCKY MOUNTAIN METROPOLITAN (BJC)

NA When local altimeter setting not received, use Denver Intl altimeter setting and increase all MDA 100 feet. Increase S-30L Cats C/D visibility to 1 mile and Circling Cat C to 2 1/4 mile. For inoperative MALSR, increase S-30R all Cats visibility to 1 mile. For inoperative MALSR, when using Denver Intl altimeter setting, increase S-30R Cats C/D visibility to 1 1/2 mile.

MALSR Rwy 30R

MISSED APPROACH: Climb to 6100 then climbing right turn to 7000 on heading 150° and on BJC VOR/DME R-104 to BIZEN/BJC 6.2 DME and hold.

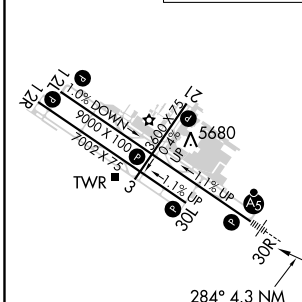
ATIS 126.25	DENVER APP CON 126.1 360.75	METRO TOWER * 118.6(CTAF) 233.7	GND CON 121.7	CLNC DEL 132.6
-----------------------	---------------------------------------	-------------------------------------------	-------------------------	--------------------------



SW-1, 25 FEB 2021 to 25 MAR 2021

SW-1, 25 FEB 2021 to 25 MAR 2021

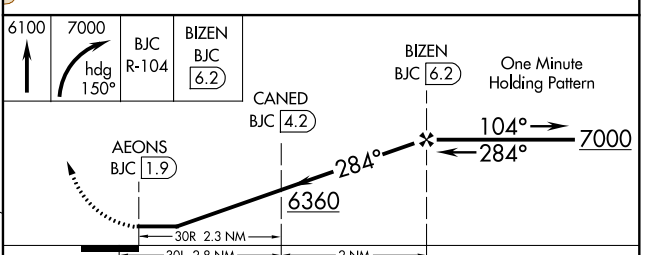
ELEV 5673	D TDZE 30L 5628
	TDZE 30R 5599



HIRL Rws 12L-30R **1**

MIRL Rws 3-21 and 12R-30L **1**

REIL Rws 12L, 12R and 30L **1**



CATEGORY	A	B	C	D
S-30R	5920-1/2 321 (300-1/2)		5920-3/4 321 (300-3/4)	
S-30L	5920-1 292 (300-1)		5920-7/8 292 (300-7/8)	
C CIRCLING	6180-1 507 (600-1)	6240-1 567 (600-1)	6360-2 687 (700-2)	6860-3 1187 (1200-3)