

| | | | |
|---|------------------------|-----------------------------|---|
| LOC/DME I-BJI 109.35 Chan 30 (Y) | APP CRS 253° | Rwy Idg TDZE Apt Elev | 5700 1389 1391 |
|---|------------------------|-----------------------------|---|

ILS or LOC RWY 25

BEMIDJI RGNL (BJI)

DME required. RADAR required for procedure entry.

NA

MISSED APPROACH: Climb to 3400 then climbing left turn to heading 185° and IDJ VOR/DME R-214 to CELIS/IDJ VOR/DME 8.1 DME and hold, continue climb-in-hold to 3400.

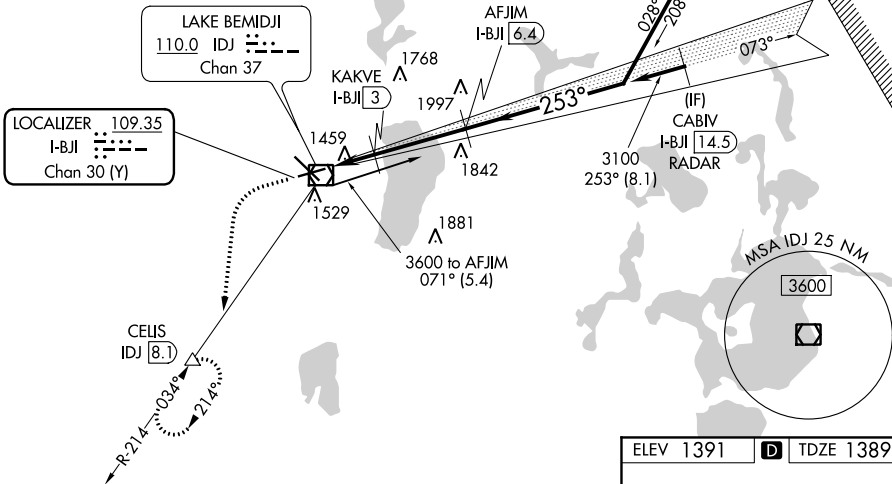
AWOS-3
119.275

MINNEAPOLIS CENTER
134.75 251.1

UNICOM
122.8 (CTAF)

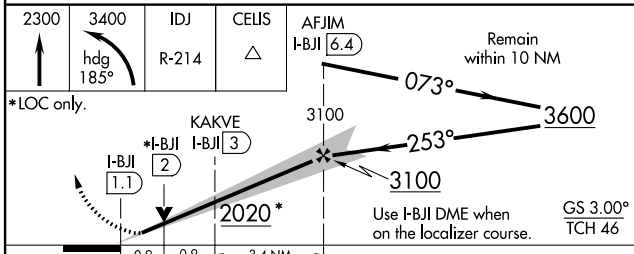
2501

BEAVER MOA

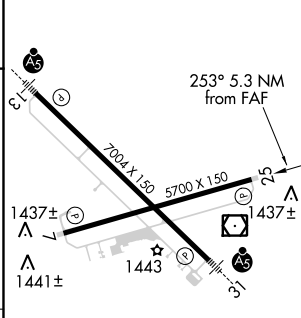


NC-1, 25 FEB 2021 to 25 MAR 2021

NC-1, 25 FEB 2021 to 25 MAR 2021



| | |
|-----------|-----------|
| ELEV 1391 | TDZE 1389 |
|-----------|-----------|



| CATEGORY | A | B | C | D |
|----------|-----------------------|-----------------------|-------------------------------|-----------------------|
| S-ILS 25 | | 1589-3/4 | 200 (200-3/4) | |
| S-LOC 25 | | 1720-1 | 331 (400-1) | |
| CIRCLING | 1840-1 449 (500-1) | 1860-1 469 (500-1) | 1860-1 1/2 469 (500-1 1/2) | 1960-2 569 (600-2) |

HIRL Rwy 13-31
MIRL Rwy 7-25
REIL Rws 7 and 25