

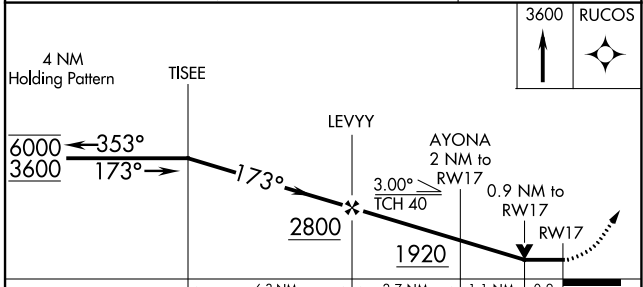
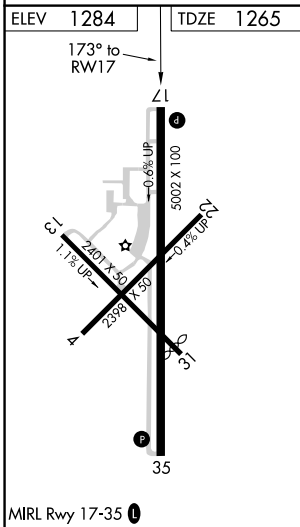
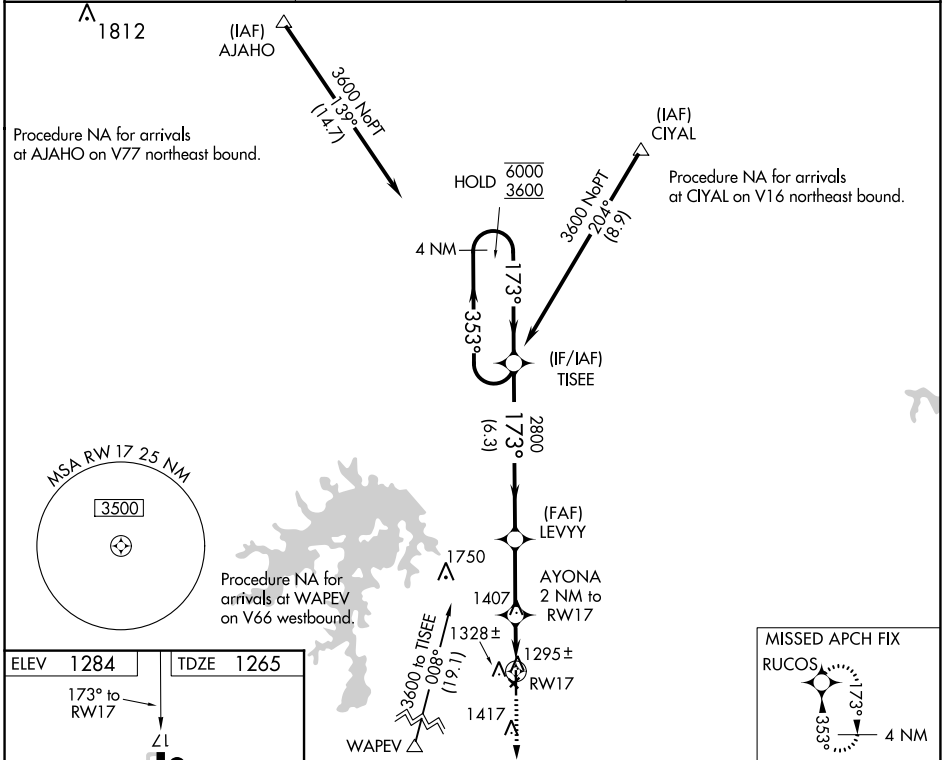
WAAS CH 65828 W17A	APP CRS 173°	Rwy Idg TDZE Apt Elev	5002 1265 1284
--	------------------------	-----------------------------	---

RNAV (GPS) RWY 17

STEPHENS COUNTY (BKD)

RNP APCH.	MISSED APPROACH: Climb to 3600 direct RUCOS and hold.
-----------	---

AWOS-3 120.175	FORT WORTH CENTER 127.0 360.6	UNICOM 122.8 (CTAF) 0
--------------------------	---	---------------------------------



CATEGORY	A	B	C	D
LP MDA	1580-1 315 (300-1)			
LNAV MDA	1700-1	435 (500-1)	1700-1¼	435 (500-1¼)

SC-2, 25 FEB 2021 to 25 MAR 2021

SC-2, 25 FEB 2021 to 25 MAR 2021