

WAAS CH 90133 W13A	APP CRS 125°	Rwy Idg TDZE Apt Elev	5085 3370 3373
----------------------------------------	------------------------	-----------------------------	-------------------------------------------

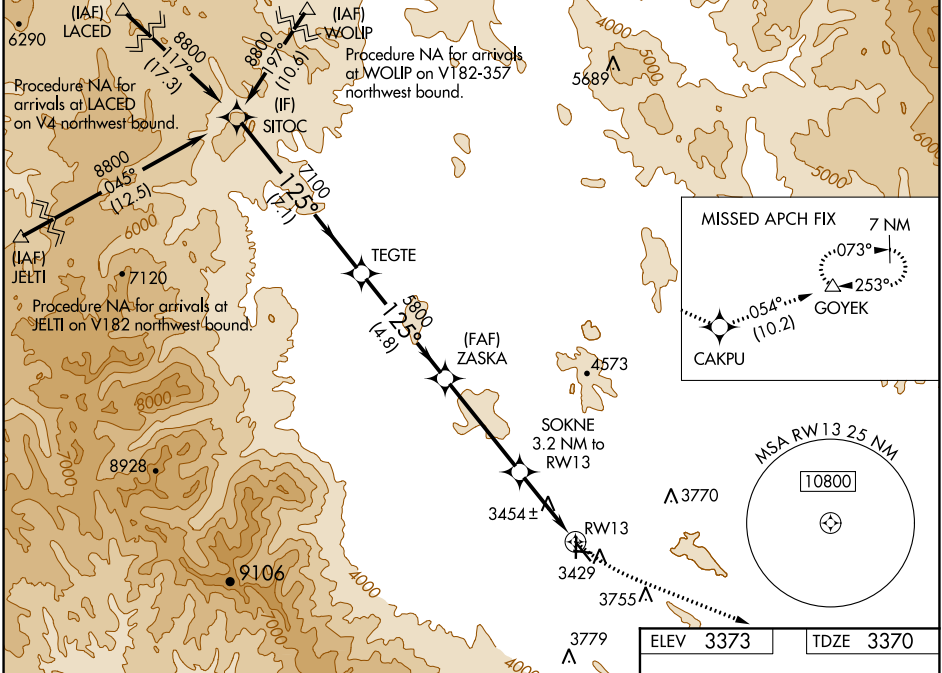
RNAV (GPS) RWY 13

BAKER CITY MUNI (BKE)

⚠ For uncompensated Baro-VNAV systems, LNAV/VNAV NA below -22°C (-7°F) or above 51°C (124°F). Rwy 13 helicopter visibility reduction below 3/4 SM NA. DME/DME RNP-0.3 NA. Circling Rwy 8, 17, 26, and 35 NA at night.

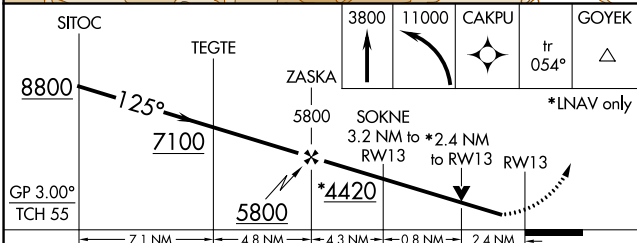
MISSED APPROACH: Climb to 3800 then climbing left turn to 11000 direct CAKPU and on track 054° to GOYEK and hold, continue climb-in-hold to 11000. # Missed approach requires minimum climb of 266 feet per NM to 4580.

ASOS 134.275	SALT LAKE CENTER 128.05 306.95	UNICOM 123.0 (CTAF)
-------------------------------	-------------------------------------------------	--------------------------------------



NW-1, 25 FEB 2021 to 25 MAR 2021

NW-1, 25 FEB 2021 to 25 MAR 2021



ELEV 3373	TDZE 3370
------------------	------------------

CATEGORY	A	B	C	D
LPV DA #		3621-3/4	251 (300-3/4)	
LPV DA		3833-1 1/2	463 (500-1 1/2)	
LNAV/VNAV DA		3916-1 7/8	546 (600-1 7/8)	
LNAV MDA	4200-1 830 (900-1)	4200-1 1/4 830 (900-1 1/4)	4200-2 1/2	830 (900-2 1/2)
C CIRCLING	4200-1 1/4	827 (900-1 1/4)	4560-3 1187 (1200-3)	4720-3 1347 (1400-3)

